

(HOBOW3.HOBOW) 22251

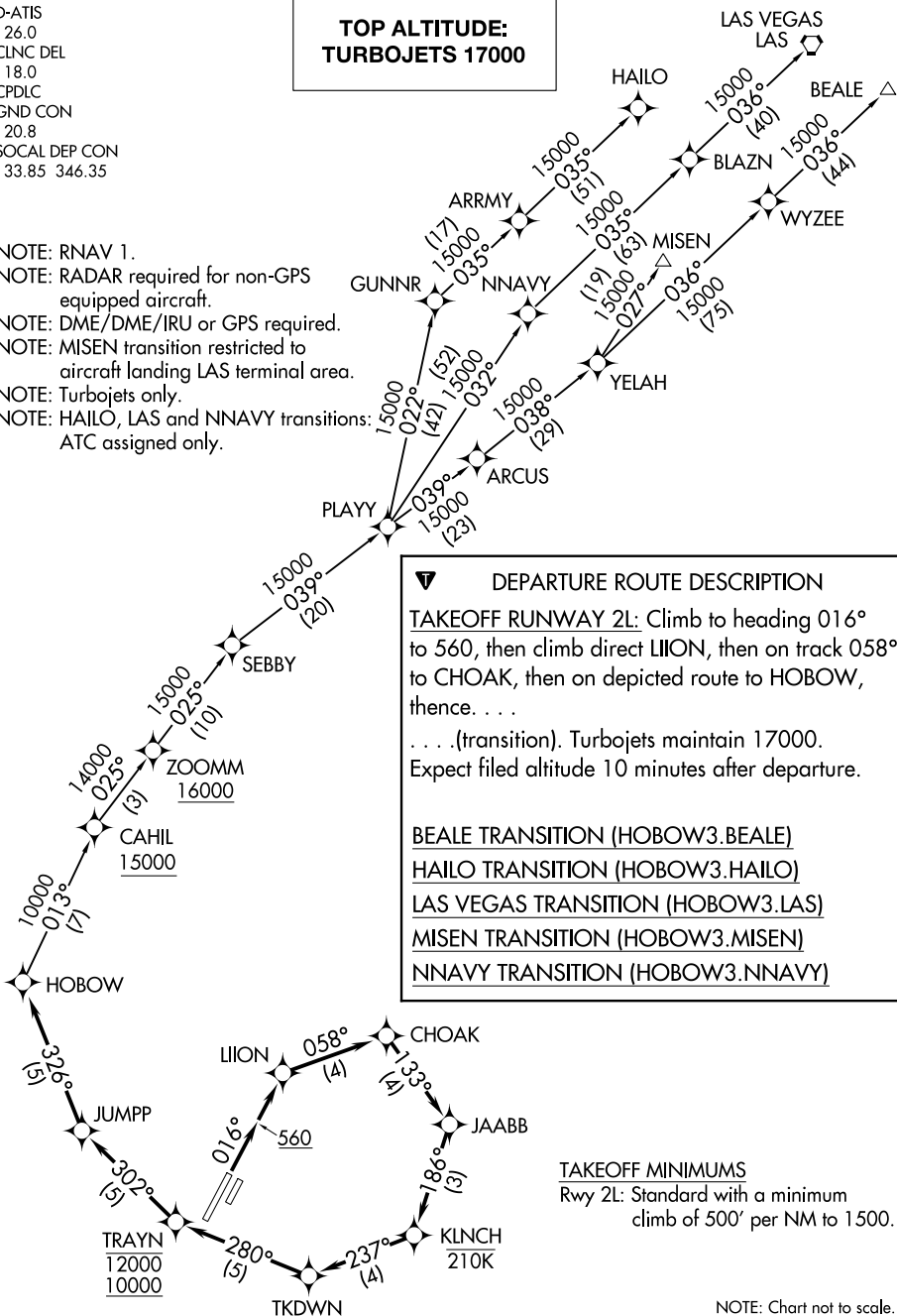
HOBOW THREE DEPARTURE (RNAV)

JOHN WAYNE/ORANGE COUNTY (SNA)
SANTA ANA, CALIFORNIA

D-ATIS
126.0
CLNC DEL
118.0
CPDLC
GND CON
120.8
SOCAL DEP CON
133.85 346.35

**TOP ALTITUDE:
TURBOJETTS 17000**

- NOTE: RNAV 1.
- NOTE: RADAR required for non-GPS equipped aircraft.
- NOTE: DME/DME/IRU or GPS required.
- NOTE: MISEN transition restricted to aircraft landing LAS terminal area.
- NOTE: Turbojets only.
- NOTE: HAILO, LAS and NNAVY transitions: ATC assigned only.



DEPARTURE ROUTE DESCRIPTION

TAKEOFF RUNWAY 2L: Climb to heading 016° to 560, then climb direct LIION, then on track 058° to CHOAK, then on depicted route to HOBOW, thence. . . .

. . . (transition). Turbojets maintain 17000. Expect filed altitude 10 minutes after departure.

BEALE TRANSITION (HOBOW3.BEALE)
HAILO TRANSITION (HOBOW3.HAILO)
LAS VEGAS TRANSITION (HOBOW3.LAS)
MISEN TRANSITION (HOBOW3.MISEN)
NNAVY TRANSITION (HOBOW3.NNAVY)

SW-3, 26 DEC 2024 to 23 JAN 2025

SW-3, 26 DEC 2024 to 23 JAN 2025

HOBOW THREE DEPARTURE (RNAV)

(HOBOW3.HOBOW) 10SEP20

SANTA ANA, CALIFORNIA
JOHN WAYNE/ORANGE COUNTY (SNA)

NOTE: Chart not to scale.