

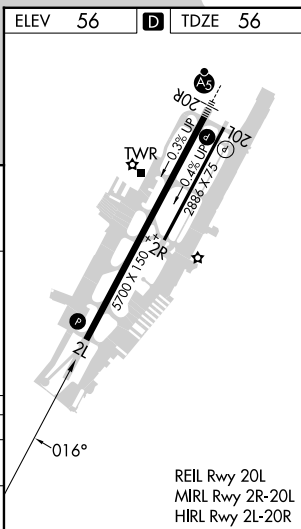
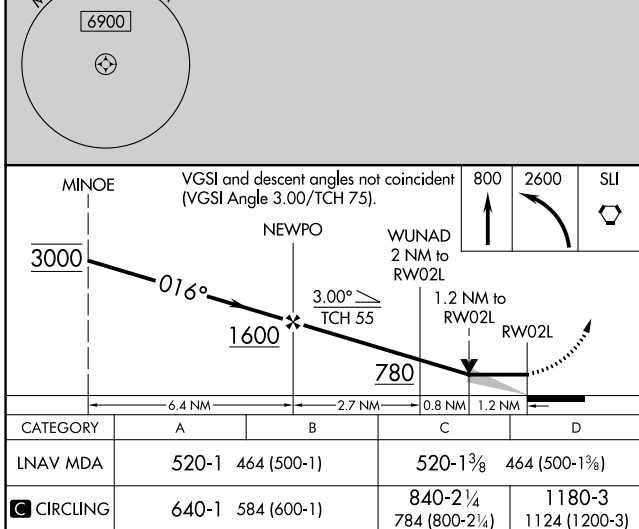
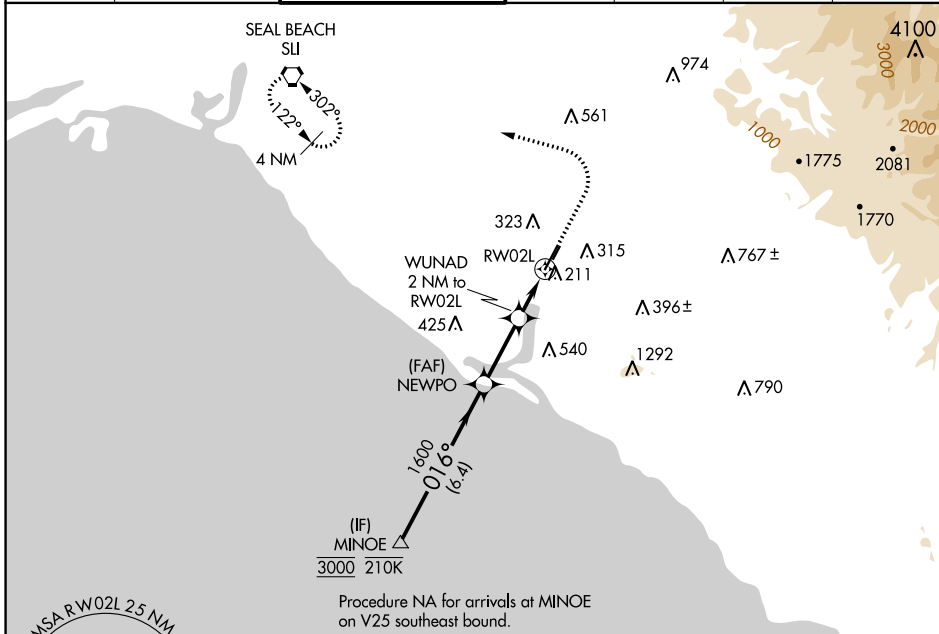
APP CRS	Rwy Idg	5700
016°	TDZE	56
	Apt Elev	56

RNAV (GPS) Y RWY 2L

JOHN WAYNE/ORANGE COUNTY (SNA)

RNP APCH - GPS.		MISSED APPROACH: Climb to 800 then climbing left turn to 2600 direct SLI VORTAC and hold.			
Circling Rwy 20L NA at night.					

D-ATIS	SOCAL APP CON	JOHN WAYNE TOWER *	GND CON	CLNC DEL	CPDLC	UNICOM
126.0	121.3 263.1	126.8 (CTAF) 0 343.625	120.8	118.0		122.95



SW-3, 26 DEC 2024 to 23 JAN 2025

SW-3, 26 DEC 2024 to 23 JAN 2025