

ATIS 132.65
CLNC DEL 132.9
GND CON 121.7
SANTA BARBARA TOWER * 119.7 (CTAF) 254.35
SANTA BARBARA DEP CON 120.55 319.15

**TOP ALTITUDE:
3000**

SHAFTER
115.4 EHF
Chan 101

GORMAN
116.1 GMN
Chan 108

LAKE HUGHES
114.35 LHS
Chan 90 (Y)

PALMDALE
115.55 PMD
Chan 102(Y)

FILLMORE
112.5 FIM
Chan 72

VAN NUYS
113.1 VNY
Chan 78

SANTA CATALINA
114.15 SXC
Chan 88(Y)

VENTURA
116.55 VTU
Chan 112(Y)

CAMARILLO
115.8 CMA
Chan 105

SAN MARCUS
114.9 RZS
Chan 96

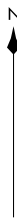
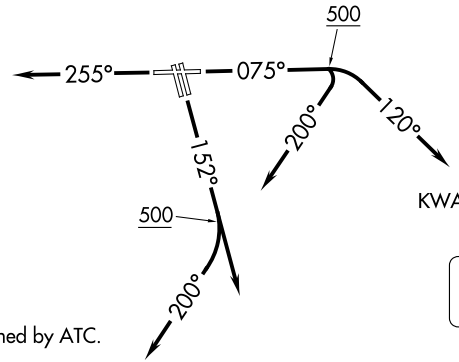
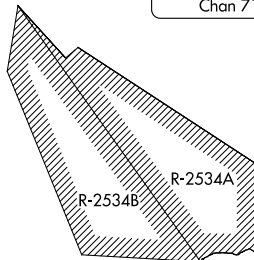
FELLOWS
117.5 FLW
Chan 122

AVENAL
117.1 AVE
Chan 118

GAVIOTA
113.8 GVO
Chan 85

MORRO BAY
112.4 MQO
Chan 71

PASO ROBLES
114.3 PRB
Chan 90



TAKEOFF MINIMUMS
Rwys 33L/R: NA-ATC.
Rwys 15L/R, 25: Standard.
Rwy 7: Standard with minimum
climb of 260' per NM to 1100.

NOTE: This DP to be used only when assigned by ATC.
NOTE: RADAR required.

NOTE: Chart not to scale.

(CONTINUED ON FOLLOWING PAGE)



DEPARTURE ROUTE DESCRIPTION

SOUTH OR EAST ROUTE OF FLIGHT:

TAKEOFF RUNWAY 7: Climb heading 075° to 500, then climbing right turn on heading 120°. Thence. . . .

TAKEOFF RUNWAYS 15L/15R: Climb heading 152°. Thence. . . .

TAKEOFF RUNWAY 25: Climb heading 255°. Thence. . . .

. . . .On RADAR vectors, maintain 3000. Expect further clearance to filed altitude 5 minutes after departure.

NORTH OR WEST ROUTE OF FLIGHT:

TAKEOFF RUNWAY 7: Climb heading 075° to 500, then climbing right turn on heading 200°. Thence. . . .

TAKEOFF RUNWAYS 15L/R: Climb heading 152° to 500, then climbing right turn on heading 200°. Thence. . . .

TAKEOFF RUNWAY 25: Climb heading 255°. Thence. . . .

. . . .On RADAR vectors, maintain 3000. Expect further clearance to filed altitude 5 minutes after departure.

SW-3, 26 DEC 2024 to 23 JAN 2025

SW-3, 26 DEC 2024 to 23 JAN 2025