

APP CRS	Rwy ldg	8004
316°	TDZE	261
	Apt Elev	261

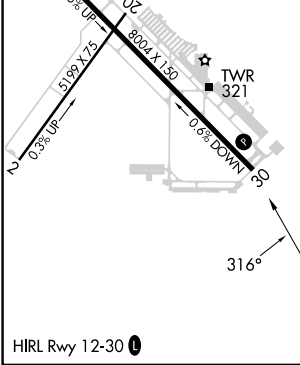
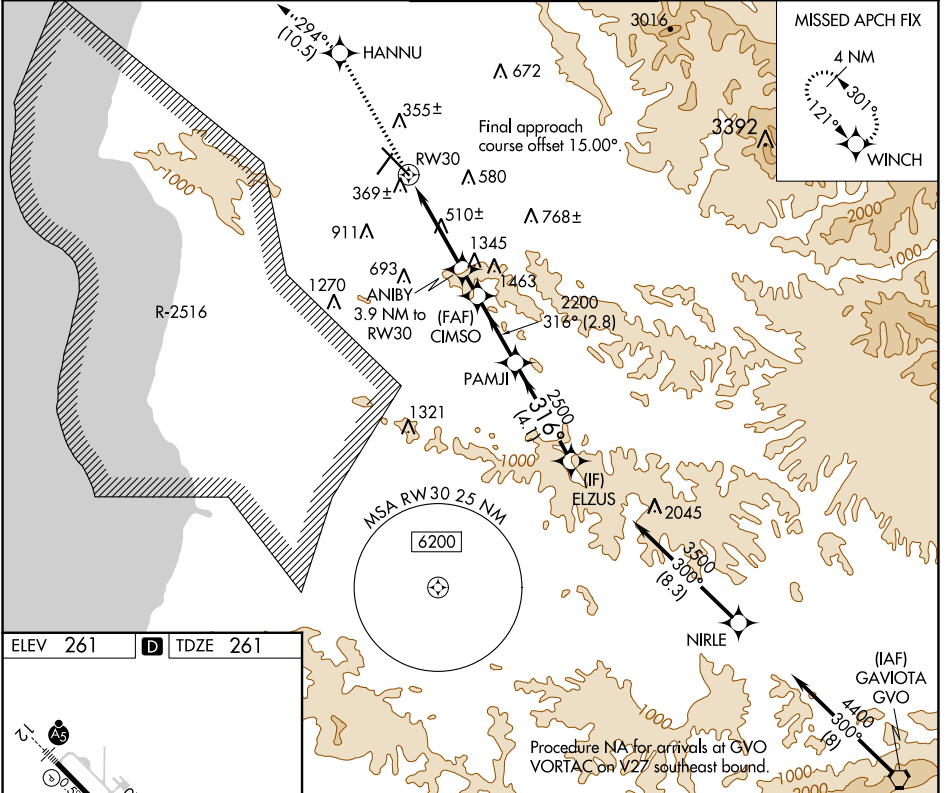
RNAV (GPS) RWY 30

SANTA MARIA PUB/CAPT G ALLAN HANCOCK FLD (SMX)

⚠ DME/DME RNP-0.3 NA. When local altimeter setting not received, use San Luis Obispo County Rgnl altimeter setting and increase all MDA 60 feet. Rwy 30 helicopter visibility reduction below 1 SM NA. Straight-in Rwy 30 NA at night, Circling Rwy 2, 30 NA at night.

MISSED APPROACH: Climb to 4000 direct HANNU and on track 294° to WINCH and hold.

ATIS 121.15	SANTA BARBARA APP CON * 124.15 327.8	SANTA MARIA TOWER * 118.3 (CTAF) 0 239.25	GND CON 121.9	UNICOM 122.95
-----------------------	------------------------------------------------	-----------------------------------------------------	-------------------------	-------------------------



ELEV 261	D	TDZE 261	Visual Segment - Obstacles.				
			HANNU ↑	WINCH tr 294°	ELZUS		
			ANIBY 3.9 NM to RW30	CIMS0	PAMJI	ELZUS	
			RW30	1780	2200	316°	3500
			3.9 NM	1.1 NM	2.8 NM	4.1 NM	
CATEGORY	A	B	C	D			
LNAV MDA	1600-1¼ 1339 (1400-1¼)	1600-1½ 1339 (1400-1½)	1600-3 1339 (1400-3)	NA			
CIRCLING	1600-1¼ 1339 (1400-1¼)	1600-1½ 1339 (1400-1½)	1600-3 1339 (1400-3)	NA			

SW-3, 26 DEC 2024 to 23 JAN 2025

SW-3, 26 DEC 2024 to 23 JAN 2025