

LOC I-TPV <b>111.9</b>	APP CRS <b>006°</b>	Rwy Idg <b>7002</b>
	TDZE <b>39</b>	
	Apt Elev <b>50</b>	

# ILS or LOC RWY 1

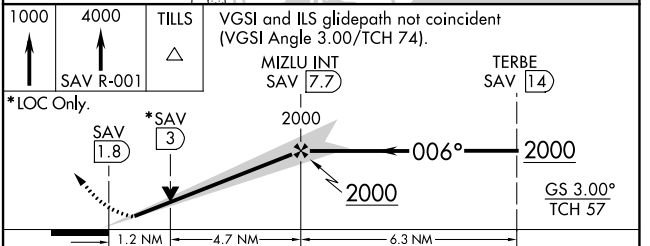
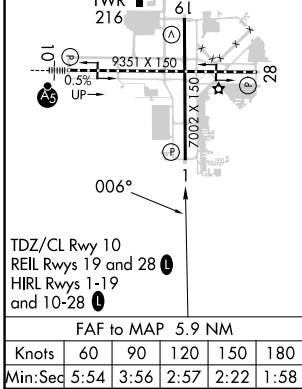
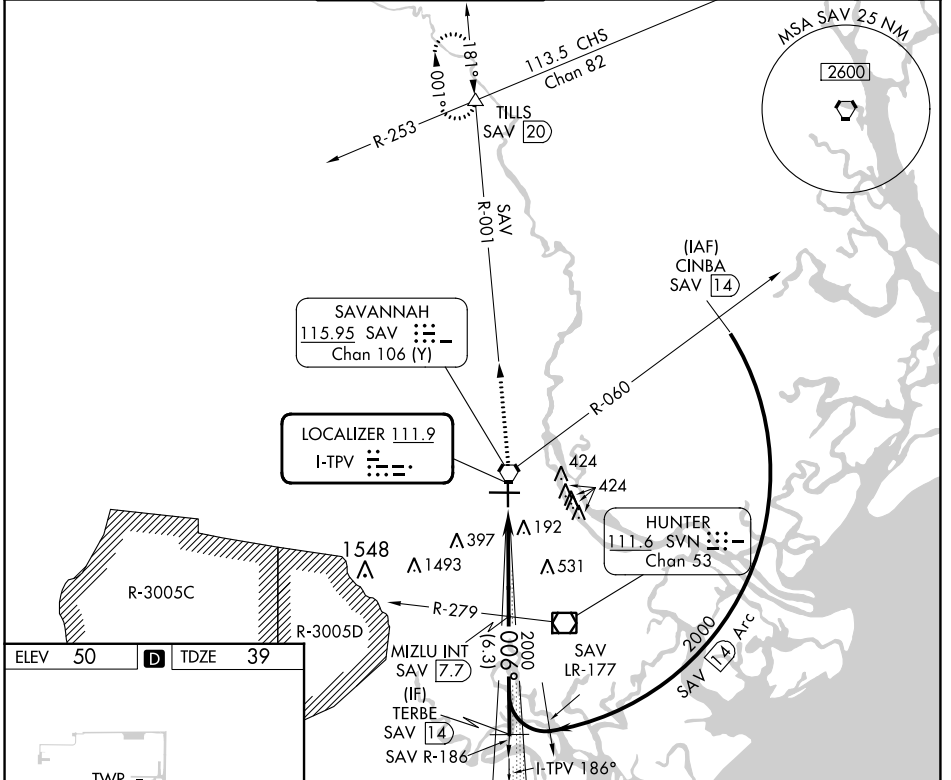
## SAVANNAH/HILTON HEAD INTL (SAV)

DME or RADAR required for procedure entry.

**▽** Autopilot coupled approach NA below 600.

**▲** MISSED APPROACH: Climb to 1000 then climb to 4000 on SAV VORTAC R-001 to TILLS INT/SAV 20 DME and hold.

ATIS <b>123.75</b>	SAVANNAH APP CON* <b>120.4 353.775</b>	SAVANNAH TOWER* <b>125.975 (CTAF) 0 257.8</b>	GND CON <b>121.9 348.6</b>	CLNC DEL <b>119.55 291.775</b>	UNICOM <b>122.95</b>
-----------------------	---	--	-------------------------------	-----------------------------------	-------------------------



CATEGORY	A	B	C	D
S-ILS 1	239/40		200 (200-¾)	
S-LOC 1	480/55	441 (500-1)	480-1⅓	441 (500-1⅓)
<input checked="" type="checkbox"/> CIRCLING	520-1	470 (500-1)	740-2 690 (700-2)	740-2¼ 690 (700-2¼)

SE-4, 26 DEC 2024 to 23 JAN 2025

SE-4, 26 DEC 2024 to 23 JAN 2025