

WAAS CH 97314 W19A	APP CRS 186°	Rwy Idg TDZE 47 Apt Elev 50	7002
----------------------------------------	------------------------	-------------------------------------------------	-------------

RNAV (GPS) RWY 19

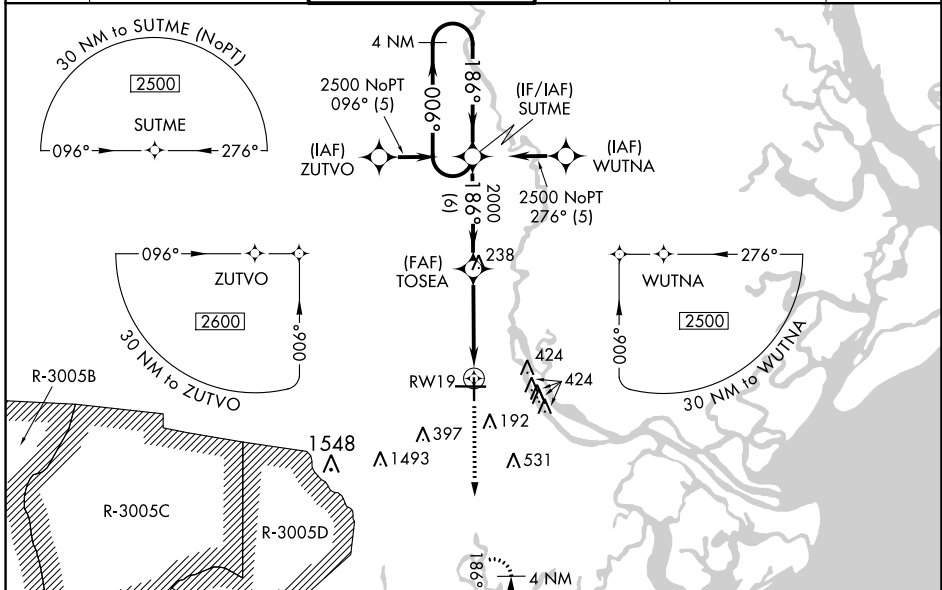
SAVANNAH/HILTON HEAD INTL (SAV)

RNP APCH-GPS.

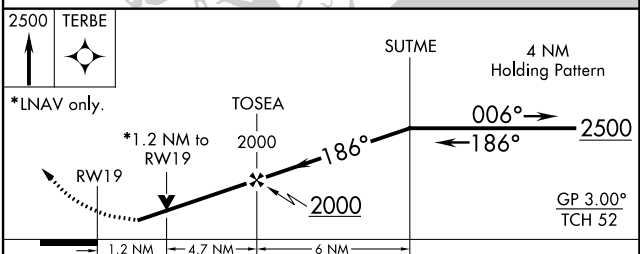
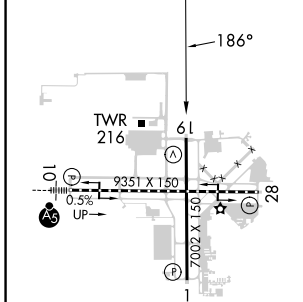
▼ For uncompensated Baro-VNAV systems, LNAV/VNAV NA below -15°C or above 54°C.
 ▲ When local altimeter setting not received, use Hilton Head Island altimeter setting and increase LPV DA to 378 feet; increase LNAV/VNAV DA to 532 feet and all visibilities ¼ SM; increase all MDAs 80 feet and LNAV visibility Cat C/D ½ SM, and Circling visibility Cat C/D ¼ SM. VDP and Baro-VNAV NA when using Hilton Head Island altimeter setting.

MISSED APPROACH: Climb to 2500 direct TERBE and hold.

ATIS 123.75	SAVANNAH APP CON * 125.3 371.875	SAVANNAH TOWER * 125.975 (CTAF) 257.8	GND CON 121.9 348.6	CLNC DEL 119.55 291.775	UNICOM 122.95
-----------------------	--------------------------------------------	-------------------------------------------------	-------------------------------	-----------------------------------	-------------------------



ELEV 50	D	TDZE 47
---------	----------	---------



CATEGORY	A	B	C	D
LPV DA	312-1 265 (300-1)			
LNAV/VNAV DA	466-1½ 419 (500-1½)			
LNAV MDA	480-1	433 (500-1)	480-1¼ 433 (500-1¼)	480-1½ 433 (500-1½)
C CIRCLING	520-1	470 (500-1)	740-2 690 (700-2)	740-2¼ 690 (700-2¼)

TDZ/CL Rwy 10
 REIL Rwy 19 and 28
 HIRL Rwy 1-19 and 10-28

SE-4, 26 DEC 2024 to 23 JAN 2025

SE-4, 26 DEC 2024 to 23 JAN 2025