

VORTAC SAV <b>115.95</b> Chan <b>106</b> (Y)	APP CRS <b>024°</b>	Rwy Idg TDZE Apt Elev	<b>N/A</b> <b>N/A</b> <b>50</b>
--	------------------------	-----------------------------	---------------------------------------

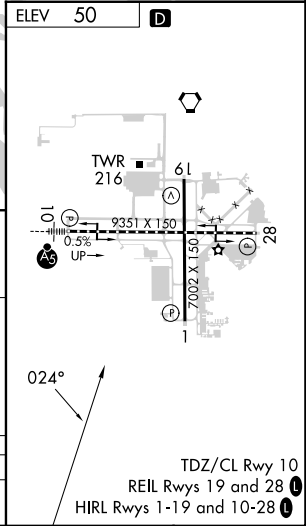
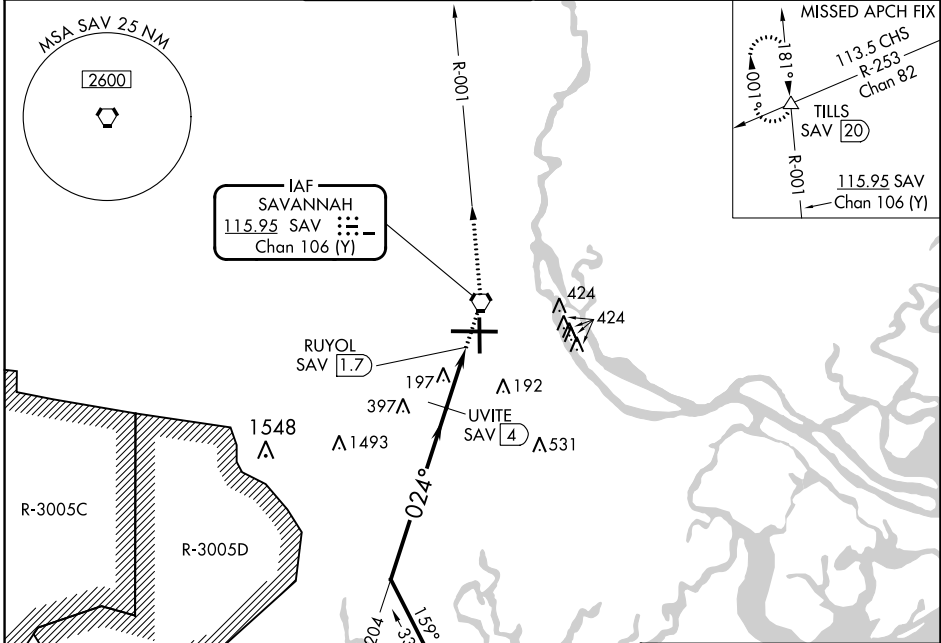
# VOR/DME-A

SAVANNAH/HILTON HEAD INTL (SAV)

⚠ When local altimeter setting not received, use Hilton Head Island altimeter setting and increase all MDA 80 feet; increase Circling Cats C/D visibility ¼ SM.

MISSED APPROACH: Climb to 4000 direct SAV VORTAC and SAV R-001 to TILLS INT/SAV 20 DME and hold.

ATIS <b>123.75</b>	SAVANNAH APP CON* <b>120.4 353.775</b>	SAVANNAH TOWER* <b>125.975</b> (CTAF) <b>0 257.8</b>	GND CON <b>121.9 348.6</b>	CLNC DEL <b>119.55 291.775</b>	UNICOM <b>122.95</b>
-----------------------	---	---	-------------------------------	-----------------------------------	-------------------------



	SAV VORTAC	4000	SAV	SAV R-001	TILLS
		↑	⬡	⬡	△
CATEGORY	A	B	C	D	E
CIRCLING	520-1	470 (500-1)	740-2 690 (700-2)	740-2¼ 690 (700-2¼)	900-3 850 (900-3)

SE-4, 26 DEC 2024 to 23 JAN 2025

SE-4, 26 DEC 2024 to 23 JAN 2025