

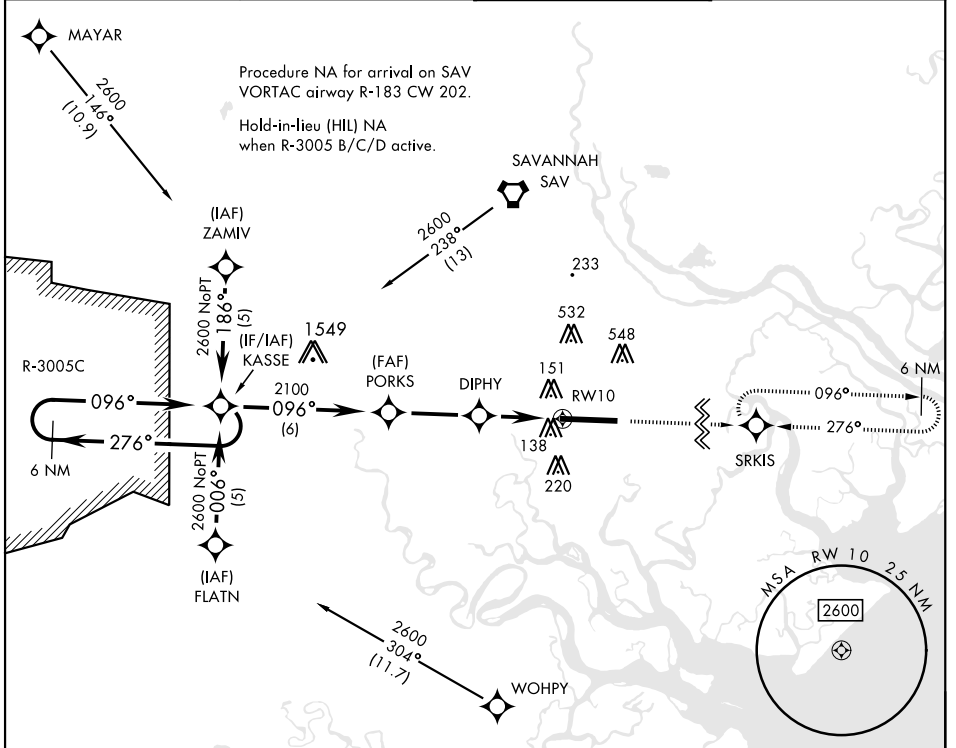
# RNAV (GPS) RWY 10

APCH CRS	Rwy Idg	11,393
096°	TDZE	26
	Arprt Elev	41

[USA]

HUNTER AAF (KSVN)

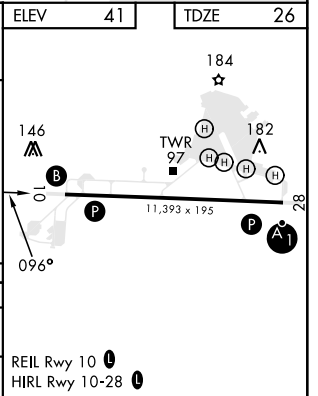
RNP APCH-GPS			MISSED APPROACH: Climb to 2500 direct SRKIS and hold.
RADAR required when R-3005 B/C/D active.			
*When ALS inop, increase CAT AB vis to 1 mile; CAT CD vis to 1/4 miles. **Circling not authorized N of Rwy 10-28 for CAT D.			
ATIS ★ <b>127.525 323.125</b>	SAVANNAH APP CON ★ <b>120.4 353.775</b>	TOWER ★ <b>124.975 (CTAF) 0 279.575</b>	GND CON ★ <b>121.8 291.675</b>



SE-4, 26 DEC 2024 to 23 JAN 2025

SE-4, 26 DEC 2024 to 23 JAN 2025

2500 		SRKIS 		ELEV	41	TDZE	26
CATEGORY	A	B	C	D			
LNAV MDA*	460-1	434	(500-1)				
CIRCLING**	600-1	559 (600-1)	920-2½ 879 (900-2½)	920-2¾ 879 (900-2¾)			



# RNAV (GPS) RWY 10