

WAAS CH 93506 W05A	APP CRS 061°	Rwy Idg TDZE Apt Elev	8002 3952 3967
--	------------------------	-----------------------------	---

RNAV (GPS) RWY 5

SCOTTSBLUFF/WESTERN NEBRASKA RGNL/WM B HEILIG FLD (BFF)

RNP APCH.

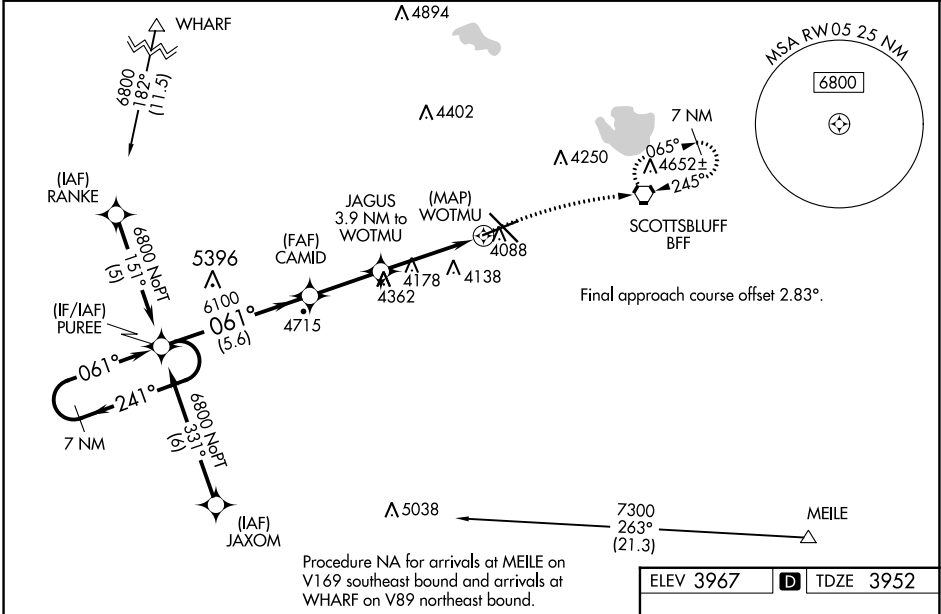
⚠ Baro-VNAV NA when using Alliance altimeter setting. For uncompensated Baro-VNAV systems, LNAV/VNAV NA below -22°C (-7°F) or above 51°C (124°F). When local altimeter setting not received, use Alliance altimeter setting and increase all DA 91 feet and all MDA 100 feet; increase LPV all Cats visibility 3/8 mile, LNAV/VNAV all Cats visibility 1/4 mile, LNAV Cats C/D visibility 1/4 mile, Circling Cat C visibility 1/2 mile and Cat D visibility 1/4 mile.

MISSED APPROACH:
Climb to 4400 then climbing right turn to 6900 direct BFF VORTAC and hold, continue climb-in-hold to 6900.

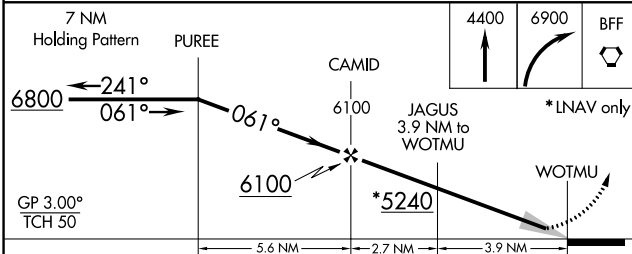
ASOS
121.025

DENVER CENTER
127.95 338.2

UNICOM
123.0 (CTAF) 0

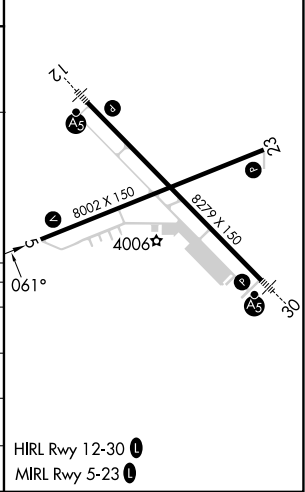


Procedure NA for arrivals at MEILE on V169 southeast bound and arrivals at WHARF on V89 northeast bound.



CATEGORY	A	B	C	D
LPV DA		4202-1	250 (300-1)	
LNAV/VNAV DA		4418-1½	466 (500-1½)	
LNAV MDA	4480-1	528 (600-1)	4480-1½	528 (600-1½)
C CIRCLING	4500-1	533 (600-1)	4560-1½ 593 (600-1½)	4720-2½ 753 (800-2½)

ELEV 3967 **D** TDZE 3952



HIRL Rwy 12-30 **0**
MIRL Rwy 5-23 **0**

NC-2, 26 DEC 2024 to 23 JAN 2025

NC-2, 26 DEC 2024 to 23 JAN 2025