

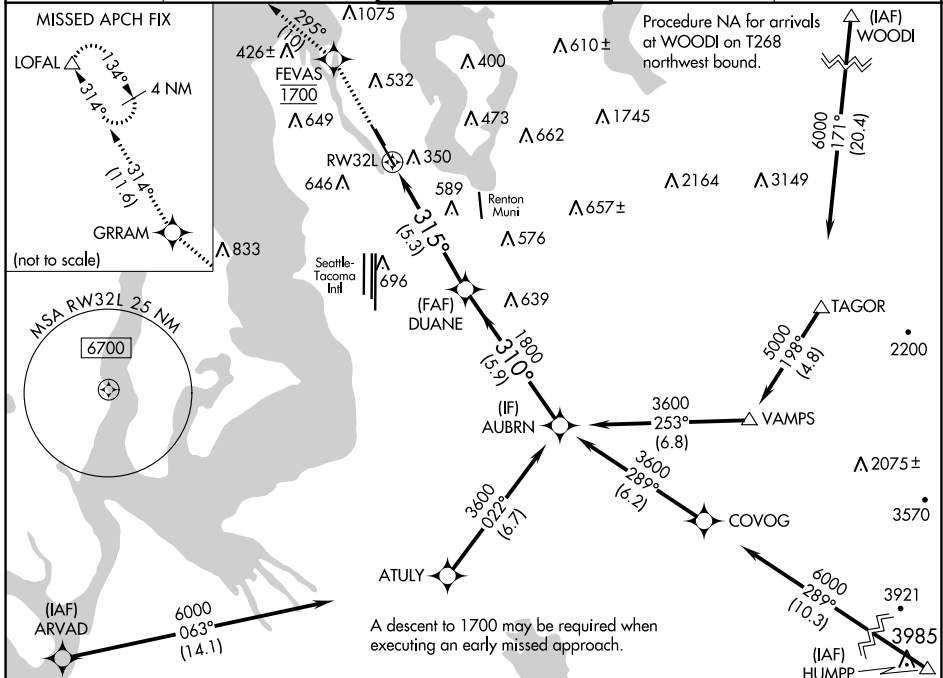
APP CRS	Rwy Idg	9120
315°	TDZE	22
	Apt Elev	22

RNAV (RNP) Z RWY 32L

BOEING FLD/KING COUNTY INTL (BFI)

RNP AR APCH - GPS.	MISSED APPROACH: Climb direct FEVAS, cross FEVAS at 1700, then climb to 3000 on the RNAV missed approach route to LOFAL and hold.
RADAR required for missed approach.	
<p>▼ For uncompensated Baro-VNAV systems, procedure NA below -6°C or above 54°C.</p> <p>▲</p>	

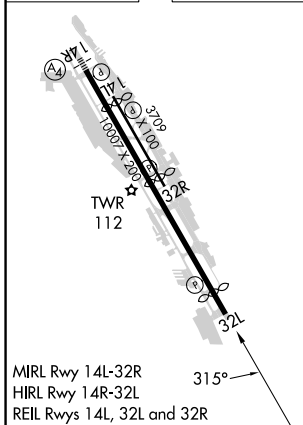
ATIS 127.75	SEATTLE APP CON 125.9 306.9	BOEING TOWER 120.6 257.8	GND CON 121.9	CLNC DEL 132.4
-----------------------	---------------------------------------	------------------------------------	-------------------------	--------------------------



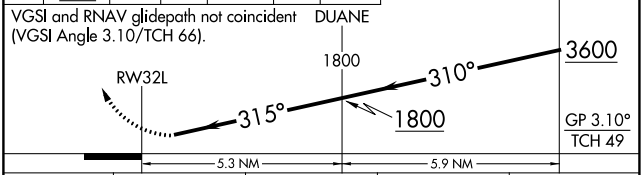
NW-1, 26 DEC 2024 to 23 JAN 2025

NW-1, 26 DEC 2024 to 23 JAN 2025

ELEV 22	D	TDZE 22
---------	----------	---------



↑ FEVAS 1700	3000	tr 295°	GRRAM	tr 314°	LOFAL	AUBRN
-----------------	------	---------	-------	---------	-------	-------



CATEGORY	A	B	C	D
RNP 0.10 DA		567-1 $\frac{1}{8}$	545 (600-1 $\frac{1}{8}$)	
RNP 0.15 DA		681-1 $\frac{1}{8}$	659 (700-1 $\frac{1}{8}$)	
RNP 0.30 DA		836-2 $\frac{1}{2}$	814 (900-2 $\frac{1}{2}$)	

AUTHORIZATION REQUIRED