

| | | |
|--|------------------------|---|
| WAAS CH 40311 W01A | APP CRS 005° | Rwy Idg 5234 TDZE 62 Apt Elev 62 |
|--|------------------------|---|

RNAV (GPS) RWY 1

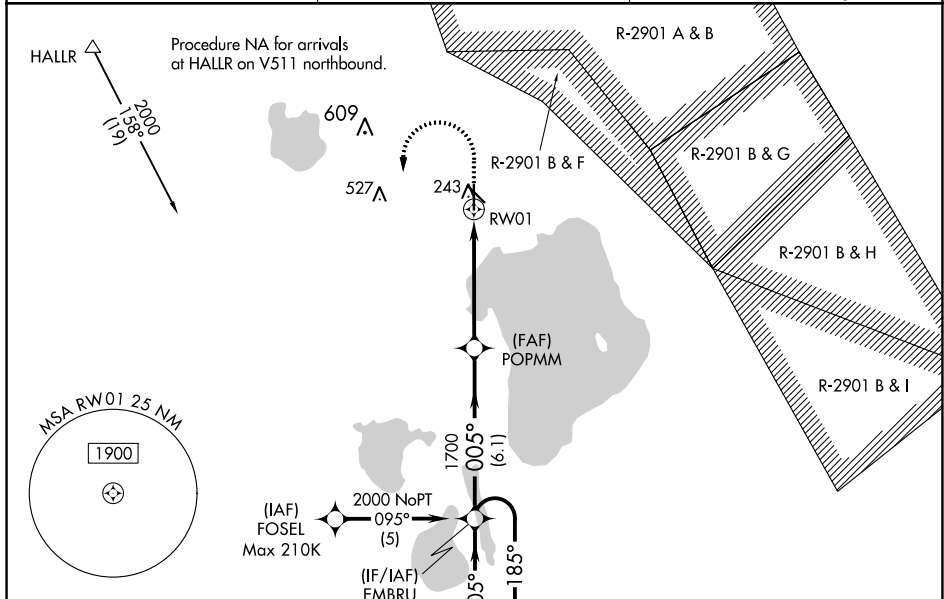
SEBRING RGNL (SEIF)

RNP APCH-GPS

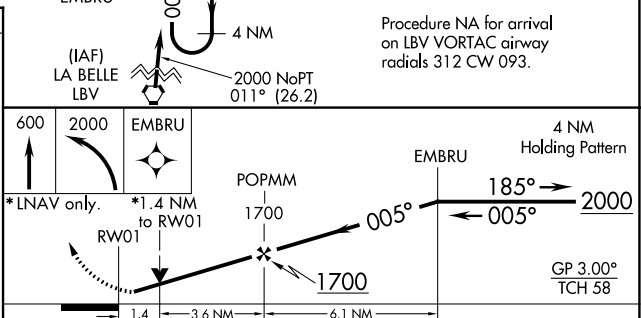
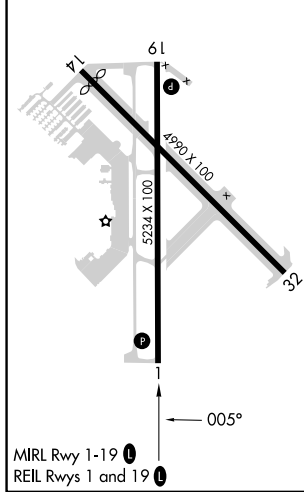
NA For uncompensated Baro-VNAV systems, LNAV/VNAV NA below -15°C or above 54°C. When local altimeter setting not received, use Vero Beach Muni altimeter setting; increase LPV DA to 503 feet and all visibilities ½ SM, increase LNAV/VNAV DA to 530 feet and all visibilities ¾ SM; increase all MDAs 140 feet and LNAV visibility Cats C and D ¾ SM, increase Circling visibility Cat C ½ SM and visibility Cat D ¼ SM. Circling Rwy 14 NA at night. VDP and Baro-VNAV NA when using Vero Beach altimeter. Rwy 1 helicopter visibility reduction below ¾ SM NA.

MISSED APPROACH:
Climb to 600 then climbing left turn to 2000 direct EMBRU and hold.

| | | |
|--------------------------|-------------------------------------|-------------------------------|
| AWOS-3 119.475 | MIAMI CENTER 134.55 257.7 | UNICOM 122.7 (CTAF) |
|--------------------------|-------------------------------------|-------------------------------|



| | |
|---------|---------|
| ELEV 62 | TDZE 62 |
|---------|---------|



| CATEGORY | A | B | C | D |
|--------------|---------------------|---|--|---|
| LPV DA | 381-1 319 (400-1) | | | |
| LNAV/VNAV DA | 408-1½ 346 (400-1½) | | | |
| LNAV MDA | 540-1 478 (500-1) | | 540-1¾ 478 (500-1¾) | |
| CIRCLING | 600-1 538 (600-1) | | 600-1½ 880-2¾ 538 (600-1½) 818 (900-2¾) | |

SE-3, 26 DEC 2024 to 23 JAN 2025

SE-3, 26 DEC 2024 to 23 JAN 2025