

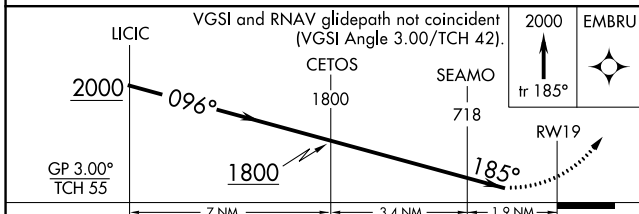
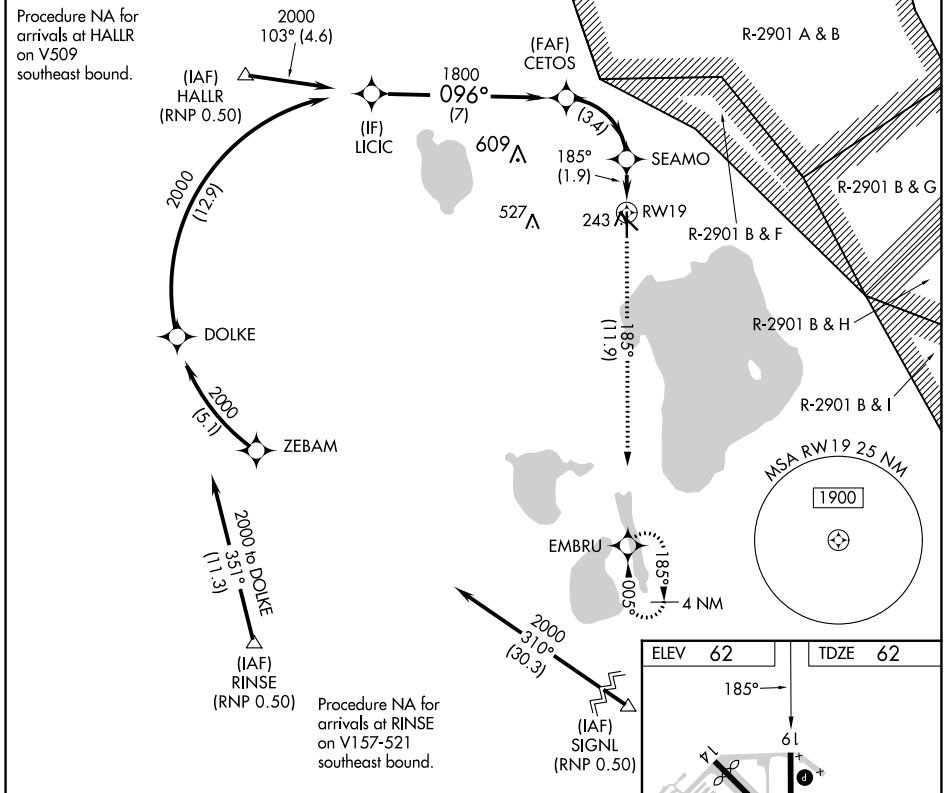
APP CRS	Rwy ldg	5234
185°	TDZE	62
	Apt Elev	62

RNAV (RNP) RWY 19

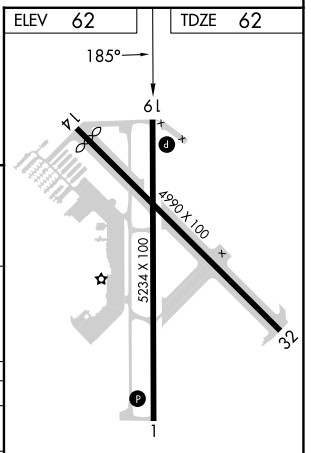
SEBRING RGNL (SEF)

RNP AR APCH GPS.	MISSED APPROACH: Climb to 2000 on track 185° to EMBRU and hold.
<p>▼ For uncompensated Baro-VNAV systems, procedure NA below -15°C or above 54°C.</p> <p>▲ NA</p>	

AWOS-3 119.475	MIAMI CENTER 134.55 257.7	UNICOM 122.7 (CTAF) 0
--------------------------	-------------------------------------	---------------------------------



CATEGORY	A	B	C	D
RNP 0.30 DA	440-1¼ 378 (400-1¼)			



AUTHORIZATION REQUIRED

MIRL Rwy 1-19 0
REIL Rwy 1 and 19 0

SE-3, 26 DEC 2024 to 23 JAN 2025

SE-3, 26 DEC 2024 to 23 JAN 2025