

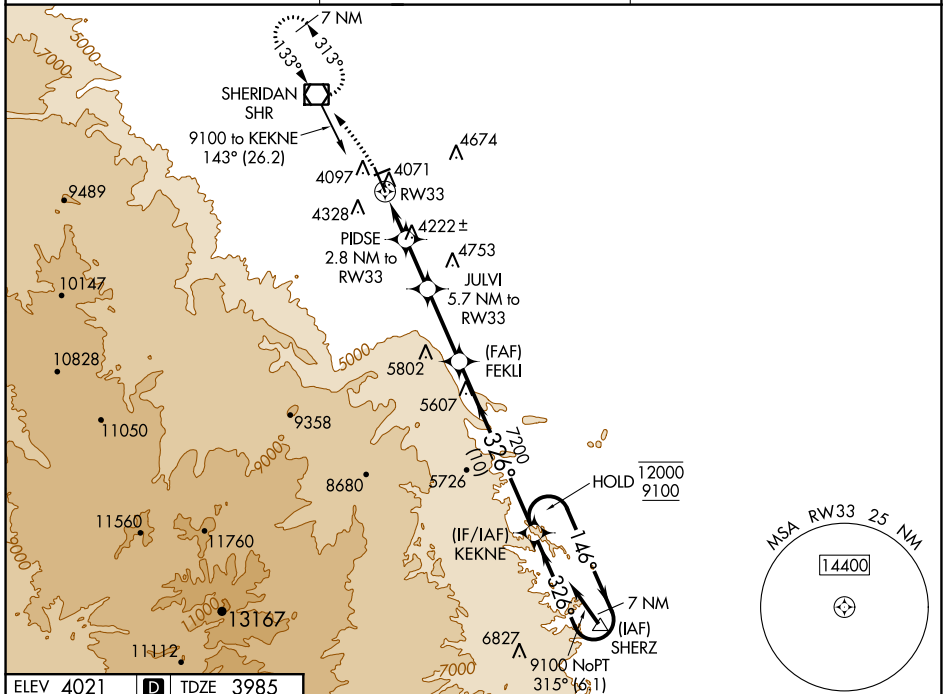
WAAS CH 65699 W33A	APP CRS 326°	Rwy Idg TDZE Apt Elev 8301 3985 4021
--	------------------------	--

RNAV (GPS) RWY 33

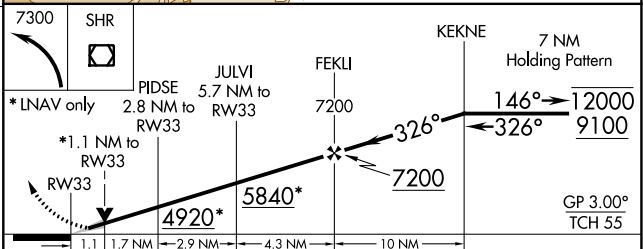
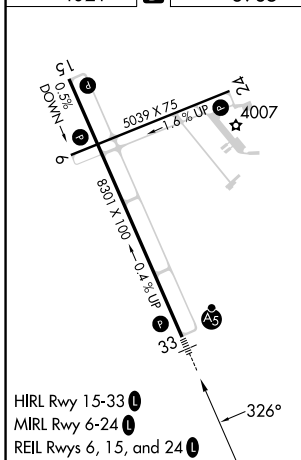
SHERIDAN COUNTY (SHR)

RNP APCH.	MALSR	MISSED APPROACH: Climbing left turn to 7300 direct SHR VOR/DME and hold, continue climb-in-hold to 7300.
Circling to Rwy 24 NA at night. Baro-VNAV NA. When local altimeter setting not received, procedure NA. -19°C		

ASOS 135.175	SALT LAKE CENTER 127.75 351.9	UNICOM 123.0 (CTAF)
------------------------	---	-------------------------------



ELEV 4021		TDZE 3985
-----------	--	-----------



CATEGORY	A	B	C	D
LPV DA		4205- $\frac{1}{2}$	220 (200- $\frac{1}{2}$)	
LNAV/VNAV DA		4380- $\frac{3}{4}$	395 (400- $\frac{3}{4}$)	
LNAV MDA	4380- $\frac{1}{2}$	395 (400- $\frac{1}{2}$)	4380- $\frac{5}{8}$	395 (400- $\frac{5}{8}$)
CIRCLING	4600-1 579 (600-1)	4640-1 619 (700-1)	4860-2 $\frac{1}{2}$ 839 (900-2 $\frac{1}{2}$)	5220-3 1199 (1200-3)

NW-1, 26 DEC 2024 to 23 JAN 2025

NW-1, 26 DEC 2024 to 23 JAN 2025