

VOR/DME SHR	APP CRS	Rwy Idg	8301
113.55	131°	TDZE	4014
Chan 82(Y)		Apt Elev	4021

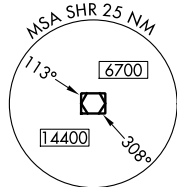
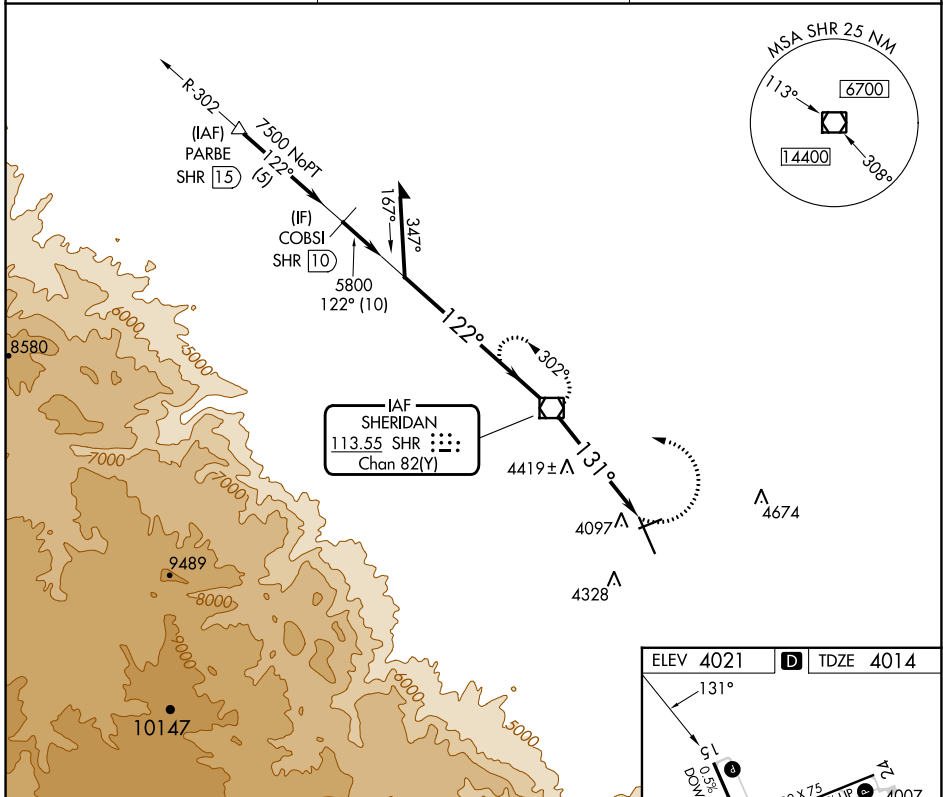
VOR RWY 15

SHERIDAN COUNTY (SHR)

When local altimeter setting not received, procedure NA. Night landing: Rwy 24 NA.

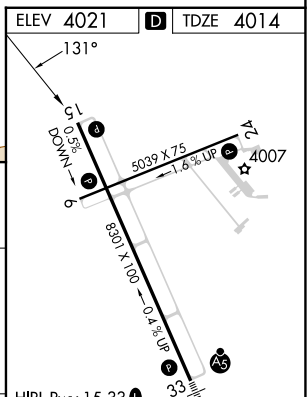
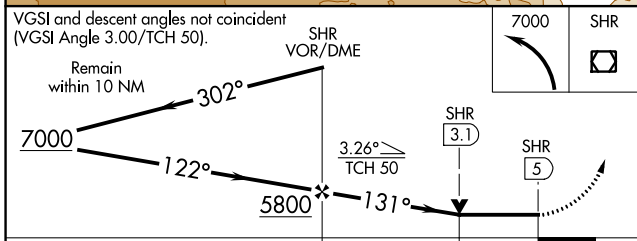
MISSED APPROACH: Climbing left turn to 7000 direct SHR VOR/DME and hold, continue climb-in-hold to 7000.

ASOS 135,175	SALT LAKE CENTER 127.75 351.9	UNICOM 123.0 (CTAF) 1
------------------------	---	---------------------------------



NW-1, 26 DEC 2024 to 23 JAN 2025

NW-1, 26 DEC 2024 to 23 JAN 2025



CATEGORY	A	B	C	D
S-15	4680-1 666 (700-1)		4680-1 666 (700-1)	
CIRCLING	4680-1 659 (700-1)		4860-2 1/2 839 (900-2 1/2)	5220-3 1199 (1200-3)

FAF to MAP 5 NM					
Knots	60	90	120	150	180
Min:Sec	5:00	3:20	2:30	2:00	1:40