



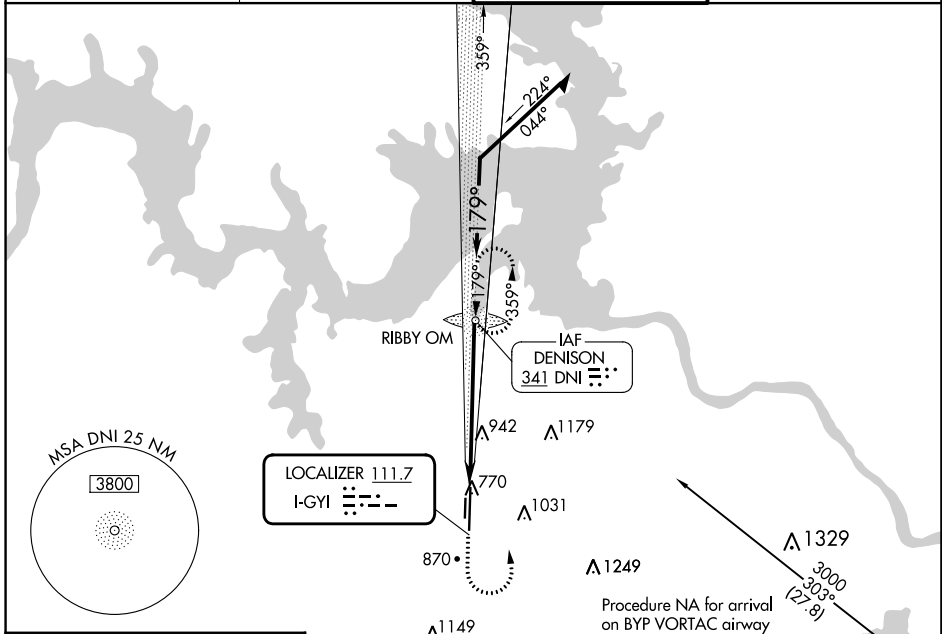
LOC I-GYI <b>111.7</b>	APP CRS <b>179°</b>	Rwy Idg <b>9000</b>
		TDZE <b>741</b>
		Apt Elev <b>749</b>

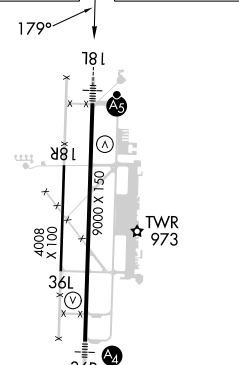
# ILS or LOC RWY 18L

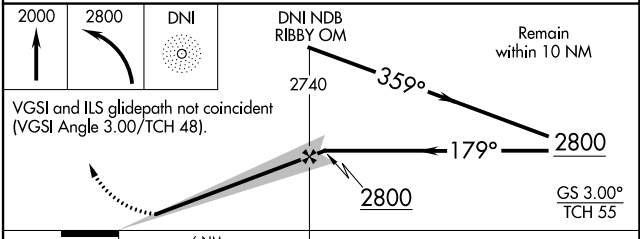
NORTH TEXAS RGNL/PERRIN FLD (GYI)

ADF required.	MALSR 	MISSED APPROACH: Climb to 2000 then climbing left turn to 2800 direct DNI NDB and hold.
 Circling Rwy 18R, 36L NA at night. Autopilot coupled approach NA below 1900. For inop ALS, increase S-LOC-18L Cat C/D visibility to 1 3/8 SM.		

ATIS <b>118.775</b>	FORT WORTH CENTER <b>124.75 323.0</b>	NORTH TEXAS TOWER ★ <b>120.575 (CTAF) 233.7</b>	GND CON <b>124.125</b>
------------------------	--	--	---------------------------



ELEV <b>749</b>	TDZE <b>741</b>
	



CATEGORY	A	B	C	D
S-ILS 18L	941-1/2		200 (200-1/2)	
S-LOC 18L	1220-1/2	479 (500-1/2)	1220-1	479 (500-1)
<input checked="" type="checkbox"/> CIRCLING	1300-1	551 (600-1)	1400-1 3/4 651 (700-1 3/4)	1540-2 1/2 791 (800-2 1/2)