

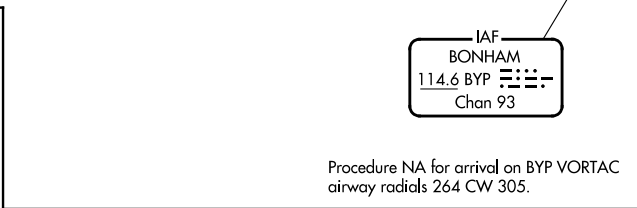
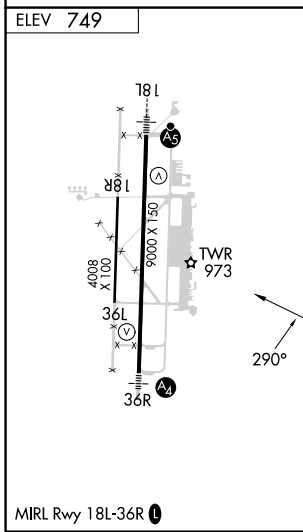
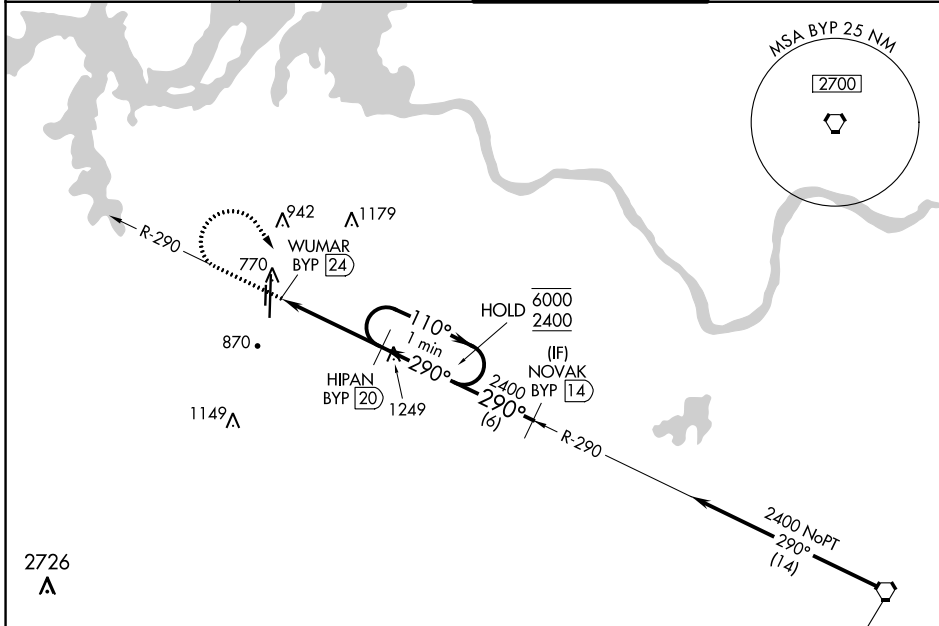
VORTAC BYP 114.6 Chan 93	APP CRS 290°	Rwy Idg TDZE Apt Elev	N/A N/A 749
--	------------------------	-----------------------------	--

VOR-A

NORTH TEXAS RGNL/PERRIN FLD (GYI)

DME required.		MISSED APPROACH: Climb to 2000 then climbing right turn to 2400 on heading 140° and BYP VORTAC R-290 to HIPAN/20 DME and hold.
Circling Rwy 18R, 36L NA at night.		

ATIS 118.775	FORT WORTH CENTER 124.75 323.0	NORTH TEXAS TOWER ★ 120.575 (CTAF) 233.7	GND CON 124.125
------------------------	--	---	---------------------------



2000	2400	BYP R-290	HIPAN BYP (20)	HIPAN BYP (20)	One Minute Holding Pattern
↑	hdg 140°				
		WUMAR BYP (24)	2400	110° → 6000	← 290° 2400
4 NM					

CATEGORY	A	B	C	D
CIRCLING	1340-1	591 (600-1)	1400-1¾ 651 (700-1¾)	1540-2½ 791 (800-2½)

VOR-A

SC-2, 26 DEC 2024 to 23 JAN 2025

SC-2, 26 DEC 2024 to 23 JAN 2025