

WAAS CH 66003 W13A	APP CRS 135°	Rwy Idg 5022 TDZE 3273 Apt Elev 3275
--	------------------------	---

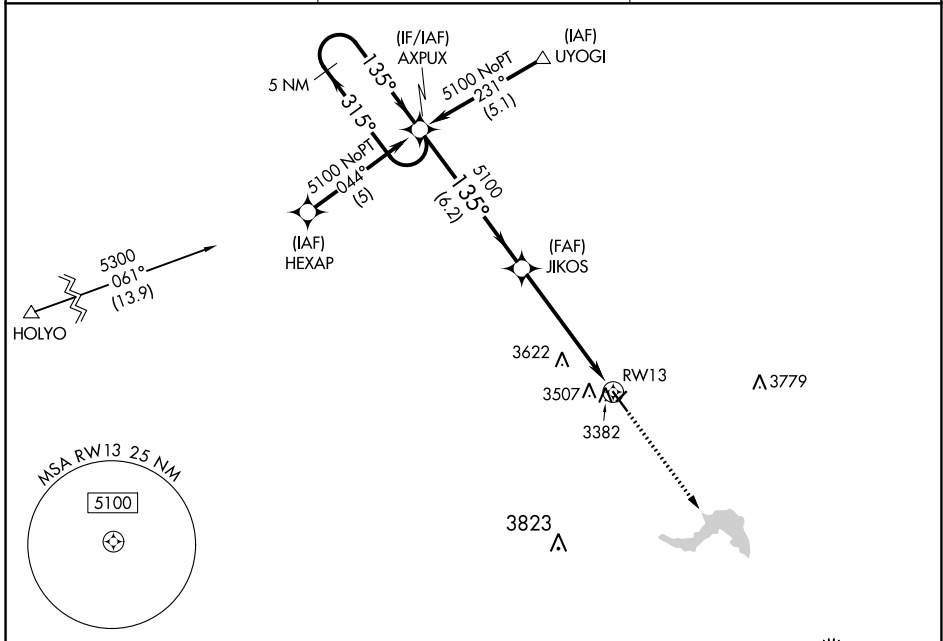
RNAV (GPS) RWY 13

IMPERIAL MUNI (IML)

⚠ For uncompensated Baro-VNAV systems, LNAV/VNAV NA below -21°C (-5°F) or above 54°C (130°F). DME/DME RNP-0.3 NA. Helicopter visibility reduction below ¾ SM NA. If local altimeter setting not received, use Ogallala altimeter setting and increase all DAs 86 feet and all MDAs 100 feet. VDP and Baro-VNAV NA when using Ogallala altimeter setting. Circling NA to Rwy 3 and 21.

MISSED APPROACH: Climb to 5000 direct AQIMU and hold.

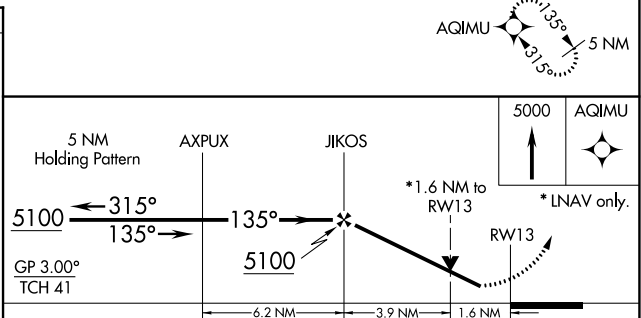
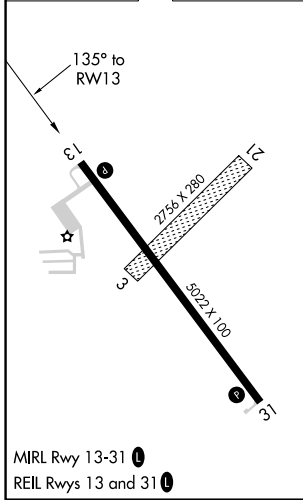
ASOS 124.175	DENVER CENTER 132.7 397.85	UNICOM 122.8 (CTAF) 0
------------------------	--------------------------------------	---------------------------------



NC-2, 26 DEC 2024 to 23 JAN 2025

NC-2, 26 DEC 2024 to 23 JAN 2025

ELEV 3275	TDZE 3273
------------------	------------------



CATEGORY	A	B	C	D
LPV DA	3548-1	275 (300-1)		NA
LNAV/VNAV DA	3752-1¾	479 (500-1¾)		NA
LNAV MDA	3820-1	547 (600-1)		NA
CIRCLING	3860-1	585 (600-1)		NA