

HI-ILS or LOC Y RWY 33

LOC I-BAD 109.9	APCH CRS 329°	Rwy ldg 11,758 THRE 161 Arprt Elev 165
---------------------------	-------------------------	---

[USAF]

BARKSDALE AFB (KBAD)

DME or RADAR required



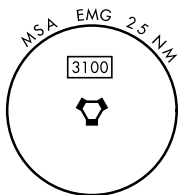
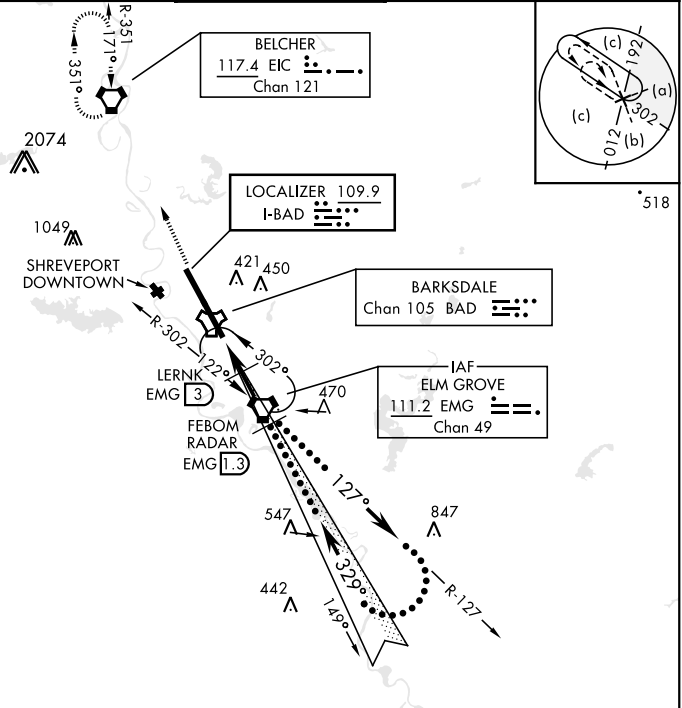
MISSED APPROACH: Climb to 3100 direct to EIC VORTAC and hold.

* When ALS inop, increase CAT CDE RVR to 40 and vis to 3/4 mile.
 ** When ALS inop, increase CAT CDE RVR to 60 and vis to 1 1/8 miles.
 *** Circling not authorized W of Rwy.

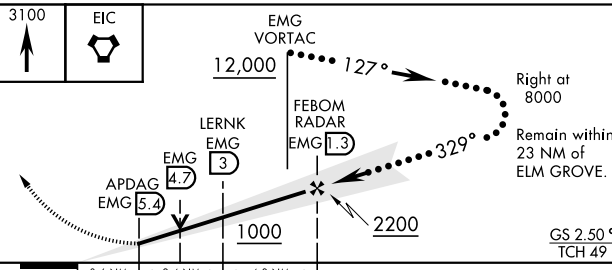
ATIS 307.025	SHREVEPORT APP CON 320°-152° 123.75 360.725 153°-319° 119.9 335.55	TOWER ★ 128.25 278.3	GND CON 121.8 253.5	ASR
------------------------	--	--------------------------------	-------------------------------	-----

CAUTION: Glideslope unreliable inside DH.

CAUTION: Localizer unusable for COUPLED approaches below 394'.



EMERG SAFE ALT 100 NM 3300



ELEV	165	THRE	161
HIRL Rwy 15-33 329°			
FAF to MAP 6.7 NM			
Knots	120	140	160
Min:Sec	3:21	2:52	2:31
	180	200	2:14
			2:01

CATEGORY	C	D	E
S-ILS 33*	361/24	200 (200-1/2)	
S-LOC 33**	560/35	399 (400-3/4)	
CIRCLING ***	NOT AUTHORIZED	760-2 595 (600-2)	780-2 1/4 615 (700-2 1/4)

HI-ILS or LOC Y RWY 33

SC-4, 26 DEC 2024 to 23 JAN 2025

SC-4, 26 DEC 2024 to 23 JAN 2025