

BOSSIER CITY, LOUISIANA

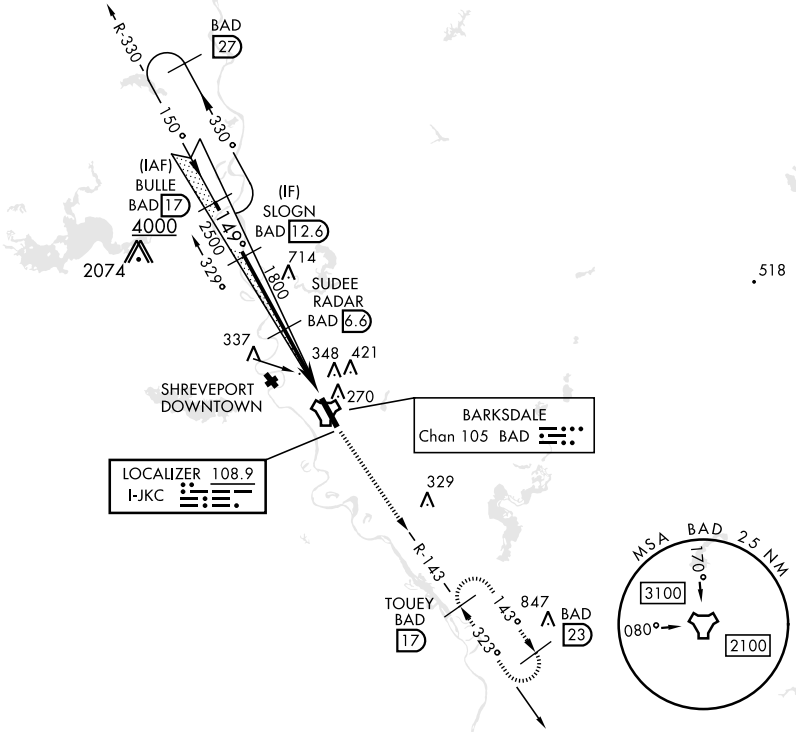
ILS or LOC Z RWY 15

LOC I-JKC 108.9	APCH CRS 149°	Rwy Ldg 11,758
	THRE 163	Arprt Elev 165

[USAF]

BARKSDALE AFB (KBAD)

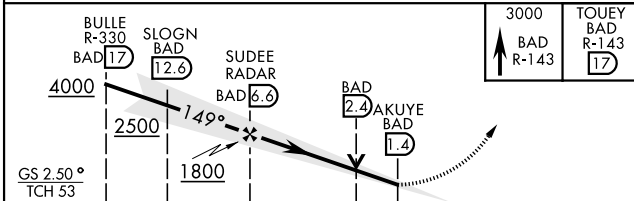
RADAR or DME required		ALSF-1 	MISSED APPROACH: Climb to 3000 via BAD R-143 direct TOUEY and hold.		
*When ALS inop, increase RVR to 40 and vis to 3/4 mile. **When ALS inop, increase CAT AB RVR to 55 and vis to 1 mile, CAT CDE vis to 1 3/8 miles. *** Circling not authorized W of Rwy.					
ATIS 307.025	SHREVEPORT APP CON 320°-152° 123.75 360.725 153°-319° 119.9 335.55	TOWER ★ 128.25 278.3	GND CON 121.8 253.5	ASR	



SC-4, 26 DEC 2024 to 23 JAN 2025

SC-4, 26 DEC 2024 to 23 JAN 2025

EMERG SAFE ALT 100 NM 3300



ELEV	165	THRE	163
HIRL Rwy 15-33			
FAF to MAP 5.2 NM			
Knots	60	90	120 150 180
Min:Sec	5:12	3:28	2:36 2:05 1:44

BOSSIER CITY, LOUISIANA

32° 30' N-93° 40' W

BARKSDALE AFB (KBAD)

Amdt 6 25JUN15

ILS or LOC Z RWY 15