

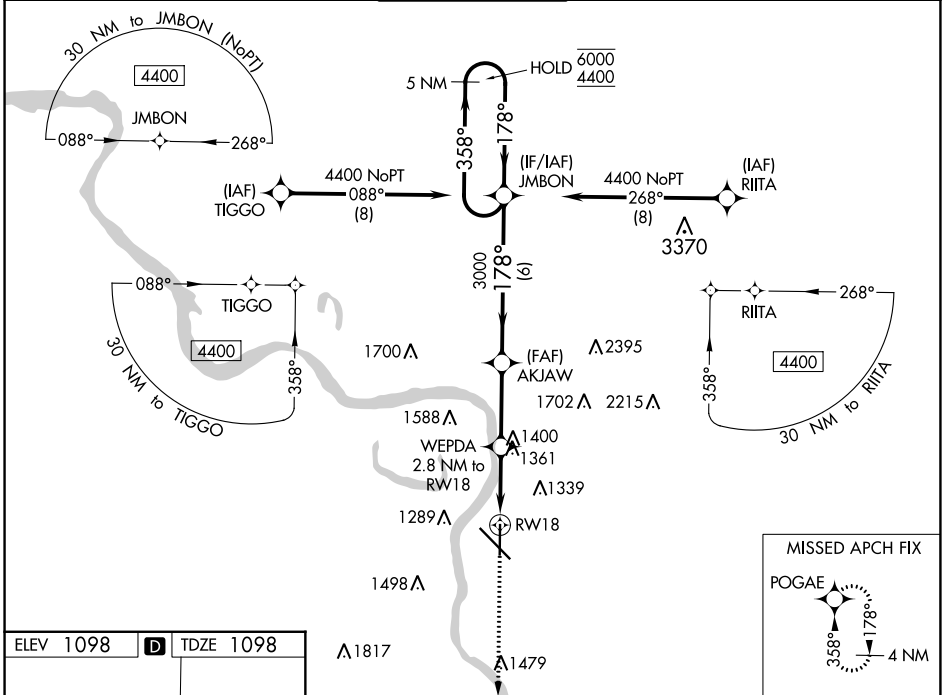
WAAS CH 77838 W18A	APP CRS 178°	Rwy Idg TDZE Apt Elev	6400 1098 1098
--	------------------------	-----------------------------	---

RNAV (GPS) RWY 18

SIoux GATEWAY/BRIG GENERAL BUD DAY FLD (SUX)

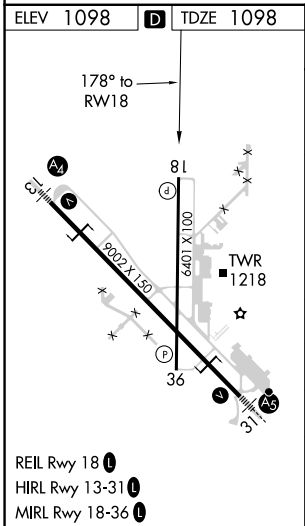
RNP APCH.	For uncompensated Baro-VNAV systems, LNAV/VNAV NA below -20°C or above 54°C.	MISSED APPROACH: Climb to 3200 direct POGAE and hold.
-----------	---	---

ATIS 119.45 270.8	SIoux CITY APP CON * 124.6 307.0	SIoux CITY TOWER * 118.7 (CTAF) 0 254.3	GND CON 121.9 348.6	UNICOM 122.95
-----------------------------	--	---	-------------------------------	-------------------------



NC-3, 26 DEC 2024 to 23 JAN 2025

NC-3, 26 DEC 2024 to 23 JAN 2025



ELEV 1098	TDZE 1098
3200 POGAE	WEPDA 2.8 NM to RWY 18
*LNAV only	*1.6 NM to RWY 18
AKJAW 3000	JMBON 5 NM Holding Pattern
3000	358° → 6000
178°	← 178° 4400
GP 3.00°	TCH 54
1.6	1.2
3 NM	6 NM
CATEGORY	A B C D
LPV DA	1352-3/4 254 (300-3/4)
LNAV/VNAV DA	1430-1 332 (400-1)
LNAV MDA	1680-1 582 (600-1) 1680-1 3/4 582 (600-1 3/4)
CIRCLING	1680-1 582 (600-1) 1700-1 602 (700-1) 1700-1 3/4 602 (700-1 3/4) 1860-2 1/2 762 (800-2 1/2)