

LOC I-JOU 111.1	APP CRS 210°	Rwy Idg 8999 TDZE 1430 Apt Elev 1430
---------------------------	------------------------	---

ILS or LOC RWY 21

JOE FOSS FLD (FSD)

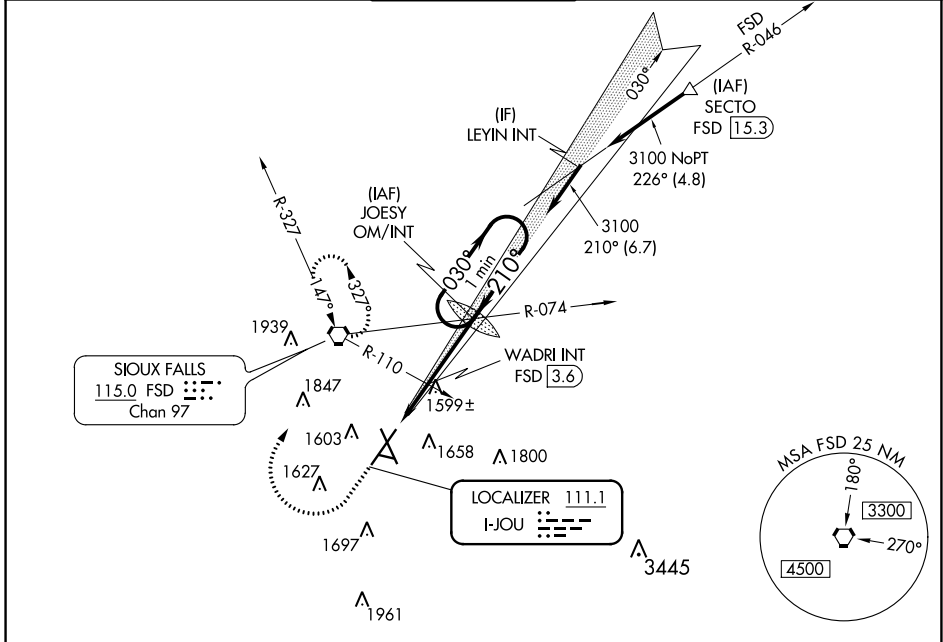
ASR -31°C

For inoperative MALSR increase S-ILS all Cats visibility to 3/4 mile, increase S-LOC 21 Cat C/D visibility to 1 1/8 mile. When using WADRI FIX minimums, increase S-LOC 21 Cat C/D visibility to 1 mile.

MALSR

MISSED APPROACH: Climb to 3400 then right turn direct FSD VORTAC and hold.

ATIS 126.6	SIoux FALLS APP CON * 125.8 306.2	SIoux FALLS TOWER * 118.3 (CTAF) 0 257.8	GND CON 121.9 348.6	UNICOM 122.95
----------------------	---	--	-------------------------------	-------------------------



ELEV 1430 TDZE 1430

TDZ/CL Rwy 21
REIL Rws 15 and 33
MIRL Rwy 9-27
HIRL Rws 3-21 and 15-33

FAF to MAP 4.9 NM

Knots	60	90	120	150	180
Min:Sec	4:54	3:16	2:27	1:58	1:38

3400 FSD

One Minute Holding Pattern

*LOC only.

WADRI INT FSD 3.6

JOESY OM/INT 3047

3100 030°

2100* 210°

3100

GS 3.00° TCH 49

2 NM 2.9 NM

CATEGORY	A	B	C	D
S-ILS 21	1630/18 200 (200-1/2)			
S-LOC 21	2100/24	670 (700-1/2)	2100-1 1/2	670 (700-1 1/2)
C CIRCLING	2100-1	670 (700-1)	2100-1 3/4	2200-2 1/2
WADRI FIX MINIMUMS				
S-LOC 21	1800/24	370 (400-1/2)	1800/35	370 (400-3/8)
C CIRCLING	1960-1	1980-1	2060-1 3/4	2200-2 1/2
	530 (600-1)	550 (600-1)	630 (700-1 3/4)	770 (800-2 1/2)

NC-1, 26 DEC 2024 to 23 JAN 2025

NC-1, 26 DEC 2024 to 23 JAN 2025