

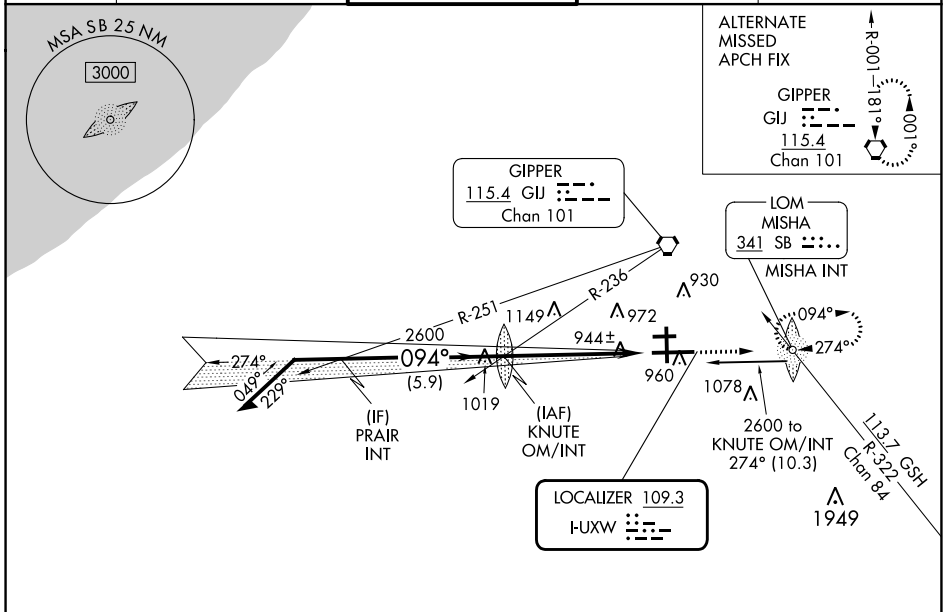
LOC I-UXW 109.3	APP CRS 094°	Rwy Idg 8412 TDZE 790 Apt Elev 798
---------------------------	------------------------	---

ILS or LOC RWY 9R

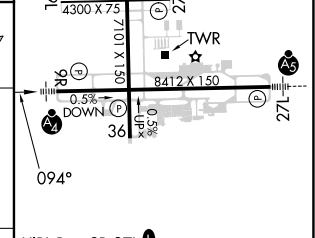
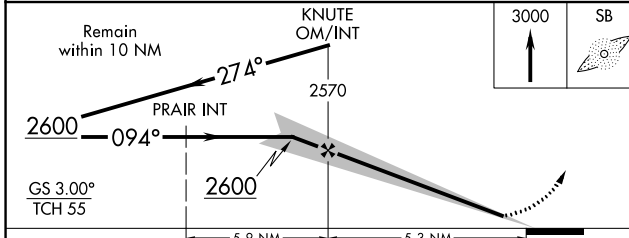
SOUTH BEND INTL (SBN)

ADF required. ▼ Rwy 9R helicopter visibility reduction below 3/4 SM NA. ▲ For inop ALS, increase S-ILS 9R visibility all Cats to RVR 5500, increase S-LOC 9R Cats C/D visibility to RVR 6000. Circling Rwy 27R NA at night.	MALSF 	MISSED APPROACH: Climb to 3000 direct MISHA LOM/INT and hold, continue climb-in-hold to 3000.
---	-----------	---

ATIS 120.675	SOUTH BEND APP CON* 118.55 257.8	SOUTH BEND TOWER* 135.675 (CTAF) 257.8	GND CON 121.7	CLNC DEL 121.9
------------------------	--	--	-------------------------	--------------------------



ELEV 798	TDZE 790
----------	----------



CATEGORY	A	B	C	D	
S-ILS 9R	1135/40 345 (400-3/4)				
S-LOC 9R	1200/40	410 (500-3/4)	1200/50	410 (500-1)	
CIRCLING	1280-1 482 (500-1)		1440-1 3/4 642 (700-1 3/4)	1500-2 1/4 702 (800-2 1/4)	
FAF to MAP 5.3 NM					
Knots	60	90	120	150	180
Min:Sec	5:18	3:32	2:39	2:07	1:46

EC-2, 26 DEC 2024 to 23 JAN 2025

EC-2, 26 DEC 2024 to 23 JAN 2025