

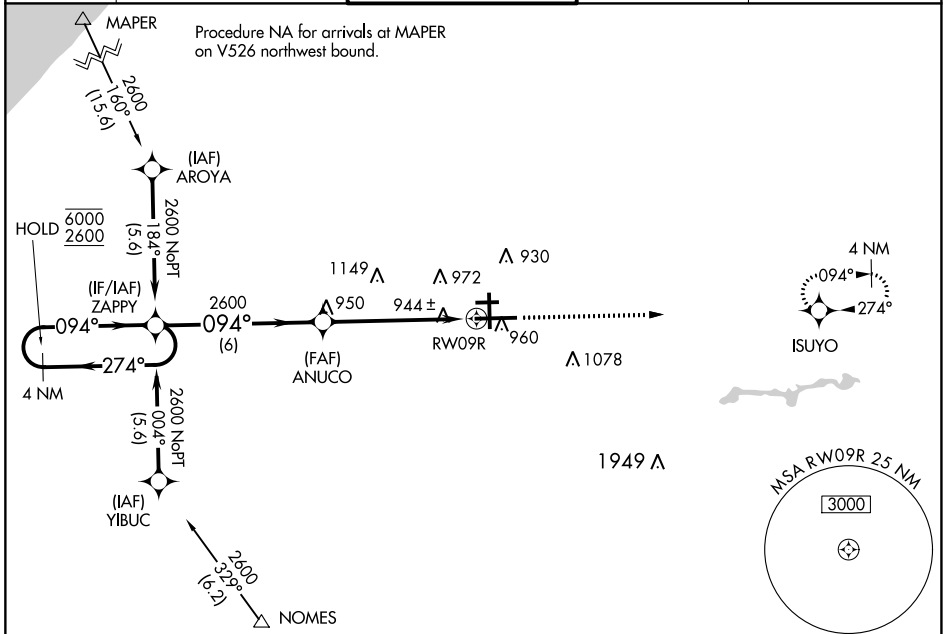
WAAS CH <b>60908</b> <b>W09B</b>	APP CRS <b>094°</b>	Rwy Idg <b>8412</b> TDZE <b>790</b> Apt Elev <b>798</b>
--	------------------------	---

# RNAV (GPS) RWY 9R

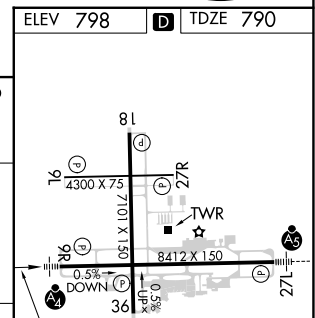
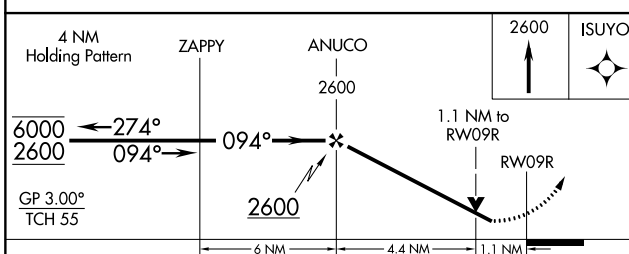
SOUTH BEND INTL (SBN)

RNP APCH - GPS.		MALSF	MISSED APPROACH: Climb to 2600 direct ISUYO and hold.
⚠ For uncompensated Baro-VNAV systems, LNAV/VNAV NA below -1°C or above 54°C. ⚠ Circling Rwy 27R NA at night. Rwy 9R helicopter visibility reduction below RVR 4000 NA. ⚠ For inop ALS, increase LPV all Cats visibility to RVR 5500 and LNAV Cat C/D to RVR 6000.			

ATIS <b>120.675</b>	SOUTH BEND APP CON ★ <b>118.55 257.8</b>	SOUTH BEND TOWER ★ <b>135.675 (CTAF) 257.8</b>	GND CON <b>121.7</b>	CLNC DEL <b>121.9</b>
------------------------	---	---	-------------------------	--------------------------



ELEV 798	TDZE 790
----------	----------



CATEGORY	A	B	C	D
LPV DA		1135/40	345 (400-3/4)	
LNAV/VNAV DA		1222/50	432 (500-1)	
LNAV MDA	1200/40	410 (500-3/4)	1200/50	410 (500-1)
<b>C</b> CIRCLING	1280-1	482 (500-1)	1440-1 3/4 642 (700-1 3/4)	1500-2 1/4 702 (800-2 1/4)

HIRL Rwy 9R-27L  
 MIRL Rwy 18-36  
 MIRL Rwy 9L-27R

EC-2, 26 DEC 2024 to 23 JAN 2025

EC-2, 26 DEC 2024 to 23 JAN 2025