

WAAS CH <b>65931</b> <b>W04A</b>	APP CRS <b>038°</b>	Rwy Idg TDZE Apt Elev	<b>4499</b> <b>1949</b> <b>1957</b>
--	------------------------	-----------------------------	---

# RNAV (GPS) RWY 4L

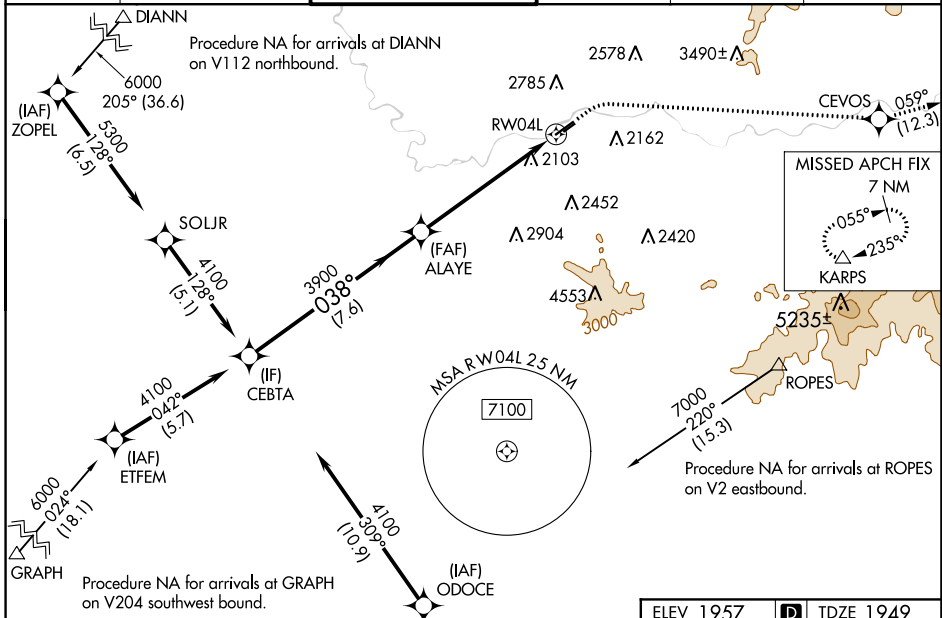
FELTS FLD (S'F'F)

RNP APCH - GPS.

**⚠** Circling to Rwy 22L NA at night. Circling NA northwest of Rwy 4L-22R. Rwy 4L helicopter visibility reduction below 3/4 SM NA. For uncompensated Baro-VNAV systems, LNAV/VNAV NA below -18°C or above 54°C.

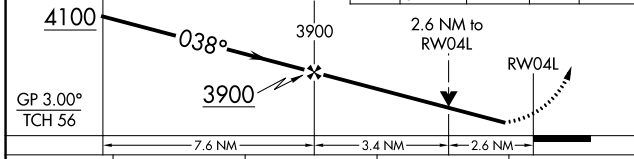
**⚠** MISSED APPROACH: Climb to 2850 then climbing right turn to 8000 direct CEVOS and on track 059° to KARPS and hold, continue climb-in-hold to 8000. \*LPV missed approach requires minimum climb of 330 feet per NM to 5400.

ATIS <b>120.55</b>	SPOKANE APP CON <b>133.35 263.0</b>	FELTS TOWER * <b>132.5 (CTAF) 239.025</b>	GND CON <b>121.7</b>	CLNC DEL <b>121.7</b>	UNICOM <b>122.95</b>
-----------------------	--	--	-------------------------	--------------------------	-------------------------



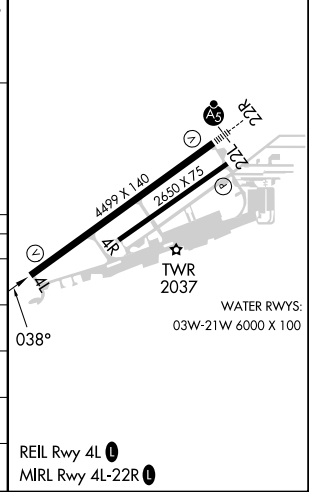
VGSI and RNAV glidepath not coincident (VGSI Angle 3.00/TCH 50).  
CEBTA

2850	8000	CEVOS	tr 059°	KARPS
------	------	-------	---------	-------



ELEV 1957	<b>D</b> TDZE 1949
-----------	--------------------

CATEGORY	A	B	C	D
LPV DA*		2203-3/4	254 (300-3/4)	
LPV DA		2529-1 5/8	580 (600-1 5/8)	
LNAV/VNAV DA		2779-2 1/2	830 (900-2 1/2)	
LNAV MDA	2820-1 871 (900-1)	2820-1 1/4 871 (900-1 1/4)	2820-2 1/2	871 (900-2 1/2)
CIRCLING	2820-1 1/4	863 (900-1 1/4)	3100-3 1143 (1200-3)	3360-3 1403 (1500-3)



NW-1, 26 DEC 2024 to 23 JAN 2025

NW-1, 26 DEC 2024 to 23 JAN 2025