

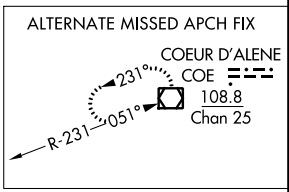
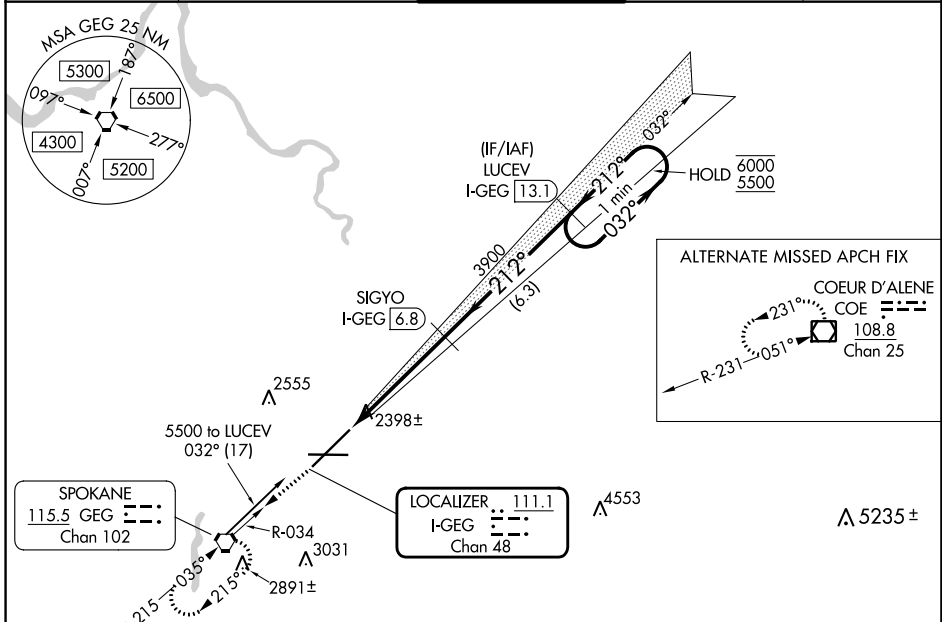
LOC/DME I-GEG 111.1 Chan 48	APP CRS 212°	Rwy Idg 11002 TDZE 2346 Apt Elev 2385
---	------------------------	--

ILS RWY 21 (SA CAT I)

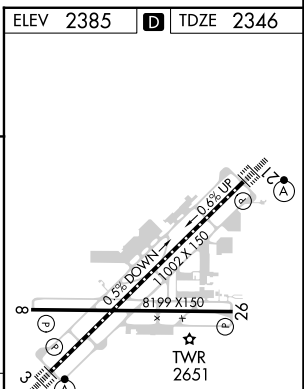
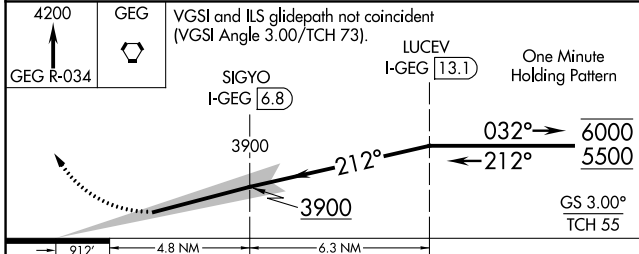
SPOKANE INTL (GEG)

DME required. Requires specific OPSPEC, MSPEC, or LOA approval.		ALSF-2 	MISSED APPROACH: Climb to 4200 on GEG VORTAC R-034 to GEG VORTAC and hold, continue climb-in-hold to 4200.
--	--	------------	--

ATIS 124.325 254.375	SPOKANE APP CON 123.75 282.25 (205°-025°) 133.35 263.0 (026°-204°)	SPOKANE TOWER 118.3 278.3	GND CON 121.9 348.6	CLNC DEL 127.55
--------------------------------	--	-------------------------------------	-------------------------------	---------------------------



SPOKANE 115.5 GEG Chan 102	LOCALIZER I-GEG 111.1 Chan 48	ELEV 2385	TDZE 2346
----------------------------------	-------------------------------------	-----------	-----------



4200 GEG R-034	GEG	VGSI and ILS glidepath not coincident (VGSI Angle 3.00/TCH 73).	LUCEV I-GEG 13.1	One Minute Holding Pattern	
CATEGORY		A	B	C	D
S-ILS 21		RA 197/14 150 DA 2496			

SA CATEGORY I ILS - SPECIAL AIRCREW & AIRCRAFT CERTIFICATION REQUIRED

TDZ/CL Rwy 3 and 21
REIL Rwy 8 and 26
HIRL Rwy 3-21
MIRL Rwy 8-26

NW-1, 26 DEC 2024 to 23 JAN 2025

NW-1, 26 DEC 2024 to 23 JAN 2025