

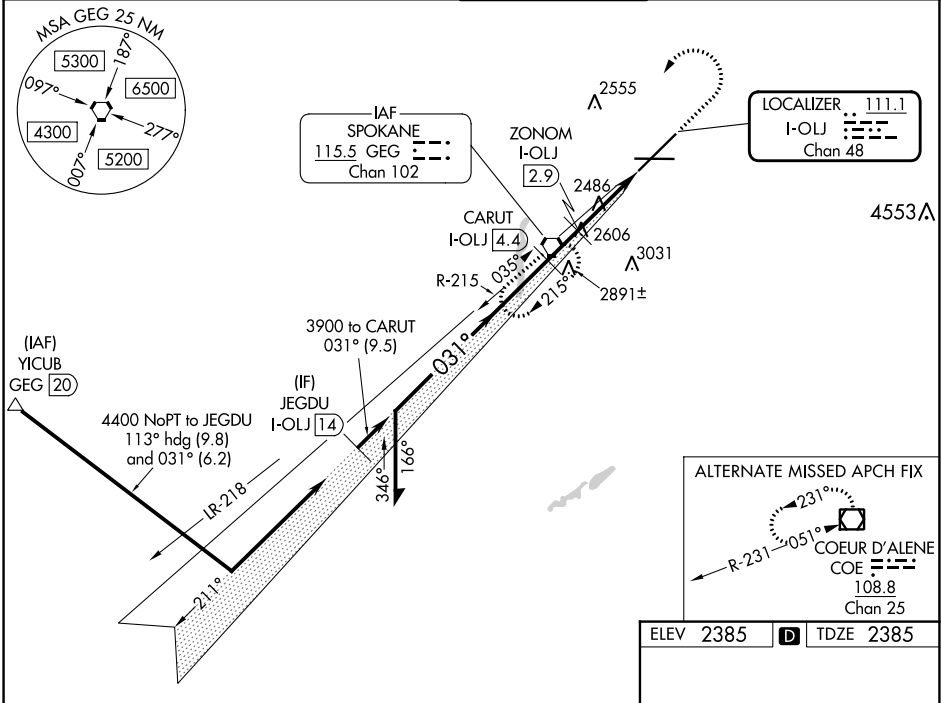
LOC/DME I-OLJ <b>111.1</b> Chan 48	APP CRS <b>031°</b>	Rwy Idg TDZE Apt Elev	<b>11002</b> <b>2385</b> <b>2385</b>
--	------------------------	-----------------------------	--

# ILS or LOC RWY 3

SPOKANE INTL (GEG)

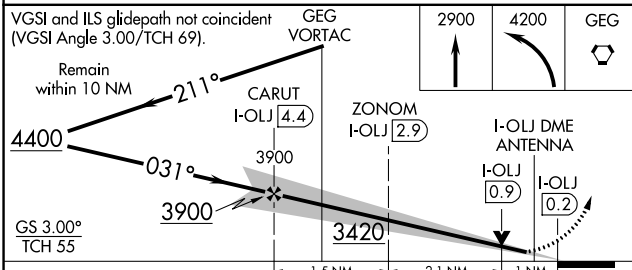
DME required for localizer only.	ALSF-2	MISSED APPROACH: Climb to 2900 then climbing left turn to 4200 direct GEG VORTAC and hold, continue climb-in-hold to 4200.
For inop ALS, increase S-LOC 3 Cat C/D visibility to RVR 5500.		

ATIS <b>124.325 254.375</b>	SPOKANE APP CON <b>123.75 282.25</b> (205°-025°) <b>133.35 263.0</b> (026°-204°)	SPOKANE TOWER <b>118.3 278.3</b>	GND CON <b>121.9 348.6</b>	CLNC DEL <b>127.55</b>
--------------------------------	--	-------------------------------------	-------------------------------	---------------------------



NW-1, 26 DEC 2024 to 23 JAN 2025

NW-1, 26 DEC 2024 to 23 JAN 2025



CATEGORY	A	B	C	D
	S-ILS 3	2585/18 200 (200-½)		
S-LOC 3	2780/24	395 (400-½)	2780/35	395 (400-¾)
	CIRCLING	2960-1 575 (600-1)	2980-1 595 (600-1)	3180-2¼ 795 (800-2¼)

