

APP CRS	Rwy Idg	8199
076°	TDZE	2376
	Apt Elev	2385

RNAV (RNP) Z RWY 8

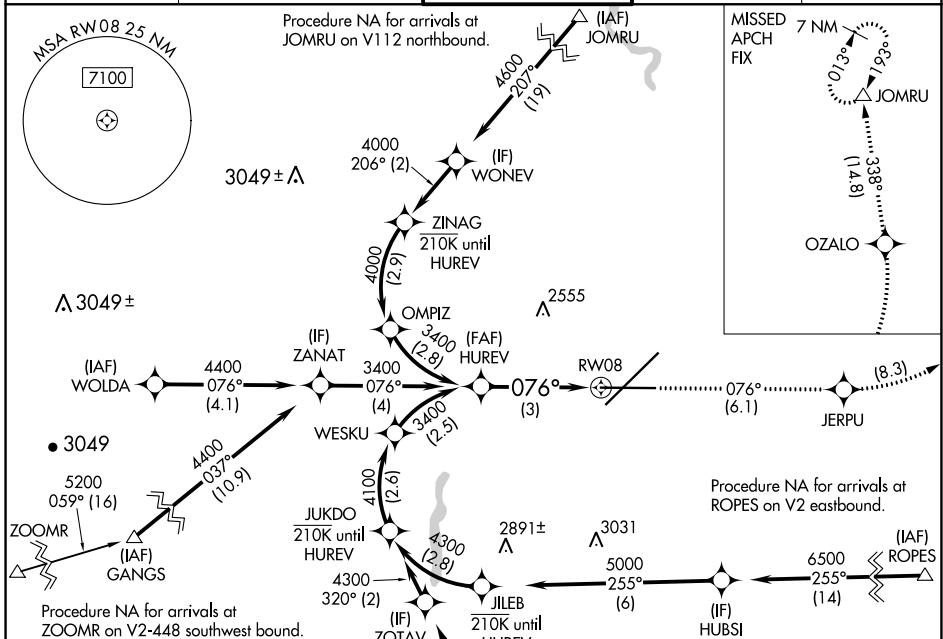
SPOKANE INTL (GEG)

RNP AR APCH. RF required.

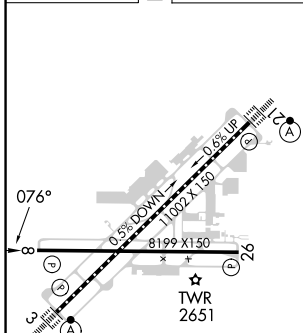
▼ For uncompensated Baro-VNAV systems, procedure NA below -18°C or above 53°C.

MISSED APPROACH: Climb to 7000 on track 076° to JERPU, left turn to OZALO, and on track 338° to JOMRU and hold.

ATIS	SPOKANE APP CON	SPOKANE TOWER	GND CON	CLNC DEL
124.325 254.375	123.75 282.25 (205°-025°) 133.35 263.0 (026°-204°)	118.3 278.3	121.9 348.6	127.55



ELEV 2385	D	TDZE 2376
-----------	----------	-----------



GP 3.00°	TCH 60	See planview for multiple IF locations.		
CATEGORY	A	B	C	D
RNP 0.11 DA	2665-7/8 289 (300-7/8)			
RNP 0.30 DA	2869-1 3/8 493 (500-1 3/8)			

SPOKANE, WASHINGTON
Amdt 1A 25APR19

47°37'N-117°32'W

SPOKANE INTL (GEG)
RNAV (RNP) Z RWY 8

NW-1, 26 DEC 2024 to 23 JAN 2025

NW-1, 26 DEC 2024 to 23 JAN 2025

AUTHORIZATION REQUIRED