

ATIS  
124.325 254.375  
CLNC DEL  
127.55  
GND CON  
121.9 348.6  
SPOKANE TOWER  
118.3 278.3

**TOP ALTITUDE:  
6000**

**TAKEOFF MINIMUMS**

Rwys 3, 8: Standard with minimum climb of 320' per NM to 5300.  
Rwys 21, 26: Standard with minimum climb of 250' per NM to 5200.

WHATCOM  
113.0 HUH :--:--:  
Chan 77

EPHRATA  
112.6 EPH :--:--:  
Chan 73

MOSES LAKE  
115.0 MWH :--:--:  
Chan 97

WEST DEPARTURE  
123.75 282.25  
(205°-025°)

YAKIMA  
116.0 YKM :--:--:  
Chan 107

SPOKANE  
115.5 GEG :--:--:  
Chan 102  
5200 (Lost Comm.)

EAST DEPARTURE  
133.35 263.0  
(026°-204°)

PASCO  
113.75 PSC :--:--:  
Chan 84(Y)

WALLA WALLA  
116.4 ALW :--:--:  
Chan 111

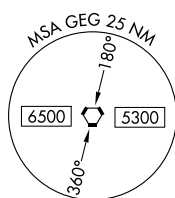
PENDLETON  
114.7 PDT :--:--:  
Chan 94

COEUR D'ALENE  
108.8 COE :--:--:  
Chan 25

MULLAN PASS  
117.8 MLP :--:--:  
Chan 125

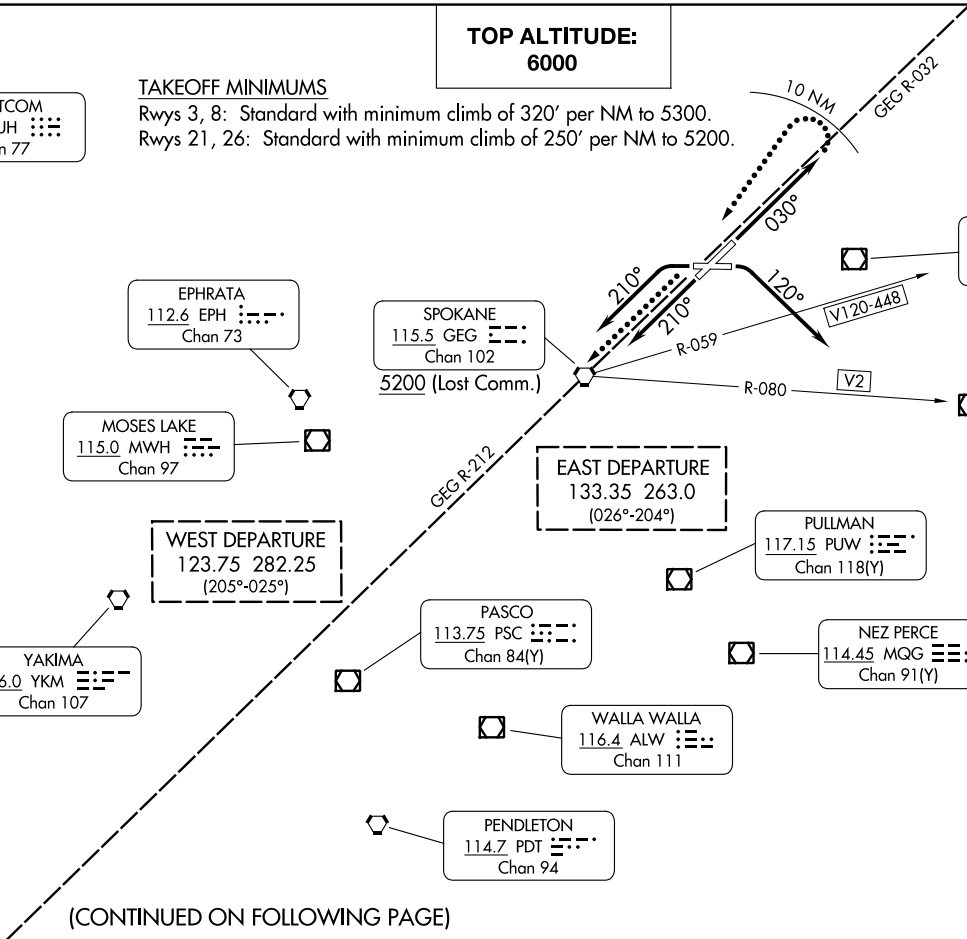
PULLMAN  
117.15 PUW :--:--:  
Chan 118(Y)

NEZ PERCE  
114.45 MQG :--:--:  
Chan 91(Y)



(CONTINUED ON FOLLOWING PAGE)

NOTE: Chart not to scale.





DEPARTURE ROUTE DESCRIPTION

TAKEOFF RUNWAY 3: Climb on heading 030° (or ATC assigned heading) for vectors to assigned route/fix, thence . . . .

TAKEOFF RUNWAY 8: Climbing right turn heading 120° (or ATC assigned heading) for vectors to assigned route/fix, thence . . . .

TAKEOFF RUNWAY 21: Climb on heading 210° (or ATC assigned heading) for vectors to assigned route/fix, thence . . . .

TAKEOFF RUNWAY 26: Climbing left turn heading 210° (or ATC assigned heading) for vectors to assigned route/fix, thence . . . .

. . . . maintain 6000 or assigned higher altitude, expect filed altitude/flight level 10 minutes after departure.

LOST COMMUNICATIONS

Climb direct GEG VORTAC before proceeding on course.

Aircraft northeastbound V120-448 and eastbound V2: Climb direct GEG VORTAC, cross GEG VORTAC at or above 5200.

Aircraft departing Rwy 3: If not in contact with ATC within 10 NM after takeoff, turn left direct GEG VORTAC, cross GEG VORTAC at or above 5200, thence on assigned route/fix.

NW-1, 26 DEC 2024 to 23 JAN 2025

NW-1, 26 DEC 2024 to 23 JAN 2025