

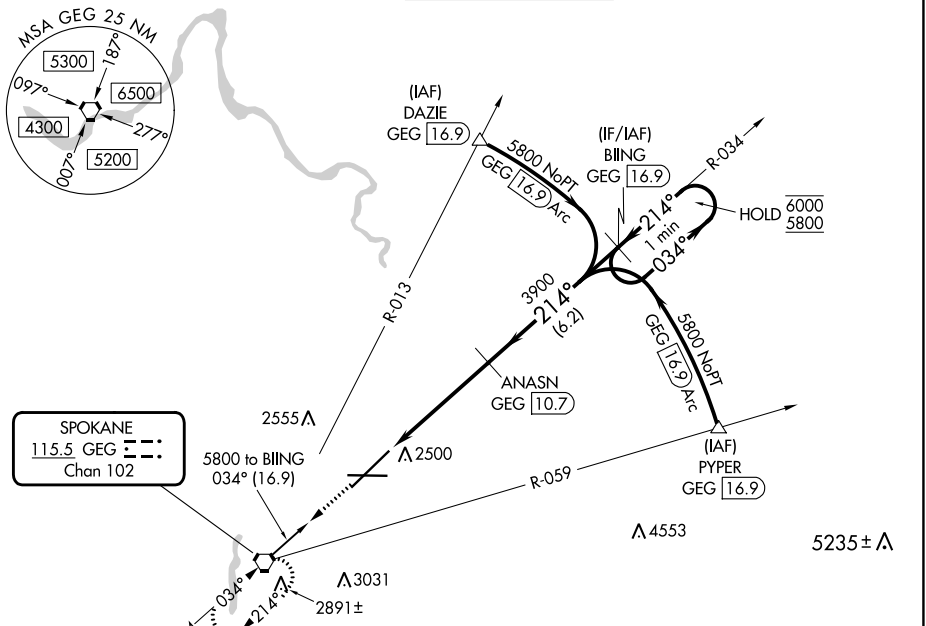
VORTAC GEG 115.5 Chan 102	APP CRS 214°	Rwy Idg TDZE Apt Elev	11002 2346 2385
---	------------------------	-----------------------------	--

VOR RWY 21

SPOKANE INTL (GEG)

DME required.		ALSF-2	MISSED APPROACH: Climb to 4200 direct GEG VORTAC and hold, continue climb-in-hold to 4200.	
---------------	--	--------	--	--

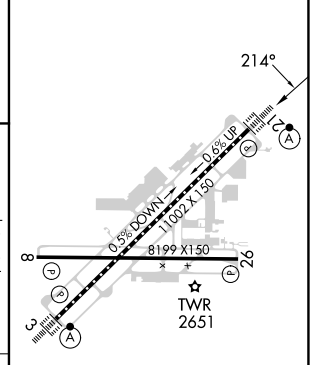
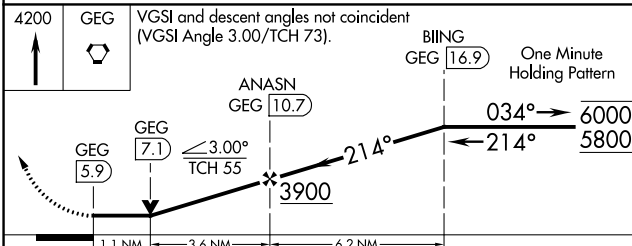
ATIS 124.325 254.375	SPOKANE APP CON 123.75 282.25 (205°-025°) 133.35 263.0 (026°-204°)	SPOKANE TOWER 118.3 278.3	GND CON 121.9 348.6	CLNC DEL 127.55
--------------------------------	--	-------------------------------------	-------------------------------	---------------------------



SPOKANE
115.5 GEG ---
Chan 102

ELEV 2385 TDZE 2346

4200	GEG	VGSI and descent angles not coincident (VGSI Angle 3.00/TCH 73).
------	-----	--



CATEGORY	A	B	C	D
S-21	2760/24	414 (400-½)	2760/40	414 (400-¾)
CIRCLING	2960-1 575 (600-1)	2980-1 595 (600-1)	3180-2¼ 795 (800-2¼)	3380-3 995 (1000-3)

TDZ/CL Rws 3 and 21
REIL Rws 8 and 26
HIRL Rwy 3-21
MIRL Rwy 8-26

NW-1, 26 DEC 2024 to 23 JAN 2025

NW-1, 26 DEC 2024 to 23 JAN 2025