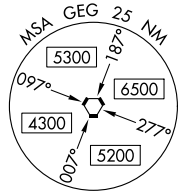
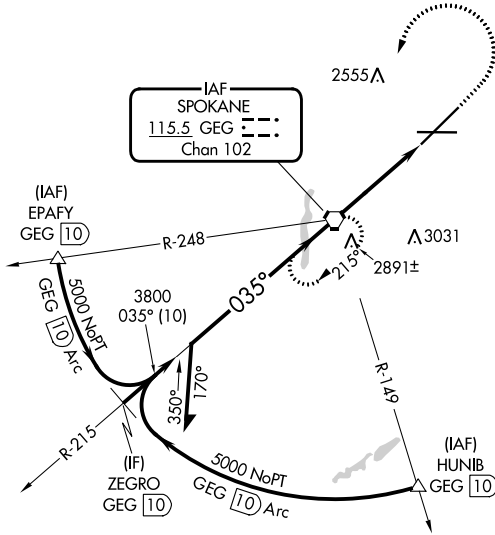


VORTAC GEG <b>115.5</b> Chan 102	APP CRS <b>035°</b>	Rwy Idg <b>11002</b> TDZE <b>2385</b> Aprt Elev <b>2385</b>
--	------------------------	---

# VOR RWY 3

SPOKANE INTL (GEG)

	ALSF-2	MISSED APPROACH: Climb to 3200 then climbing left turn to 4200 direct GEG VORTAC and hold, continue climb-in-hold to 4200.				
	<table border="1"> <tr> <td>ATIS <b>124.325 254.375</b></td> <td>SPOKANE APP CON <b>123.75 282.25</b> (205°-025°) <b>133.35 263.0</b> (026°-204°)</td> <td>SPOKANE TOWER <b>118.3 278.3</b></td> <td>GND CON <b>121.9 348.6</b></td> <td>CLNC DEL <b>127.55</b></td> </tr> </table>	ATIS <b>124.325 254.375</b>	SPOKANE APP CON <b>123.75 282.25</b> (205°-025°) <b>133.35 263.0</b> (026°-204°)	SPOKANE TOWER <b>118.3 278.3</b>	GND CON <b>121.9 348.6</b>	CLNC DEL <b>127.55</b>
ATIS <b>124.325 254.375</b>	SPOKANE APP CON <b>123.75 282.25</b> (205°-025°) <b>133.35 263.0</b> (026°-204°)	SPOKANE TOWER <b>118.3 278.3</b>	GND CON <b>121.9 348.6</b>	CLNC DEL <b>127.55</b>		



ELEV 2385 TDZE 2385

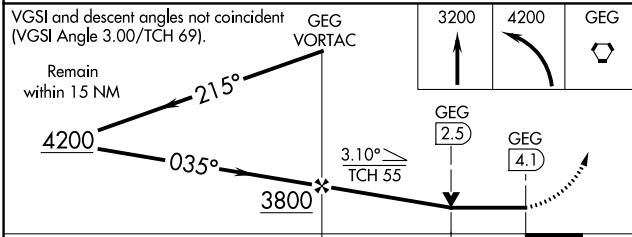
0.5% DOWN, 0.8% UP, 11002 X 150, 8199 X 150

TWR 2651

035°

TDZ/CL Rws 3 and 21  
REIL Rws 8 and 26  
HIRL Rwy 3-21  
MIRL Rwy 8-26

FAF to MAP 4.1 NM					
Knots	60	90	120	150	180
Min:Sec	4:06	2:44	2:03	1:38	1:22



CATEGORY	A	B	C	D	E
S-3	2980/24	595 (600-1/2)	2980-1 1/4	595 (600-1 1/4)	
CIRCLING	2980-1	595 (600-1)	3180-2 1/4 795 (800-2 1/4)	3380-3	995 (1000-3)

NW-1, 26 DEC 2024 to 23 JAN 2025

NW-1, 26 DEC 2024 to 23 JAN 2025