

APP CRS 288°	Rwy Idg TDZE Apt Elev	N/A N/A 1375
------------------------	-----------------------------	---

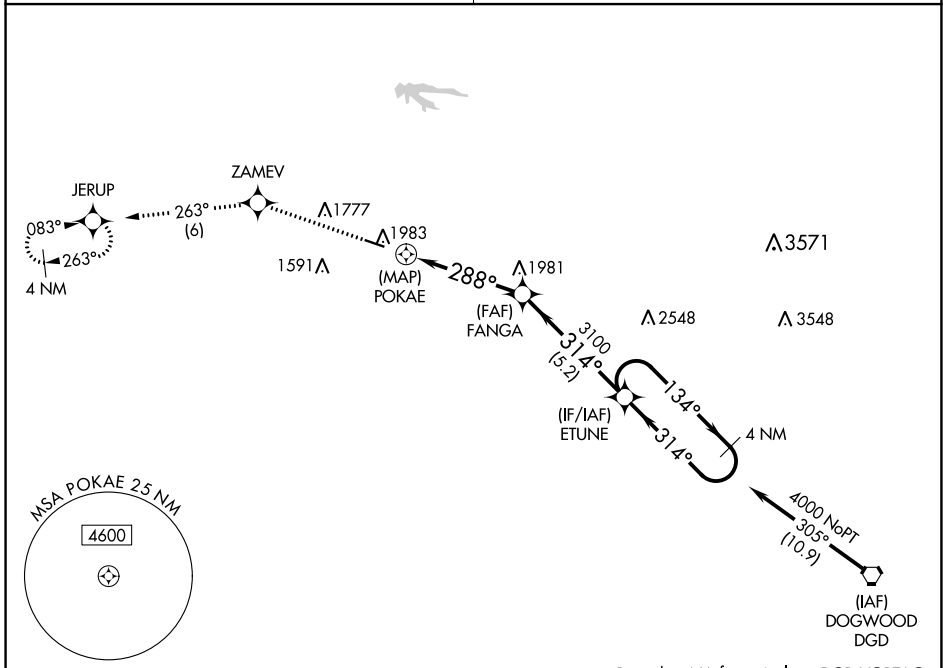
RNAV (GPS)-B DOWNTOWN (3DW)

NA Circling NA north of Rwy 11-29. DME/DME RNP-0.3 NA. Use Springfield-Branson Nil altimeter setting; when not received, use Branson West altimeter setting and increase all MDA 60 feet. Procedure NA at night. Helicopter visibility reduction below 1 SM NA.

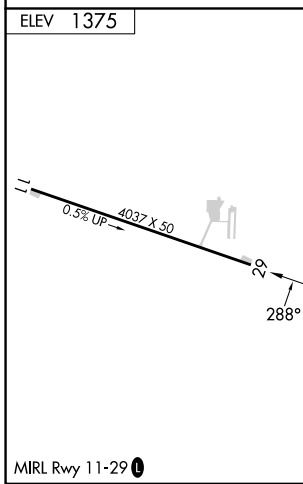
MISSED APPROACH: Climb to 4000 direct ZAMEV and track 263° to JERUP and hold.

SPRINGFIELD APP CON
124.95 353.925

UNICOM
122.8 (CTAF) 0



Procedure NA for arrivals on DGD VORTAC airway radials 232 CW 311.



4000	ZAMEV	tr 263°	JERUP	Visual Segment - Obstacles.
↑	◆		◆	
POKAE				ETUNE
FANGA				4 NM Holding Pattern
3100				134° →
				← 314°
				4000
0.9 NM		4.4 NM		5.2 NM
CATEGORY	A	B	C	D
C CIRCLING	2280-1¼ 905 (1000-1¼)		NA	

NC-3, 26 DEC 2024 to 23 JAN 2025

NC-3, 26 DEC 2024 to 23 JAN 2025