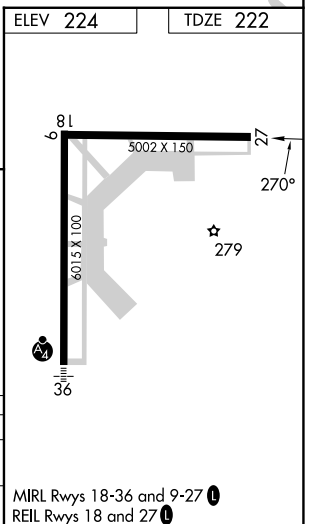
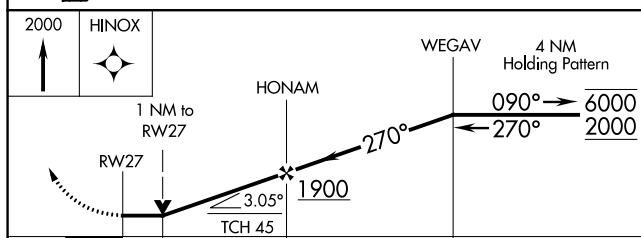
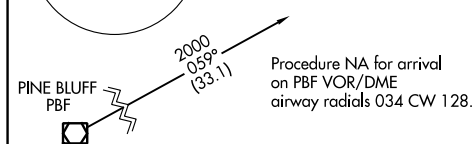
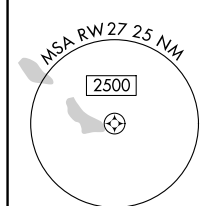
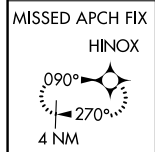
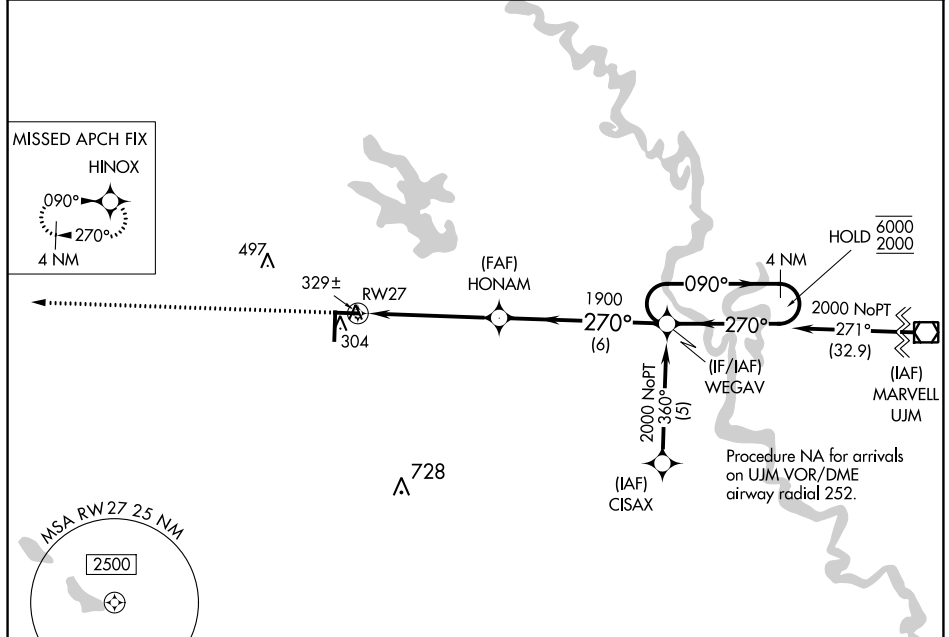


APP CRS	Rwy Idg	5002
270°	TDZE	222
	Apt Elev	224

RNAV (GPS) RWY 27

STUTTGART MUNI CARL HUMPHREY FLD (SGT)

RNP APCH - GPS.		MISSED APPROACH: Climb to 2000 direct HINOX and hold.	
Rwy 27 helicopter visibility reduction below 3/4 SM NA.		AWOS-3PT	LITTLE ROCK APP CON
		119.025	135.4 353.6
		CLNC DEL	UNICOM
		123.7	122.8 (CTAF) 0



CATEGORY	A	B	C	D
LNAV MDA	580-1 358 (400-1)			
CIRCLING	660-1 436 (500-1)	680-1 456 (500-1)	760-1½ 536 (600-1½)	860-2 636 (700-2)

MIRL Rwy 18-36 and 9-27 0
REIL Rwy 18 and 27 0

SC-1, 26 DEC 2024 to 23 JAN 2025

SC-1, 26 DEC 2024 to 23 JAN 2025