

# HI-ILS or LOC Z RWY 22R

LOC I-JWU <b>108.7</b>	APCH CRS <b>223°</b>	Rwy Idg 22R <b>10,014</b>	22L <b>8014</b>
		TDZE <b>240</b>	<b>235</b>
		Arprt Elev <b>241</b>	<b>241</b>

JAL-409 [USAF]

SHAW AFB (KSSC)

RADAR or DME Required.

▲ \* When ALS inop, increase RVR to 40 and vis to ¾ mile.  
 \*\* When ALS inop, increase vis to 1¼ miles.



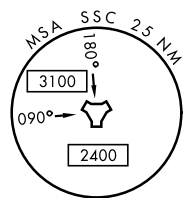
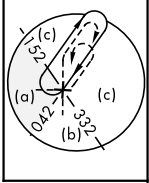
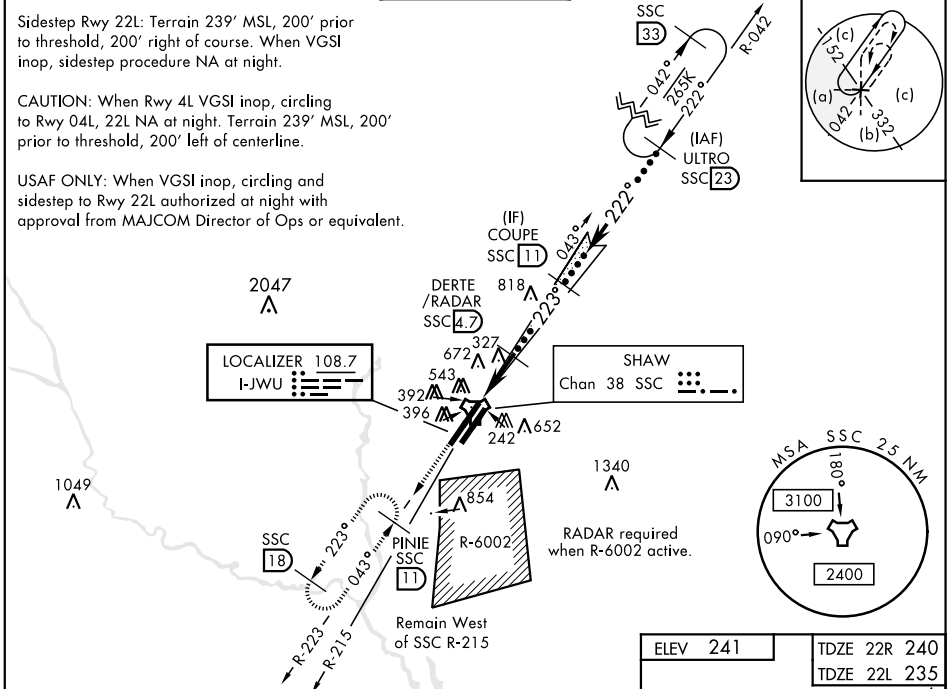
MISSED APPROACH: Climbing to 2000, intercept SSC TACAN R-223 to PINIE and hold.

ATIS ★ <b>132.125 270.1</b>	SHAW APP CON <b>125.4 318.1</b>	SHAW TOWER ★ <b>126.65 254.25</b>	GND CON <b>126.1 275.8</b>	CLNC DEL <b>126.1 275.8</b>
--------------------------------	------------------------------------	--------------------------------------	-------------------------------	--------------------------------

Sidestep Rwy 22L: Terrain 239' MSL, 200' prior to threshold, 200' right of course. When VGSI inop, sidestep procedure NA at night.

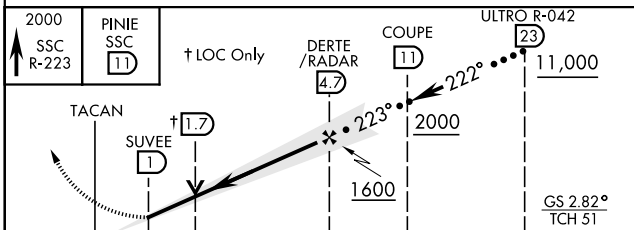
CAUTION: When Rwy 4L VGSI inop, circling to Rwy 04L, 22L NA at night. Terrain 239' MSL, 200' prior to threshold, 200' left of centerline.

USAF ONLY: When VGSI inop, circling and sidestep to Rwy 22L authorized at night with approval from MAJCOM Director of Ops or equivalent.

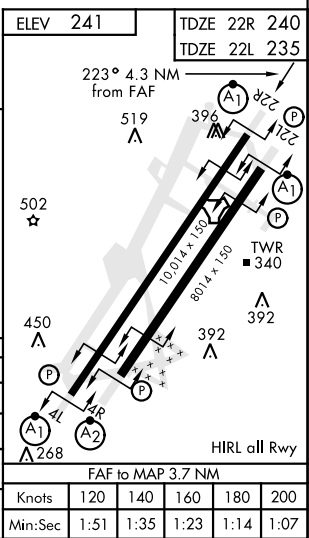


RADAR required when R-6002 active.

EMERG SAFE ALT 100 NM 3800



CATEGORY	C	D	E
S-ILS 22R *	440/24	200 (200-½)	
S-LOC 22R **	660/40	420 (500-¾)	
SIDESTEP ** 22L	660-1¼	425 (500-1¼)	
CIRCLING	1000-2¼ 759 (800-2¼)	1000-2½ 759 (800-2½)	1000-2¾ 759 (800-2¾)



# HI-ILS or LOC Z RWY 22R

SE-2, 26 DEC 2024 to 23 JAN 2025

SE-2, 26 DEC 2024 to 23 JAN 2025