

SUMTER, SOUTH CAROLINA

TACAN Y RWY 4L

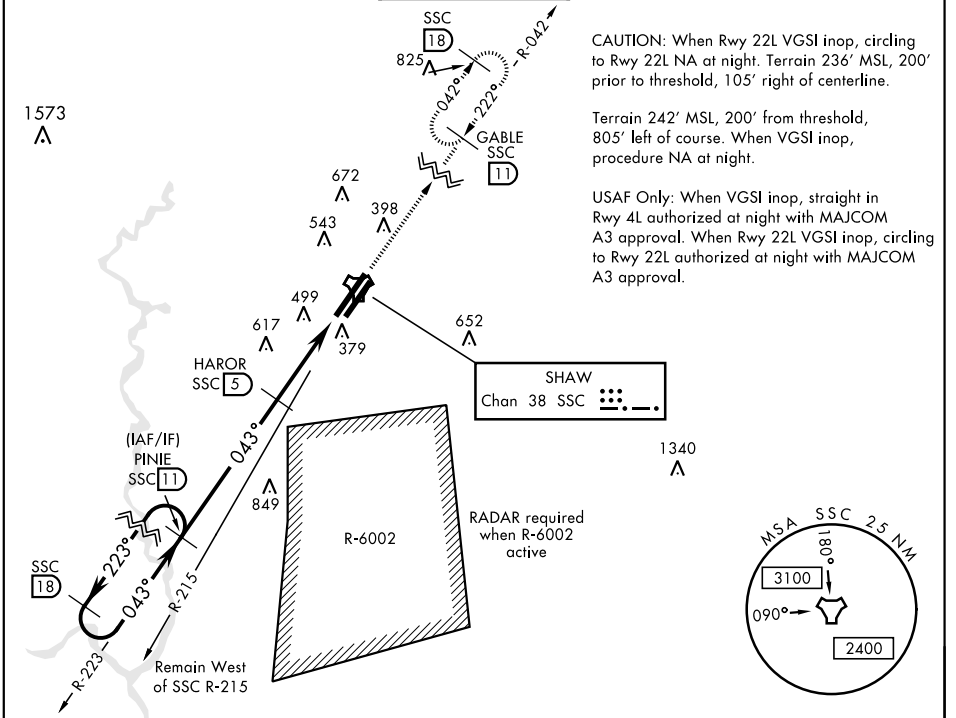
TACAN SSC Chan 38	APCH CRS 043°	Rwy ldg TDZE 240 Arprt Elev 241	4L 10,014	4R 8014
--------------------------	----------------------	---	------------------	----------------

AL-409 [USAF]

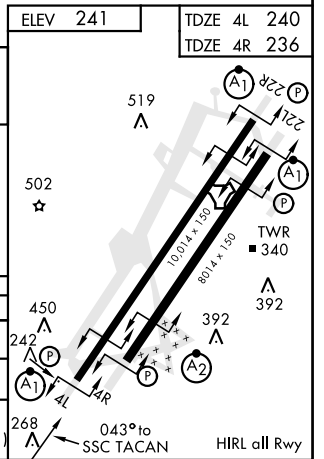
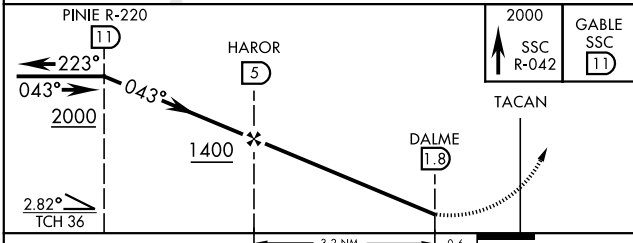
SHAW AFB (KSSC)

▼ * When ALS inop, increase CAT AB RVR to 55 and vis to 1 mile, CAT CDE vis to 1½ miles.
ALS F-1
MISSED APPROACH: Climbing to 2000, intercept SSC TACAN R-042 to GABLE and hold.

ATIS ★ 132.125 270.1	SHAW APP CON 125.4 318.1	SHAW TOWER ★ 126.65 254.25	GND CON 126.1 275.8	CLNC DEL 126.1 275.8
--------------------------------	------------------------------------	--------------------------------------	-------------------------------	--------------------------------



EMERG SAFE ALT 100 NM 3800



CATEGORY	A	B	C	D	E
S-4L *	800/50	560 (600-1)	800/60	560 (600-1½)	
SIDESTEP * 4R	800/50	564 (600-1)	800-1¾	564 (600-1½)	
C CIRCLING	820-1 579 (600-1)	880-1 639 (700-1)	1000-2¼ 759 (800-2¼)	1000-2½ 759 (800-2½)	1000-2¾ 759 (800-2¾)

SUMTER, SOUTH CAROLINA
Amdt 1 07NOV19

33° 58' N-80° 28' W

SHAW AFB (KSSC)

TACAN Y RWY 4L

SE-2, 26 DEC 2024 to 23 JAN 2025

SE-2, 26 DEC 2024 to 23 JAN 2025