

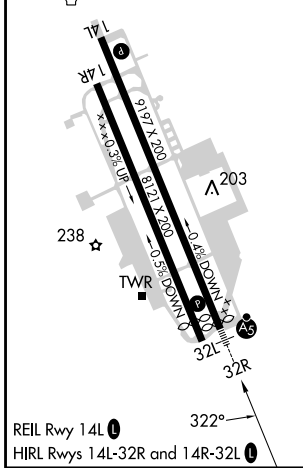
WAAS CH <b>53343</b> <b>W32B</b>	APP CRS <b>322°</b>	Rwy Idg TDZE Apt Elev	<b>9006</b> <b>31</b> <b>37</b>
----------------------------------------	------------------------	-----------------------------	---------------------------------------

# RNAV (GPS) RWY 32R

MOFFETT FEDERAL AIRFIELD (NUQ)

RNP APCH - GPS.	MALSR 	MISSED APPROACH: Climb to 3200 direct PEYIC and hold.
<p> For uncompensated Baro-VNAV systems, LNAV/VNAV NA below -15°C or above 54°C. Rwy 32R helicopter visibility reduction below 3/4 SM NA.</p> <p> For inop ALS increase LPV all Cats visibility to 1 1/4 SM, LNAV/VNAV all Cats visibility to 1 3/8 SM and LNAV Cats A/B to 1 SM and Cats C/D visibility to 1 3/8 SM.</p>		

ATIS <b>124.175 283.0</b>	NORCAL APP CON <b>120.1 290.25</b>	MOFFETT TOWER* <b>119.55</b> (CTAF) <b>259.65</b>	GND CON <b>121.85 278.95</b>	CLNC DEL <b>296.75</b>
------------------------------	---------------------------------------	------------------------------------------------------	---------------------------------	---------------------------



 3200  NUNLE 2.2 NM to RW32R  EBIYI 2100  JULUD 3000  ORZOS 3600  RIROC 4400  AGAPE 5200  ZAPEP 5500  RW32R 780  GP 3.00° TCH 57	1.3	0.9	4.1 NM	2.9 NM	1.9 NM	2.5 NM	3.6 NM	3.7 NM
	CATEGORY	A		B		C		D
LPV DA	452-3/4		421 (500-3/4)					
LNAV/VNAV DA	493-1		462 (500-1)					
LNAV MDA	500-3/4		469 (500-3/4)		500-1		469 (500-1)	
CIRCLING	540-1		600-1		620-1 1/2		780-2 1/2	
	503 (600-1)		563 (600-1)		583 (600-1 1/2)		743 (800-2 1/2)	