

TACAN NUQ Chan 123 (117.6)	APP CRS 321°	Rwy ldg TDZE Apt Elev	7521 36 37
--	------------------------	-----------------------------	---------------------------------------

TACAN RWY 32L

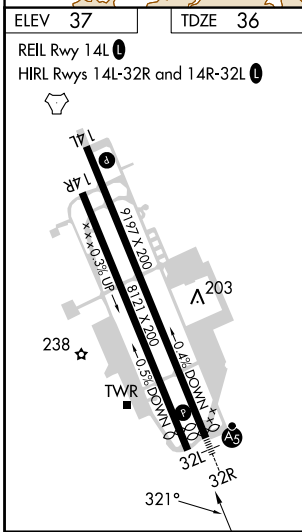
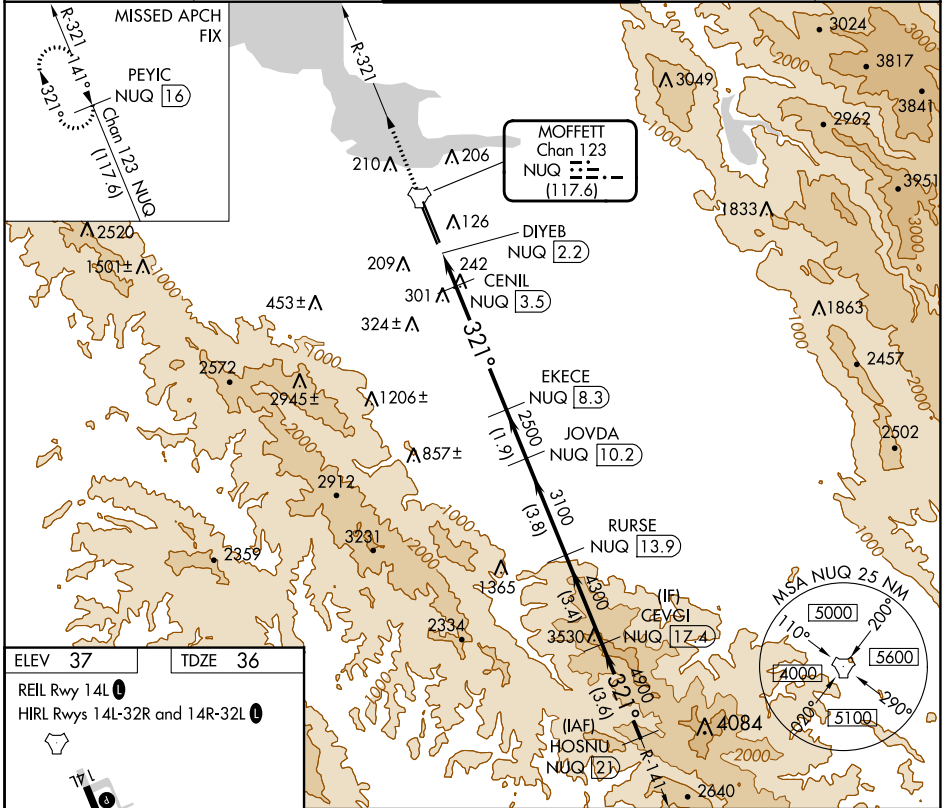
MOFFETT FEDERAL AIRFIELD (NUQ)

RADAR required for procedure entry.

⚠ Rwy 32L helicopter visibility reduction below ¾ SM NA.

MISSED APPROACH: Climb to 3200 on NUQ TACAN R-321 to PEYIC/16 DME and hold.

ATIS 124.175 283.0	NORCAL APP CON 120.1 290.25	MOFFETT TOWER ★ 119.55 (CTAF) 259.65	GND CON 121.85 278.95	CLNC DEL 296.75
------------------------------	---------------------------------------	--	---------------------------------	---------------------------



ELEV 37	TDZE 36						
REIL Rwy 14L	HIRL Rws 14L-32R and 14R-32L						
3200	PEYIC NUQ 16	CENIL NUQ 3.5	EKECE NUQ 8.3	JOVDA NUQ 10.2	RURSE NUQ 13.9	CEVGI NUQ 17.4	HOSNU NUQ 21
720	DIYEB NUQ 2.2	3.45° TCH 55	3100	4300	4900	5500	
0.5	0.8	0.5	4.8 NM	1.9 NM	3.8 NM	3.4 NM	3.6 NM
CATEGORY	A	B	C	D	E		
S-32L	560-1	524 (600-1)	560-1½		524 (600-1½)		
CIRCLING	560-1	600-1	620-1½	780-2½	940-3		
	523 (600-1)	563 (600-1)	583 (600-1½)	743 (800-2½)	903 (1000-3)		

SW-2, 26 DEC 2024 to 23 JAN 2025

SW-2, 26 DEC 2024 to 23 JAN 2025