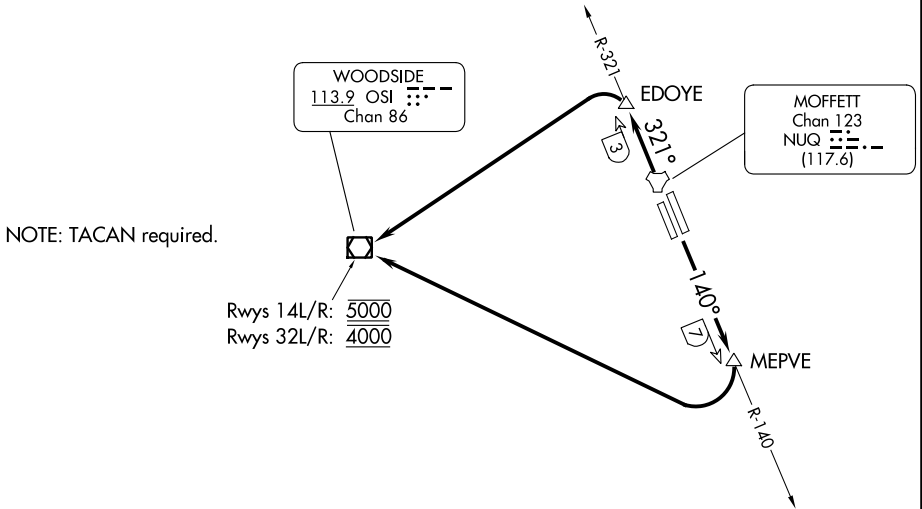


# WOODSIDE TWO DEPARTURE

ATIS  
 124.175 283.0  
 CLNC DEL  
 296.75  
 GND CON  
 121.85 278.95  
 MOFFETT TOWER★  
 119.55 (CTAF) 259.65  
 NORCAL DEP CON  
 121.3 270.35

**TOP ALTITUDE:  
ASSIGNED BY ATC**



SW-2, 26 DEC 2024 to 23 JAN 2025

SW-2, 26 DEC 2024 to 23 JAN 2025

### TAKEOFF MINIMUMS

Rwy 14L/R: Standard with minimum climb of 402' per NM to 5000.  
 Rwy 32R: Standard with minimum climb of 250' per NM to 4000.  
 Rwy 32L: Standard with minimum climb of 246' per NM to 4000.

NOTE: Chart not to scale.



### DEPARTURE ROUTE DESCRIPTION

TAKEOFF RUNWAYS 14L/R: Climb via NUQ R-140 to MEPVE/NUQ 7 DME, then right turn direct to cross OSI VOR/DME at 5000, thence . . . .

TAKEOFF RUNWAYS 32L/R: Climb via NUQ R-321 to EDOYE/NUQ 3 DME, then turn left direct to cross OSI VOR/DME at 4000, thence . . . .

. . . . via RADAR vectors or assigned route.

# WOODSIDE TWO DEPARTURE