

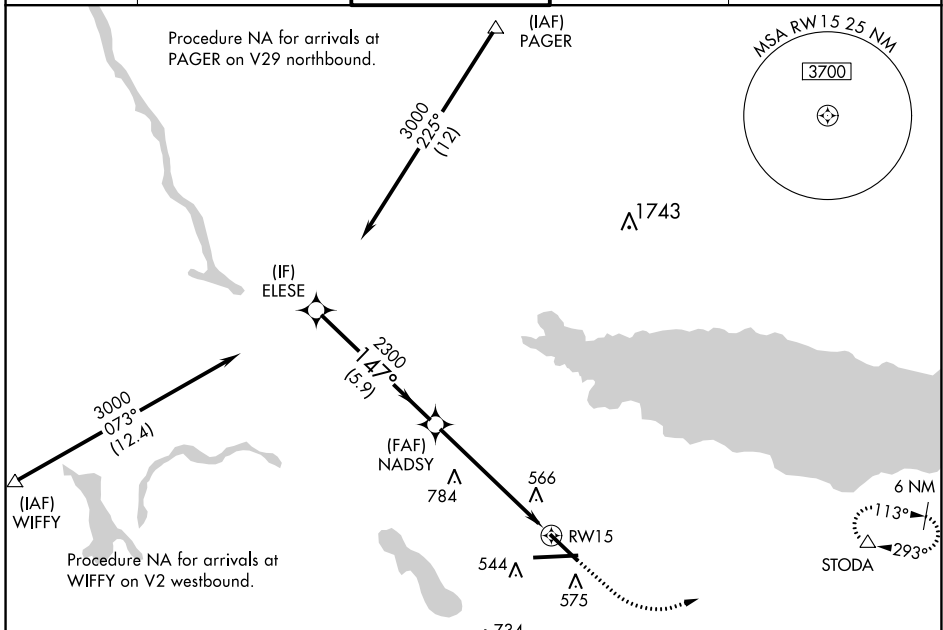
WAAS CH 50117 W15A	APP CRS 147°	Rwy Idg TDZE Apt Elev	7500 417 421
--	------------------------	-----------------------------	---

RNAV (GPS) RWY 15

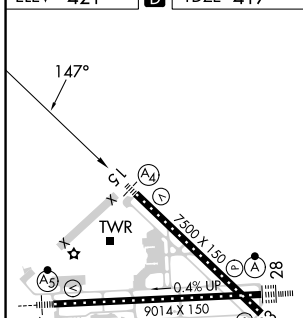
SYRACUSE HANCOCK INTL (SYR)

RNP APCH.		MALS	MISSED APPROACH: Climb to 1600 then climbing left turn to 3200 direct STODA and hold, continue climb-in-hold to 3200.
▼ Rwy 15 helicopter visibility reduction below 3/4 SM NA. ▲ Inop table does not apply to LPV DA all Cats. For uncompensated Baro-VNAV systems, LNAV/VNAV NA below -19°C or above 54°C.			

ATIS 124.225	SYRACUSE APP CON 126.125 269.125	SYRACUSE TOWER 120.3 239.0	GND CON 121.7 348.6	CLNC DEL 125.05 257.775
------------------------	--	--------------------------------------	-------------------------------	-----------------------------------



ELEV 421	D	TDZE 417
----------	----------	----------



GP 3.00° TCH 53	5.9 NM	4.5 NM	1.3 NM
CATEGORY	A	B	C
LPV DA	667-3/4 250 (300-3/4)		
LNAV/VNAV DA	894-1/8 477 (500-1/8)		
LNAV MDA	880-3/4 463 (500-3/4)		880-1/8 463 (500-1/8)
C CIRCLING	900-1 479 (500-1)	920-1 499 (500-1)	1020-1 1/2 599 (600-1 1/2)
			1180-2 1/2 759 (800-2 1/2)

SYRACUSE, NEW YORK
Amdt 2 30JAN20

43°07'N-76°06'W

SYRACUSE HANCOCK INTL (SYR)
RNAV (GPS) RWY 15

NE-2, 26 DEC 2024 to 23 JAN 2025

NE-2, 26 DEC 2024 to 23 JAN 2025