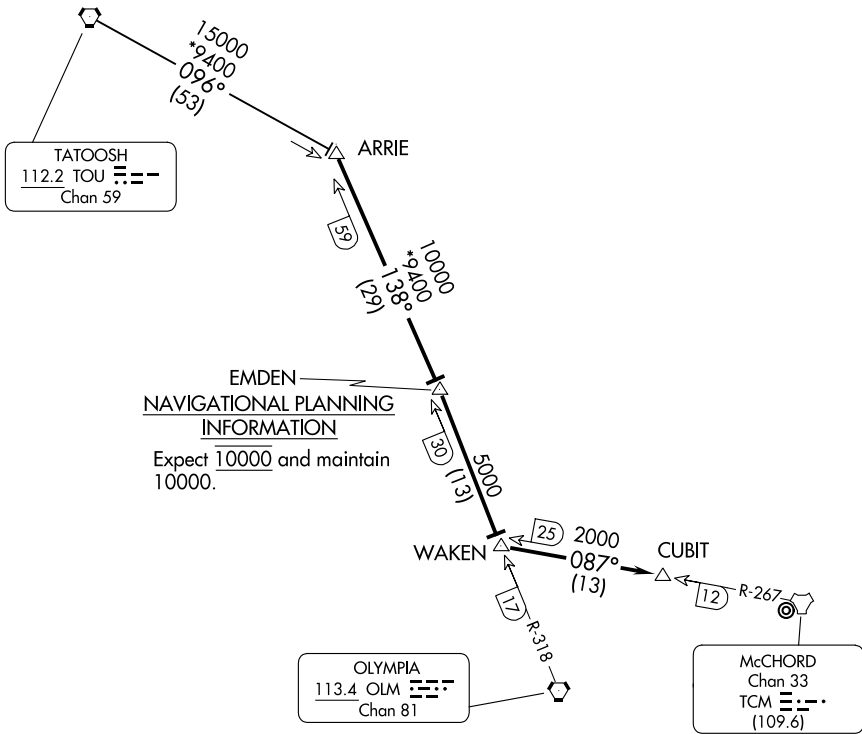


ARRIE NINE ARRIVAL

SEATTLE APP CON
126.5 377.15
D-ATIS
135.825 270.1

DME required.
RADAR required.



NW-1, 26 DEC 2024 to 23 JAN 2025

NW-1, 26 DEC 2024 to 23 JAN 2025

NOTE: DOD use only.

NOTE: Chart not to scale.

ARRIVAL ROUTE DESCRIPTION

TATOOSH TRANSITION (TOU.ARRIE9): From over TOU VORTAC on TOU R-096 to ARRIE. Thence. . . .

. . . .From over ARRIE on OLM R-318 and TCM R-267 to CUBIT, expect RADAR vectors to final approach course.

LOST COMMUNICATIONS: Proceed direct to TCM TACAN.