

TACOMA, WASHINGTON

ILS or LOC RWY 16

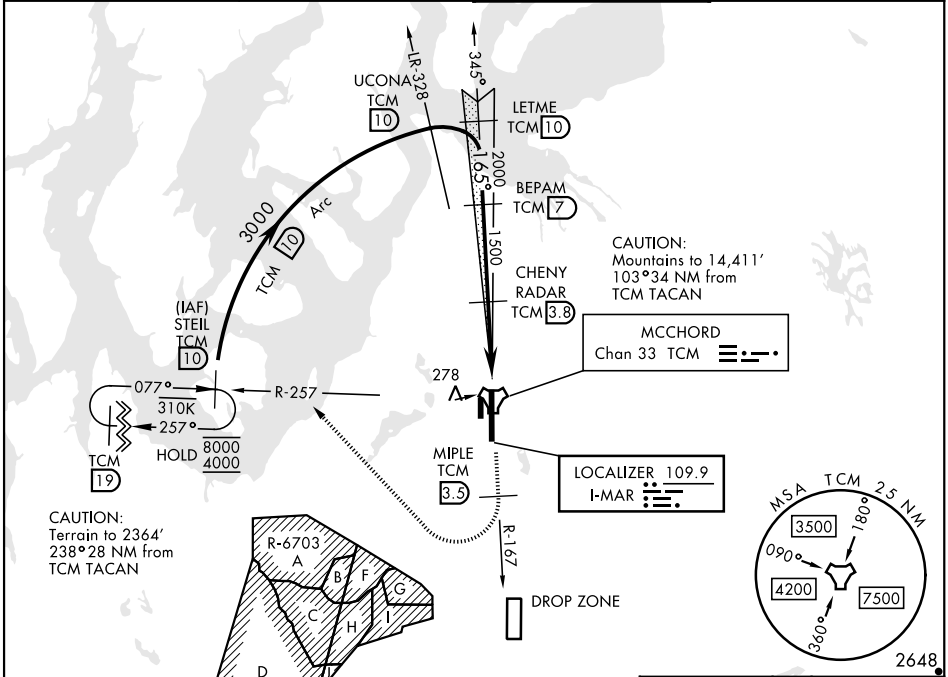
LOC I-MAR 109.9	APCH CRS 165°	Rwy Ildg 10,108 TDZE 286 Arprt Elev 322
---------------------------	-------------------------	--

AL-414 [USAF]

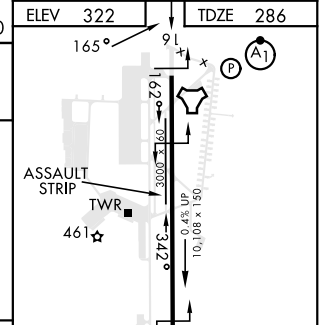
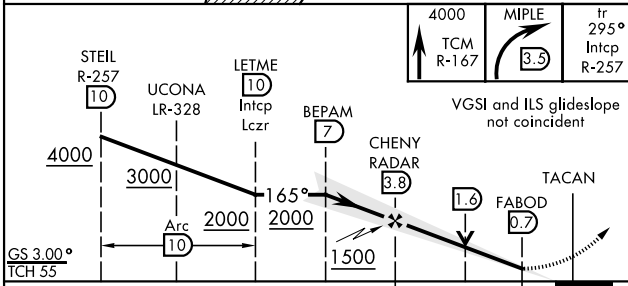
MCCHORD FLD (KTCM)

RADAR or DME required.	ALSIF-1 (A1)	MISSED APPROACH: Climb to 4000 on TCM TACAN R-167. At 3.5 DME turn right via 295° course to intercept TCM R-257 to STEL and hold. Continue climb in hold to 4000.
------------------------	------------------------	---

ATIS 135.825 270.1	SEATTLE APP CON 126.5 377.15	TOWER 124.8 259.3	GND CON 118.175 279.65
------------------------------	--	-----------------------------	----------------------------------



EMERG SAFE ALT 100 NM 16,600



CATEGORY	A	B	C	D	E
S-ILS 16*	601/40		315	(300-¾)	
S-LOC 16**	860/40	574 (600-¾)	860-1¼	574	(600-1¼)
*** CIRCLING	940-1	618 (700-1)	940-1¾ 618 (700-1¾)	940-2 618 (700-2)	1020-2½ 698 (700-2½)

FAF to MAP 3.1 NM					
Knots	60	90	120	150	180
Min:Sec	3:06	2:04	1:33	1:14	1:02

TACOMA, WASHINGTON
Amdt 5 20APR23

47°08'N-122°29'W

MCCHORD FLD (KTCM)

ILS or LOC RWY 16

NW-1, 26 DEC 2024 to 23 JAN 2025

NW-1, 26 DEC 2024 to 23 JAN 2025