

TACOMA, WASHINGTON

23110

# RNAV (GPS) RWY 16

APCH CRS **165°**  
 Rwy ldg **10,108**  
 TDZE **286**  
 Arpt Elev **322**

AL-414 [USAF]

MCCHORD FLD (KTCM)

RADAR required.



MISSED APPROACH: Climb to 4000 direct JODOR and hold. Continue climb in hold to 4000.

▼ \* When ALS inop, increase CAT AB vis to 1 mile, CAT CDE vis to 1 3/8 miles.  
 \*\* Circling not authorized E of rwy 16-34.

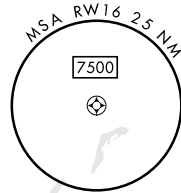
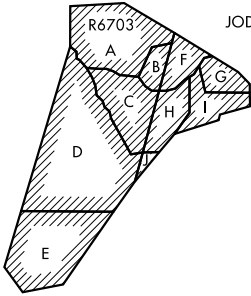
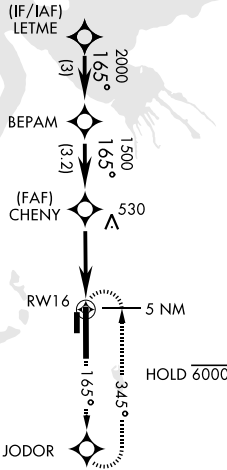
ATIS  
**135.825 270.1**

SEATTLE APP CON  
**126.5 377.15**

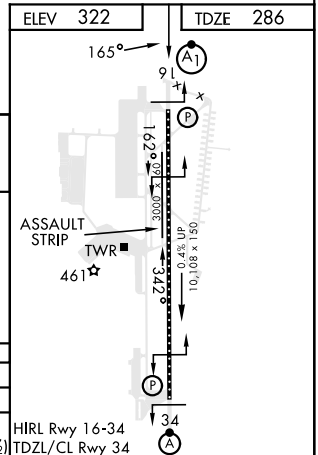
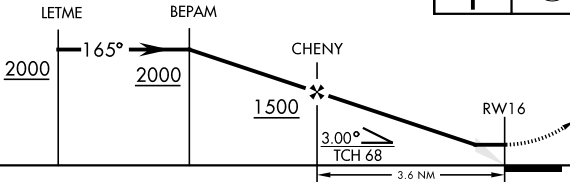
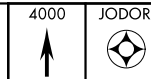
TOWER  
**124.8 259.3**

GND CON  
**118.175 279.65**

DME/DME RNP-0.3 NA



EMERG SAFE ALT 100 NM 16,600



CATEGORY	A	B	C	D	E
LNVA MDA *	780/24	494 (500-1/2)	780/50	494 (500-1)	
** CIRCLING	940-1	618 (700-1)	940-1 3/4 618 (700-1 3/4)	940-2 618 (700-2)	1020-2 1/2 698 (700-2 1/2)

HIRL Rwy 16-34  
 TDZL/CL Rwy 34

TACOMA, WASHINGTON

47°08'N-122°29'W

MCCHORD FLD (KTCM)

Amdt 4 20APR23

# RNAV (GPS) RWY 16

NW-1, 26 DEC 2024 to 23 JAN 2025

NW-1, 26 DEC 2024 to 23 JAN 2025