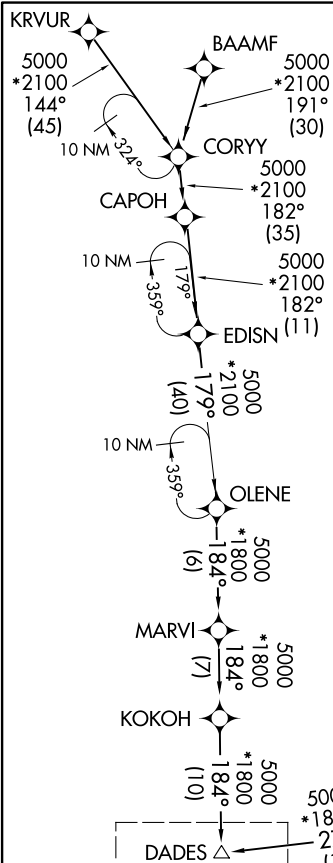


DADES ONE ARRIVAL (RNAV)
(DADES.DADES1) 03NOV22

Transition Routes

TAMPA, FLORIDA



DADES Δ
See following page for arrival routes.

(NARRATIVE ON FOLLOWING PAGE)
(CONTINUED ON FOLLOWING PAGE)

RNAV 1 - DME/DME/IRU or GPS.
RADAR required.

NOTE: Jet and turboprop aircraft only.
NOTE: Do not file KRVUR, EDISN, BEAUX and NICCK
Transitions - To be assigned by ATC.

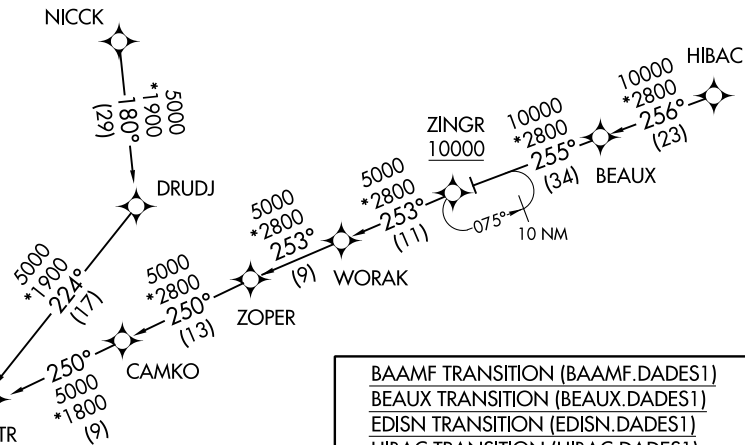


TAMPA APP CON
135.5 279.6
KMCF ATIS
133.825 270.1
PIE ATIS
134.5
TPA D-ATIS
126.45
VDF AWOS-3
121.125

(DADES.DADES1) 23110
DADES ONE ARRIVAL (RNAV)

Transition Routes

TAMPA, FLORIDA



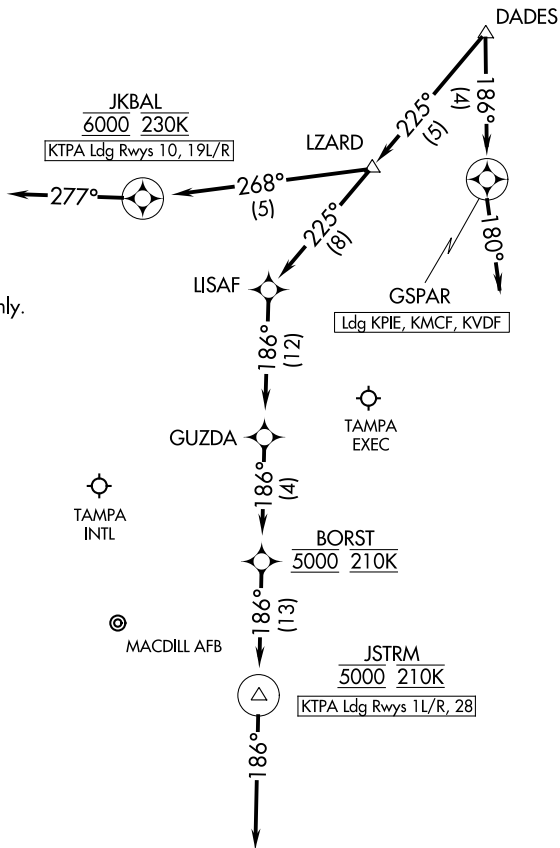
BAAMF TRANSITION (BAAMF.DADES1)
BEAUX TRANSITION (BEAUX.DADES1)
EDISN TRANSITION (EDISN.DADES1)
HIBAC TRANSITION (HIBAC.DADES1)
KRVUR TRANSITION (KRVUR.DADES1)
NICCK TRANSITION (NICCK.DADES1)

NOTE: Chart not to scale.

TAMPA APP CON
135.5 279.6
KMCF ATIS
133.825 270.1
PIE ATIS
134.5
TPA D-ATIS
126.45
VDF AWOS-3
121.125

RNAV 1- DME/DME/IRU or GPS.

RADAR required.



NOTE: Jet and turboprop aircraft only.

NOTE: Chart not to scale.

ARRIVAL ROUTE DESCRIPTION

LANDING KTPA RUNWAYS 1L/R, 28: From DADES on track 225° to LZARD, then on track 225° to LISAF, then on track 186° to GUZDA, then on track 186° to cross BORST at 5000 and at 210K, then on track 186° to cross JSTRM at 5000 and at 210K, then on track 186°.
Expect RADAR vectors to final approach course.

LANDING KTPA RUNWAYS 10, 19L/R: From DADES on track 225° to LZARD, then on track 268° to cross JKBAL at 6000 and at 230K, then on track 277°.
Expect RADAR vectors to final approach course.

LANDING KPIE/KMCF/KVDF: From DADES on track 186° to GSPAR, then on track 180°.
Expect RADAR vectors to final approach course.