

TAMPA, FLORIDA

AL-416 (FAA)

24305

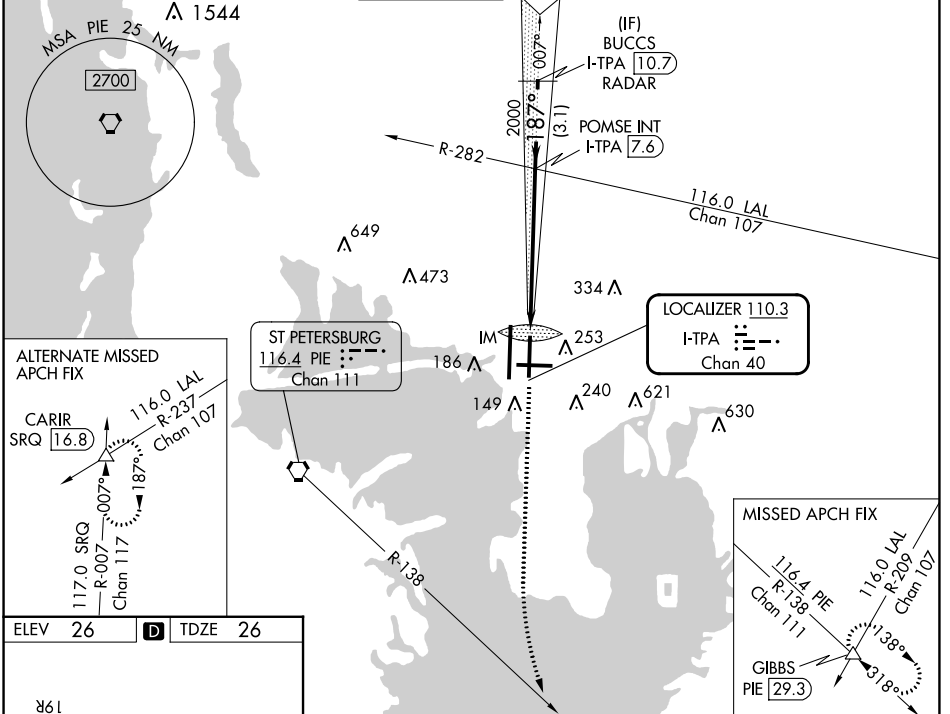
LOC/DME I-TPA <b>110.3</b> Chan <b>40</b>	APP CRS <b>187°</b>	Rwy Idg <b>8300</b> TDZE <b>26</b> Apt Elev <b>26</b>
---	------------------------	---

# ILS RWY 19L (CAT II)

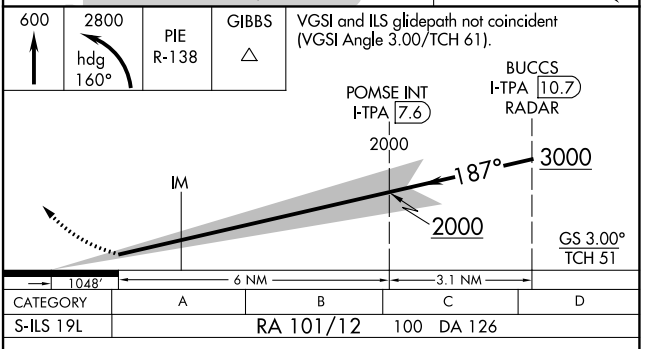
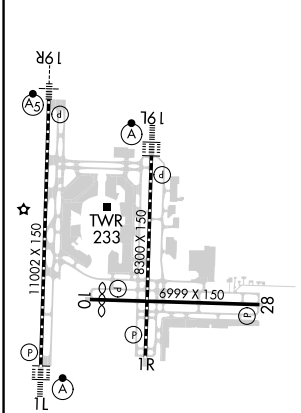
TAMPA INTL (TPA)

<b>RADAR required for procedure entry.</b> Simultaneous approach authorized. RVR 1000 authorized with specific OPSPEC, MSPEC, or LOA approval and use of autoland or HUD to touchdown.		ALSF-2 	<b>MISSED APPROACH:</b> Climb to 600 then climbing left turn to 2800 on heading 160° and on PIE VORTAC R-138 to GIBBS INT/PIE 29.3 DME and hold.
--	--	------------	--

ARR <b>126.45</b>	D-ATIS <b>128.475</b>	DEP <b>118.5</b>	TAMPA APP CON <b>307.175</b>	<b>TAMPA TOWER</b> <b>119.5 269.4</b>	GND CON <b>121.7 269.4</b>	CLNC DEL <b>133.6</b>	CPDLC
----------------------	--------------------------	---------------------	---------------------------------	--	-------------------------------	--------------------------	-------



ELEV 26	<b>D</b>	TDZE 26
---------	----------	---------



**CATEGORY II ILS - SPECIAL AIRCREW & AIRCRAFT CERTIFICATION REQUIRED**

REIL Rwy 1R  
 TDZ/CL Rwy 1L and 19L  
 HIRL Rwy 1L-19L, 1R-19L, and 10-28

TAMPA, FLORIDA  
 Adnt 41 20APR23

27°59'N-82°32'W

TAMPA INTL (TPA)

**ILS RWY 19L (CAT II)**

SE-3, 26 DEC 2024 to 23 JAN 2025

SE-3, 26 DEC 2024 to 23 JAN 2025