

TAMPA, FLORIDA

AL-416 (FAA)

24305

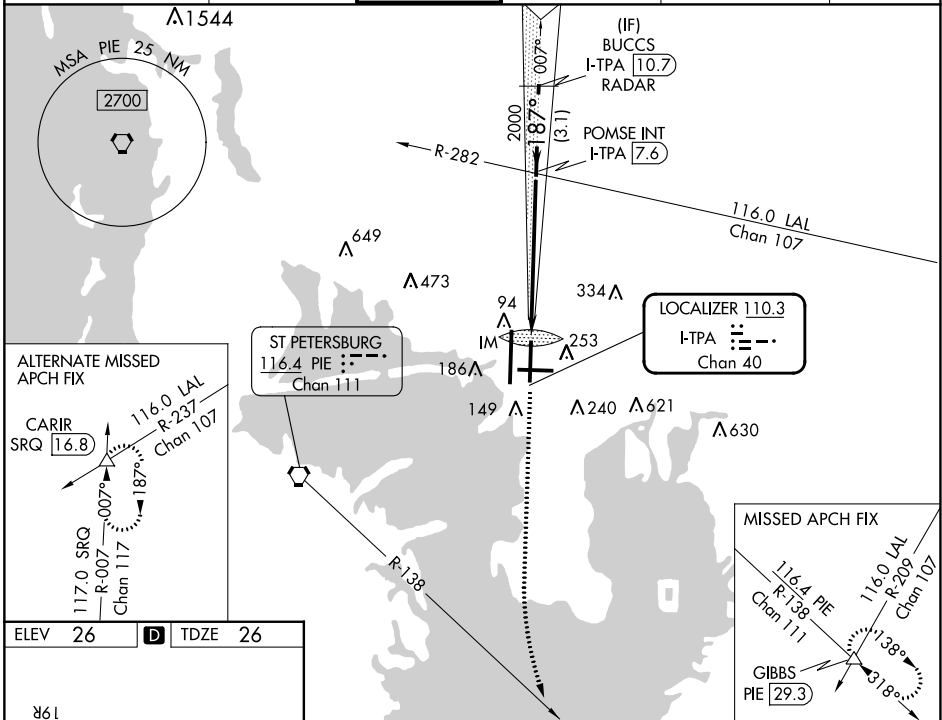
LOC/DME I-TPA <b>110.3</b> Chan <b>40</b>	APP CRS <b>187°</b>	Rwy Idg <b>8300</b> TDZE <b>26</b> Apt Elev <b>26</b>
---	------------------------	---

# ILS RWY 19L (SA CAT I)

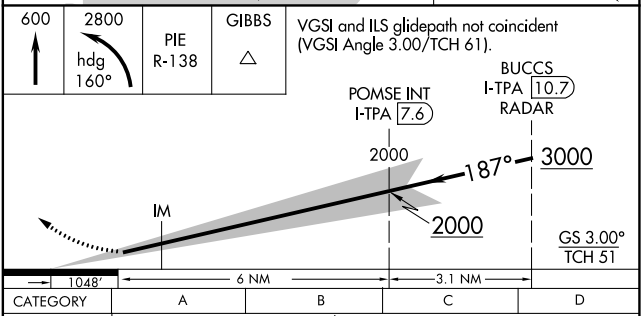
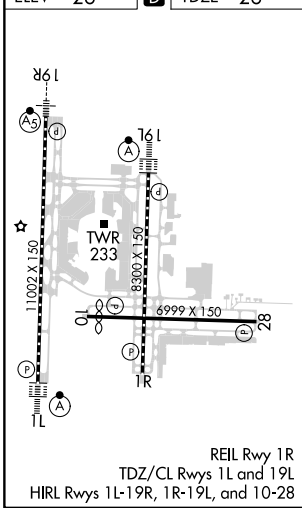
TAMPA INTL (TPA)

RADAR required for procedure entry.		ALS-F-2 	MISSED APPROACH: Climb to 600 then climbing left turn to 2800 on heading 160° and on PIE VORTAC R-138 to GIBBS INT/PIE 29.3 DME and hold.
Simultaneous approach authorized. Requires specific OPSPEC, MSPEC, or LOA approval.			

ARR <b>126.45</b>	D-ATIS <b>128.475</b>	DEP <b>118.5</b>	TAMPA APP CON <b>307.175</b>	TAMPA TOWER <b>119.5 269.4</b>	GND CON <b>121.7 269.4</b>	CLNC DEL <b>133.6</b>	CPDLC
----------------------	--------------------------	---------------------	---------------------------------	-----------------------------------	-------------------------------	--------------------------	-------



ELEV 26	<b>D</b>	TDZE 26
---------	----------	---------



CATEGORY	A	B	C	D
S-ILS 19L	RA 150/14		150	DA 176

**SA CATEGORY I ILS- SPECIAL AIRCREW & AIRCRAFT CERTIFICATION REQUIRED**

SE-3, 26 DEC 2024 to 23 JAN 2025

SE-3, 26 DEC 2024 to 23 JAN 2025

TAMPA, FLORIDA  
Amdt 41 20APR23

27°59'N-82°32'W

TAMPA INTL (TPA)  
**ILS RWY 19L (SA CAT I)**