

WAAS CH 50406 W01A	APP CRS 007°	Rwy Idg 10800 TDZE 11 Apt Elev 26
---------------------------------	------------------------	--

RNAV (GPS) RWY 1L

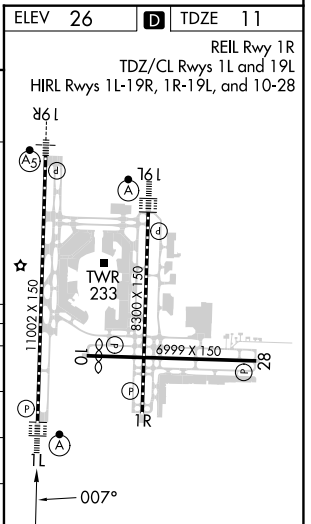
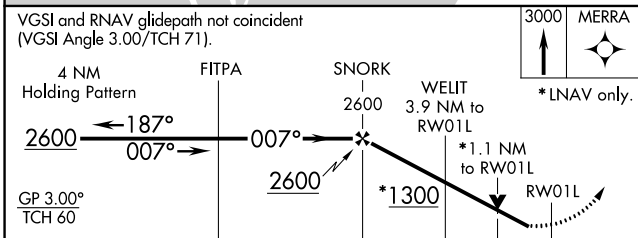
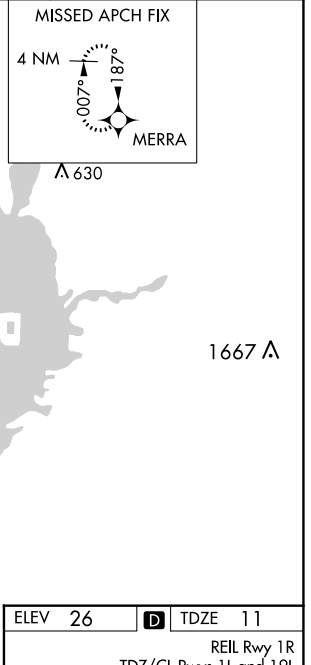
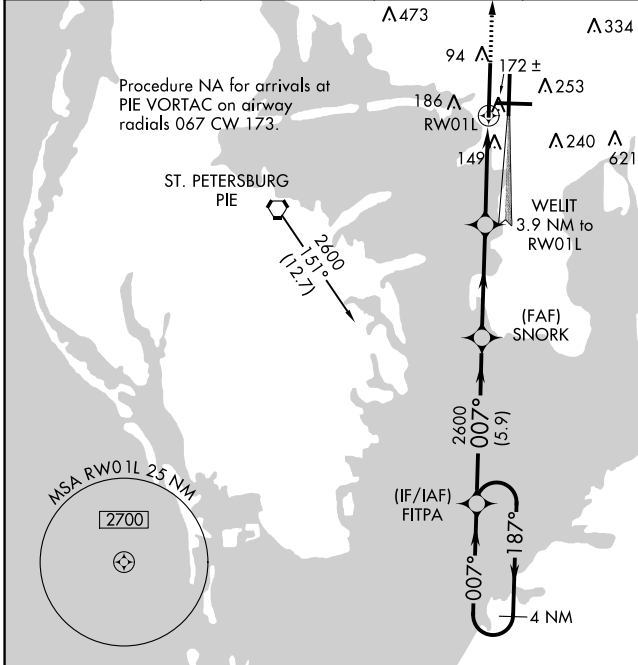
TAMPA INTL (TPA)

⚠ For uncompensated Baro-VNAV systems, LNAV/VNAV NA below -15°C (5°F) or above 43°C (109°F). DME/DME RNP-0.3 NA. For inop ALSF, increase LPV Cat E visibility to RVR 4000, LNAV/VNAV Cat E visibility to 1 3/8 mile, and LNAV Cat E visibility to RVR 6000. Simultaneous approach authorized with Rwy 1R. LNAV procedure NA during simultaneous operations. Use of FD or AP providing RNAV track guidance required during simultaneous operations.

ALSF-2
ⓐ

MISSED APPROACH:
Climb to 3000 direct MERRA and hold.

ARR	D-ATIS	DEP	TAMPA APP CON	TAMPA TOWER	GND CON	CLNC DEL	CPDLC
126.45		128.475	118.5 307.175	119.5 269.4	121.7 269.4	133.6	



CATEGORY	A	B	C	D	E
LPV DA	211/18		200 (200-1/2)		
LNAV/VNAV DA	431/45		420 (500-7/8)		
LNAV MDA	440/24	429 (500-1/2)		440/40	429 (500-3/4)
C CIRCLING	560-1	534 (600-1)		680-1 3/4 654 (700-13/4)	980-3 954 (1000-3)

SE-3, 26 DEC 2024 to 23 JAN 2025

SE-3, 26 DEC 2024 to 23 JAN 2025