

RAYZZ TWO ARRIVAL (RNAV)  
(RAYZZ.RAYZZ2) 02DEC21

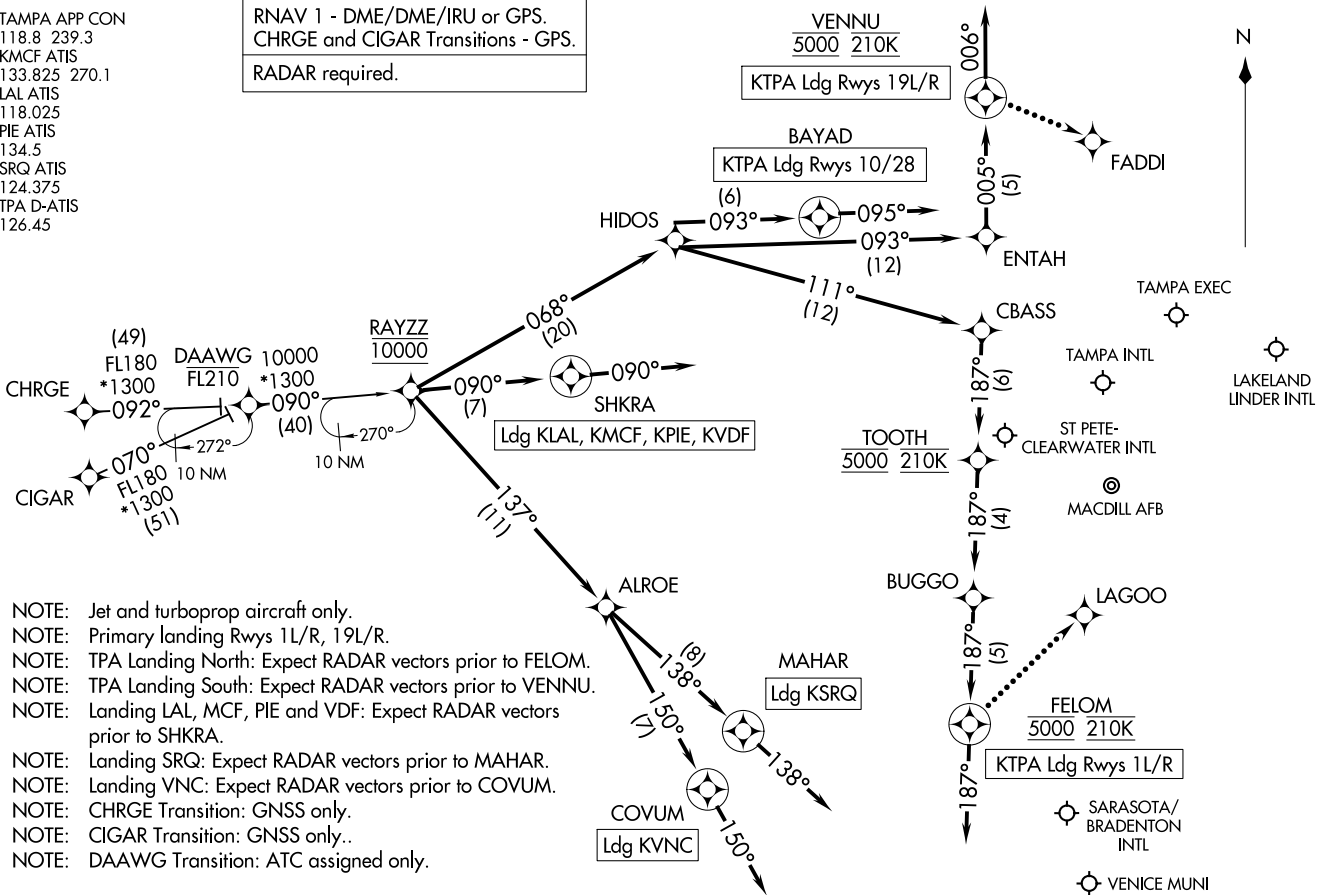
RAYZZ TWO ARRIVAL (RNAV)  
23054

AL-416 (FAA)

TAMPA, FLORIDA

TAMPA APP CON  
118.8 239.3  
KMCF ATIS  
133.825 270.1  
LAL ATIS  
118.025  
PIE ATIS  
134.5  
SRQ ATIS  
124.375  
TPA D-ATIS  
126.45

RNAV 1 - DME/DME/IRU or GPS.  
CHRG and CIGAR Transitions - GPS.  
RADAR required.



- NOTE: Jet and turboprop aircraft only.  
 NOTE: Primary landing Rwy's 1L/R, 19L/R.  
 NOTE: TPA Landing North: Expect RADAR vectors prior to FELOM.  
 NOTE: TPA Landing South: Expect RADAR vectors prior to VENNU.  
 NOTE: Landing LAL, MCF, PIE and VDF: Expect RADAR vectors prior to SHKRA.  
 NOTE: Landing SRQ: Expect RADAR vectors prior to MAHAR.  
 NOTE: Landing VNC: Expect RADAR vectors prior to COVUM.  
 NOTE: CHRG Transition: GNSS only.  
 NOTE: CIGAR Transition: GNSS only..  
 NOTE: DAAWG Transition: ATC assigned only.

(NARRATIVE ON FOLLOWING PAGE)

NOTE: Chart not to scale.

TAMPA, FLORIDA

ARRIVAL ROUTE DESCRIPTION

CHRG TRANSITION (CHRG.RAYZZ2)

CIGAR TRANSITION (CIGAR.RAYZZ2)

DAAWG TRANSITION (DAAWG.RAYZZ2)

KTPA:

From RAYZZ on track 068° to HIDOS.

LANDING KTPA RUNWAYS 1L/R: From HIDOS on track 111° to CBASS, then on track 187° to cross TOOTH at 5000 and at 210K, then on track 187° to BUGGO, then on track 187° to cross FELOM at 5000 and at 210K, then on track 187°. Expect RADAR vectors to final approach course.

LANDING KTPA RUNWAYS 10, 28: From HIDOS on track 093° to BAYAD, then on heading 095° or as assigned by ATC. Expect RADAR vectors to final approach course.

LANDING KTPA RUNWAYS 19L/R: From HIDOS on track 093° to ENTAH, then on track 005° to cross VENNU at 5000 and at 210K, then on track 006°. Expect RADAR vectors to final approach course.

LANDING KPJE/KMCF/KVDF/KLAL: From RAYZZ on track 090° to SHKRA, then on track 090°. Expect RADAR vectors to final approach course.

LANDING KSRQ: From RAYZZ on track 137° to ALROE, then on track 138° to MAHAR, then on track 138°. Expect RADAR vectors to final approach course.

LANDING KVNC: From RAYZZ on track 137° to ALROE, then on track 150° to COVUM, then on track 150°. Expect RADAR vectors to final approach course.

LOST COMMUNICATIONS

KTPA LANDING NORTH: Continue track to FELOM, proceed direct LAGOO, conduct Rwy 1L approach.

KTPA LANDING SOUTH: Continue track to VENNU, proceed direct FADDI, conduct Rwy 19R approach.

SE-3, 26 DEC 2024 to 23 JAN 2025

SE-3, 26 DEC 2024 to 23 JAN 2025