

WAAS Ch 87099 W13A	APP CRS 130°	Rwy Idg 4559 TDZE 388 Apt Elev 390
----------------------------------------	------------------------	---------------------------------------------------------------

RNAV (GPS) RWY 13

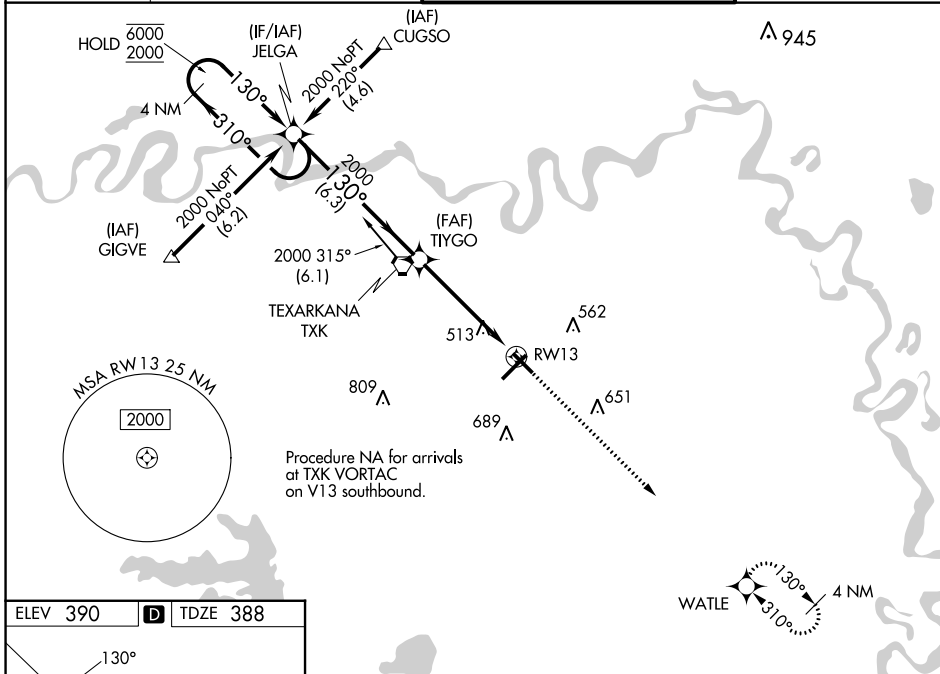
TEXARKANA RGNL-WEBB FLD (TXK)

RNP APCH - GPS.

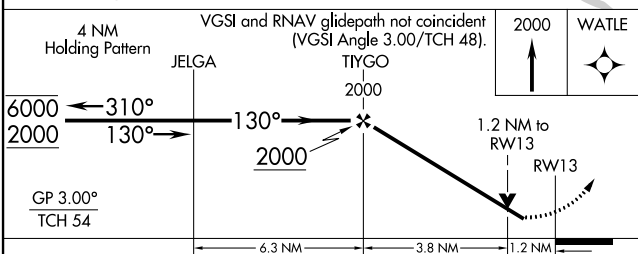
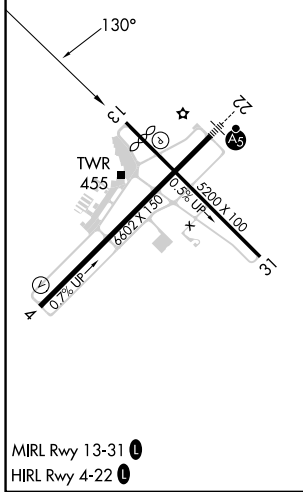
⚠ Baro-VNAV and VDP NA when using De Queen altimeter setting. Rwy 13 helicopter visibility reduction below $\frac{3}{4}$ SM NA. For uncompensated Baro-VNAV systems, LNAV/VNAV NA below -1.5°C or above 54°C . When local altimeter setting not received, use De Queen altimeter setting and increase LPV DA to 748 feet and all Cats visibility $\frac{1}{4}$ SM, LNAV/VNAV DA to 868 feet all Cats visibility $\frac{3}{8}$ SM, and all MDAs 100 feet and LNAV and Circling Cats C/D visibility $\frac{1}{4}$ SM.

MISSED APPROACH:
Climb to 2000 direct WATLE and hold.

ATIS 120.2	FORT WORTH CENTER 123.925 269.475	TEXARKANA TOWER* 123.875 (CTAF) 235.625	GND CON 119.225
----------------------	---------------------------------------------	----------------------------------------------------------	---------------------------



ELEV 390	D	TDZE 388
----------	----------	----------



CATEGORY	A	B	C	D
LPV DA		648- $\frac{3}{4}$	260 (300- $\frac{3}{4}$)	
LNAV/VNAV DA		768-1	380 (400-1)	
LNAV MDA	780-1	392 (400-1)	780- $\frac{1}{8}$	392 (400- $\frac{1}{8}$)
CIRCLING	820-1 430 (500-1)	900-1 510 (600-1)	1000- $\frac{1}{4}$ 610 (700- $\frac{1}{4}$)	1080- $\frac{1}{4}$ 690 (700- $\frac{1}{4}$)

SC-1, 26 DEC 2024 to 23 JAN 2025

SC-1, 26 DEC 2024 to 23 JAN 2025