

# HI-TACAN RWY 31

TACAN Chan <b>53</b>	APCH CRS <b>304°</b>	Rwy ldg <b>12,803</b> TDZE <b>1037</b> Arprt Elev <b>1078</b>
-------------------------	-------------------------	---

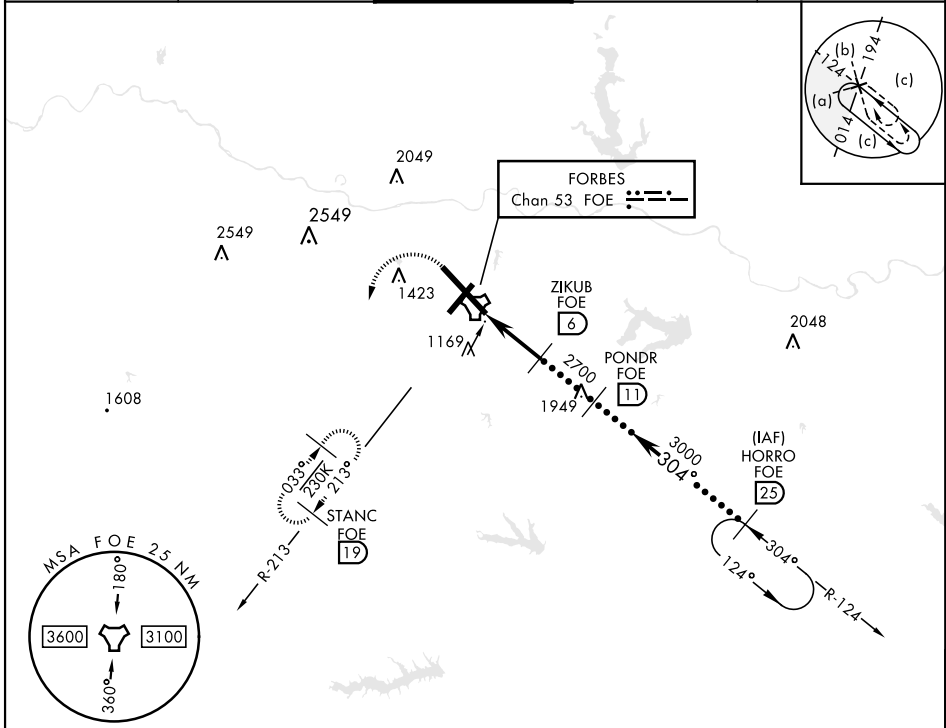
[USAF]

TOPEKA RGNL (KFOE)

\* When ALS inop, increase CAT CDE vis to 1 1/2 miles.
 

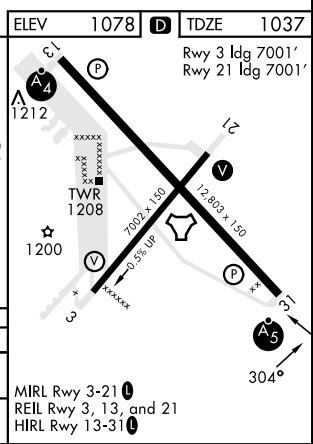

 MISSED APPROACH: Climbing left turn to 3000 via heading 190° and FOE TACAN R-213 to STANC/19° DME and hold.

ATIS <b>128.25</b>	KANSAS CITY CENTER <b>123.8 343.7</b>	FORBES TOWER ★ <b>120.8 (CTAF) 340.2</b>	GND CON <b>118.425 275.8</b>	UNICOM <b>122.95</b>
-----------------------	--	---	---------------------------------	-------------------------



EMERG SAFE ALT 100 NM 3600

3000 FOE R-213 STANC FOE 19 TACAN BUMKE 0.8 ZIKUB 6 PONDRA 11 HORRO 25 FL250 10,000 2.90° TCH 58 5.2 NM	CATEGORY: C, D, E S-31 * 1520/50 483 (500-1) CIRCLING: 1580-1 1/2 (600-1 1/2), 1700-2 (700-2), 1720-2 1/4 (700-2 1/4)		
--	---	--	--



# HI-TACAN RWY 31

NC-2, 26 DEC 2024 to 23 JAN 2025

NC-2, 26 DEC 2024 to 23 JAN 2025