

TACAN FOE Chan <b>53</b> <b>(111.6)</b>	APP CRS <b>304°</b>	Rwy Idg TDZE Apt Elev	<b>12803</b> <b>1037</b> <b>1078</b>
---	------------------------	-----------------------------	--

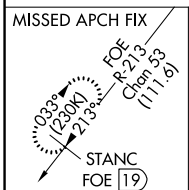
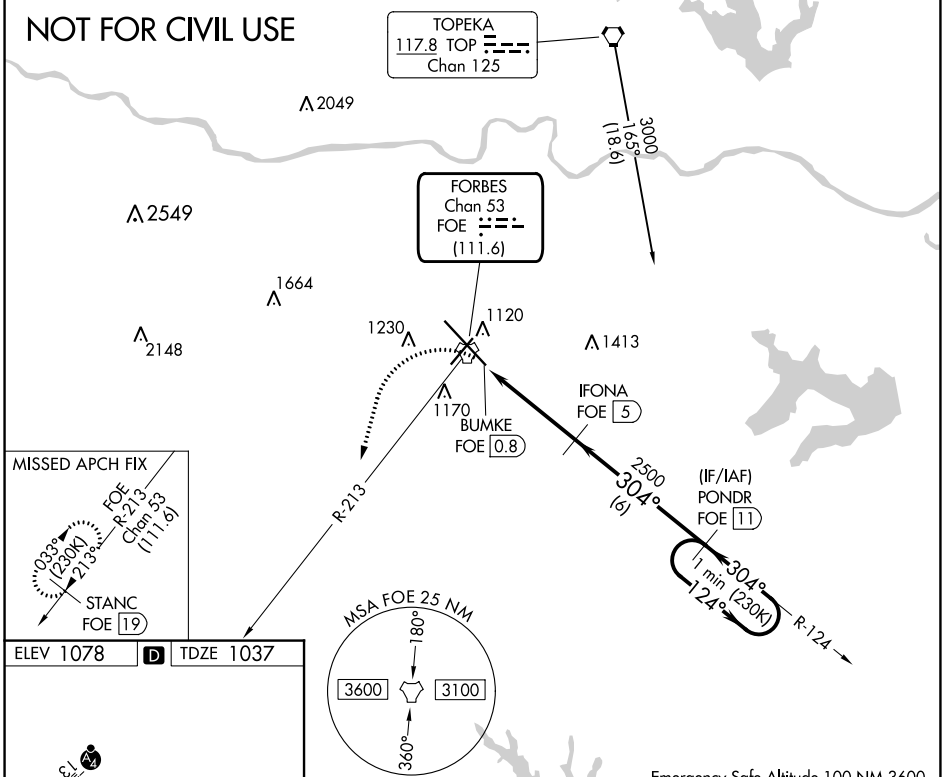
# TACAN RWY 31

TOPEKA RGNL (F'OE)

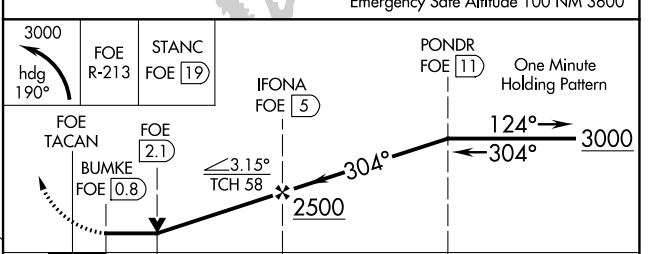
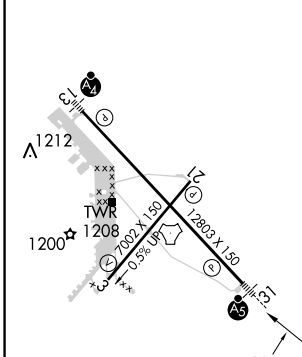
<b>NA</b> For inoperative ALS, increase S-31 Cats C/D/E visibility to 1 3/8 SM.	MALSR 	MISSED APPROACH: Climbing left turn to 3000 heading 190° and on FOE TACAN R-213 to STANC/19 DME and hold.
---	-----------	---

ATIS <b>128.25</b>	KANSAS CITY CENTER <b>123.8 343.7</b>	FORBES TOWER* <b>120.8 (CTAF) 340.2</b>	GND CON <b>118.425 275.8</b>	UNICOM <b>122.95</b>
-----------------------	--	--	---------------------------------	-------------------------

**NOT FOR CIVIL USE**



ELEV 1078	<b>D</b>	TDZE 1037
-----------	----------	-----------



CATEGORY	A	B	C	D	E
S-31	1500/24	463 (500-1/2)	1500/50	463 (500-1)	
<b>C</b> CIRCLING	1520-1 442 (500-1)	1580-1 502 (600-1)	1580-1 1/2 502 (600-1/2)	1700-2 622 (700-2)	1720-2 1/4 642 (700-2 1/4)

NC-2, 26 DEC 2024 to 23 JAN 2025

NC-2, 26 DEC 2024 to 23 JAN 2025