

APP CRS	Rwy Idg	4321
	TDZE	1519
096°	Apt Elev	1519

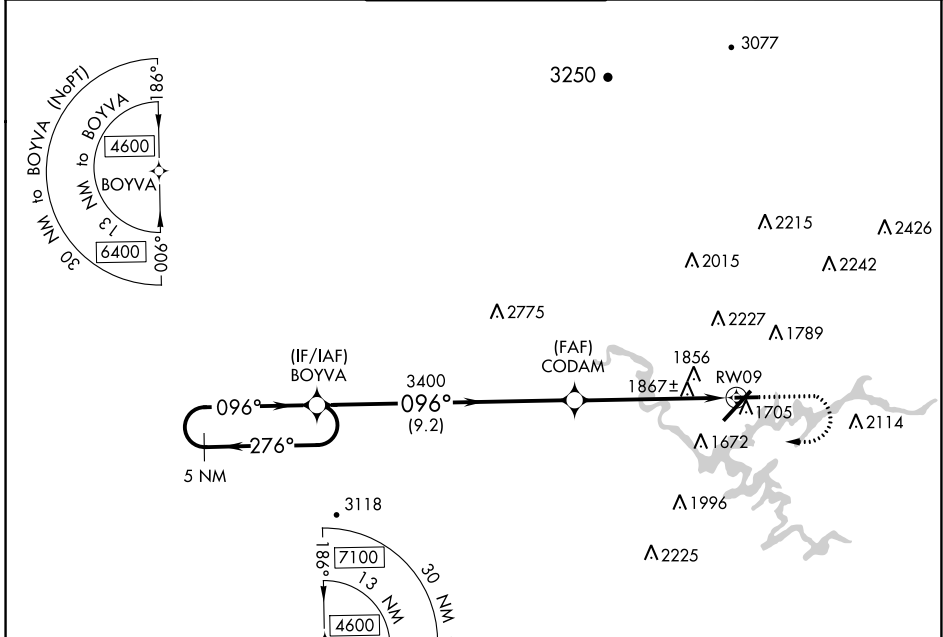
RNAV (GPS) RWY 9

TRI-CITIES (TRI)

⚠ Circling NA NW of Rws 9 and 23. Rwy 9 helicopter visibility reduction below 1 SM NA. DME/DME RNP-0.3 NA. Straight-in Rwy 9 NA at night, Circling Rwy 9 NA at night.

⚠ MISSED APPROACH: Climb to 2000 then climbing right turn to 4600 direct BOYVA and hold.

ATIS 118.25	TRI-CITY APP CON ★ 134.425 349.0	TRI-CITY TOWER ★ 119.5 (CTAF) 257.8	GND CON 121.7 348.6	UNICOM 122.95
-----------------------	--	---	-------------------------------	-------------------------

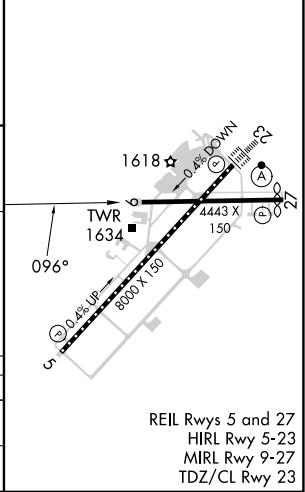


SE-1, 26 DEC 2024 to 23 JAN 2025

SE-1, 26 DEC 2024 to 23 JAN 2025

ELEV 1519	D TDZE 1519
-----------	--------------------

	5 NM Holding Pattern BOYVA		Visual Segment - Obstacles.		2000	4600	BOYVA
	4600 ← 276°		→ 096°		↑	↘	✧
			CODAM				
			3400				
			RW09				
	9.2 NM		5.8 NM				
CATEGORY	A	B	C	D			
LNAV MDA	2120-1	601 (700-1)	2120-1¾	601 (700-1¾)			
C CIRCLING	2120-1 601 (700-1)	2180-1 661 (700-1)	2300-2¼ 781 (800-2¼)	2500-3 981 (1000-3)			



REIL Rws 5 and 27
HIRL Rwy 5-23
MIRL Rwy 9-27
TDZ/CL Rwy 23